

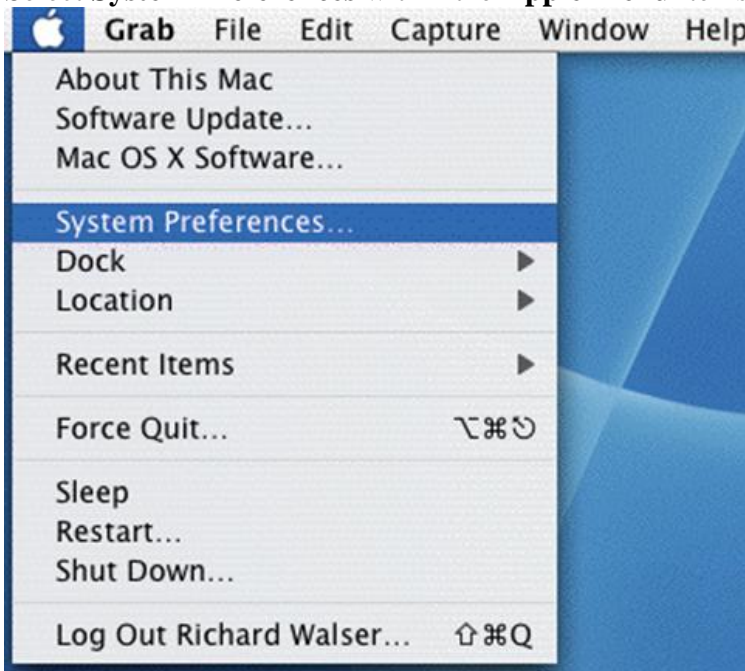


Connecting to the Network with MacOS 10.4

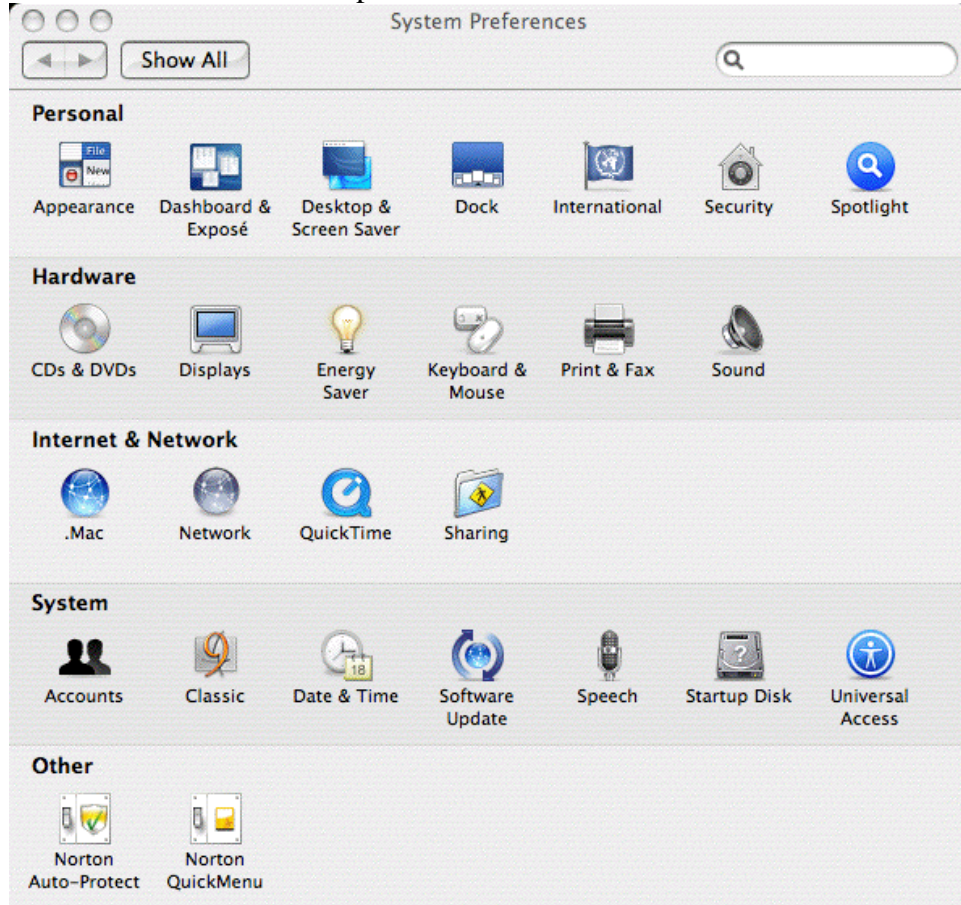
This document will help you connect a Mac OS 10 computer to the Yale network, and give you access to the Internet. These directions are intended to help you reconfigure a failed computer, not setup a new computer. If you need a new computer added to the network, please submit a Computing Request Form (CRF). You will need a valid IP address before continuing with these directions.

Note You may be prompted for an Administrator Password before making any changes to the system preferences.

Select **System Preferences** within the **Apple Menu** items.

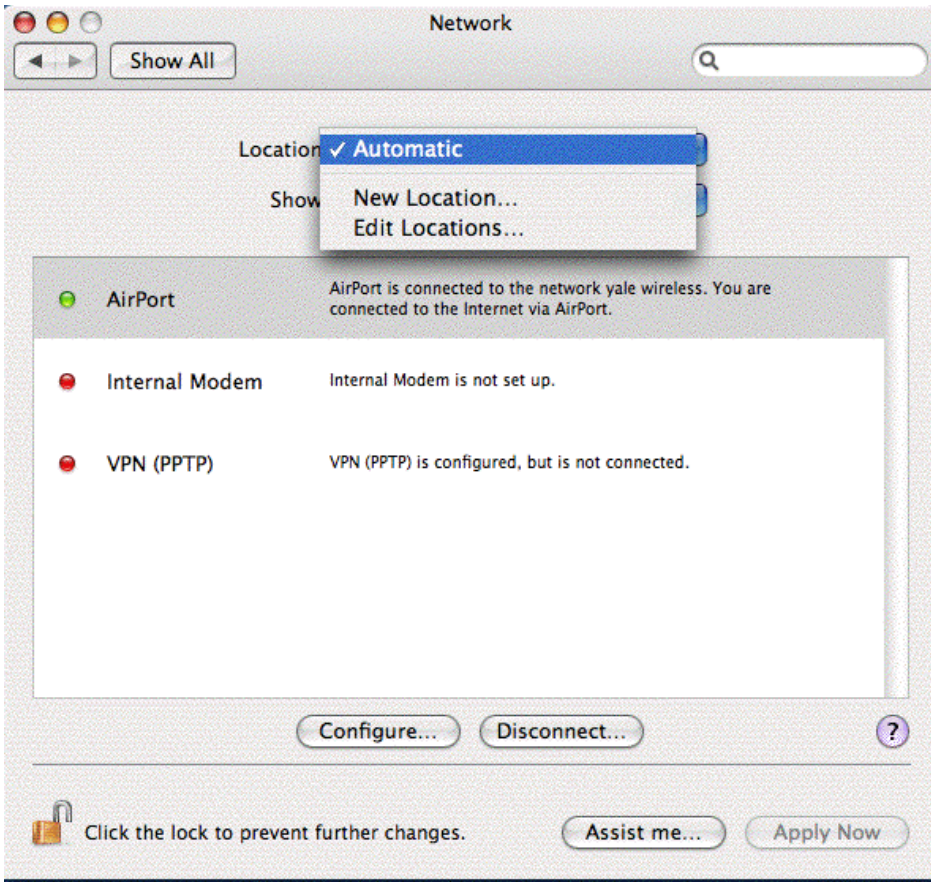


Select **Network** from the open **Control Panel** window

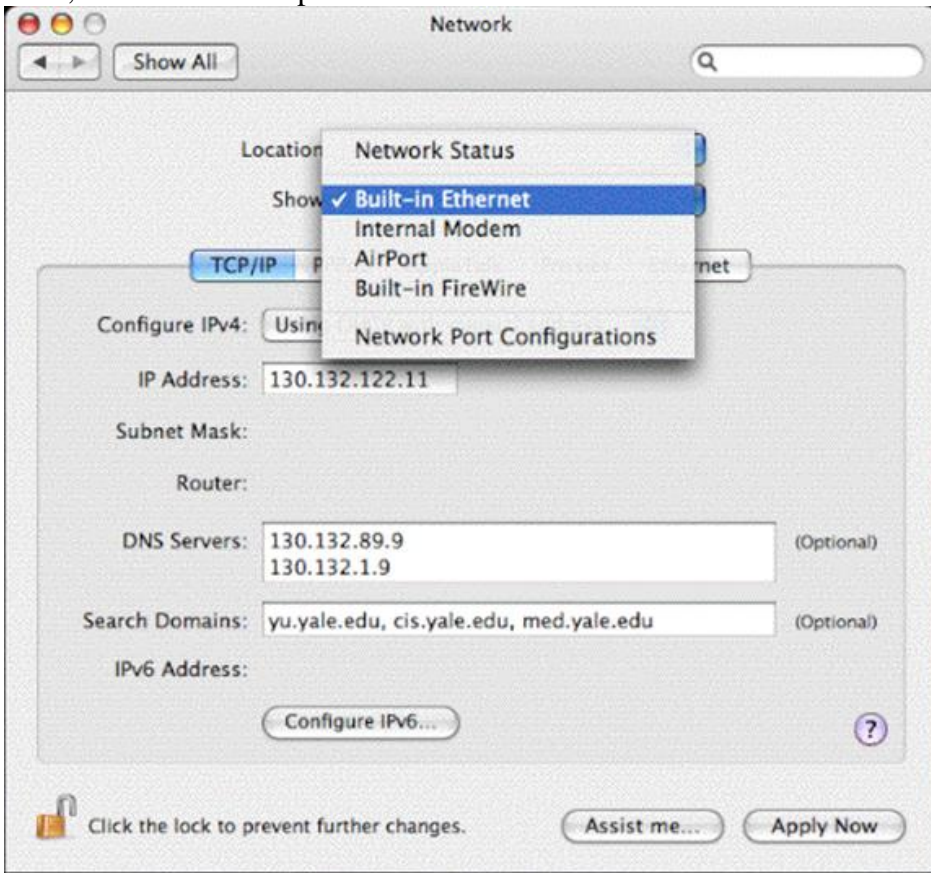


Once the window opens set the **Location** drop down menu to **Automatic** .

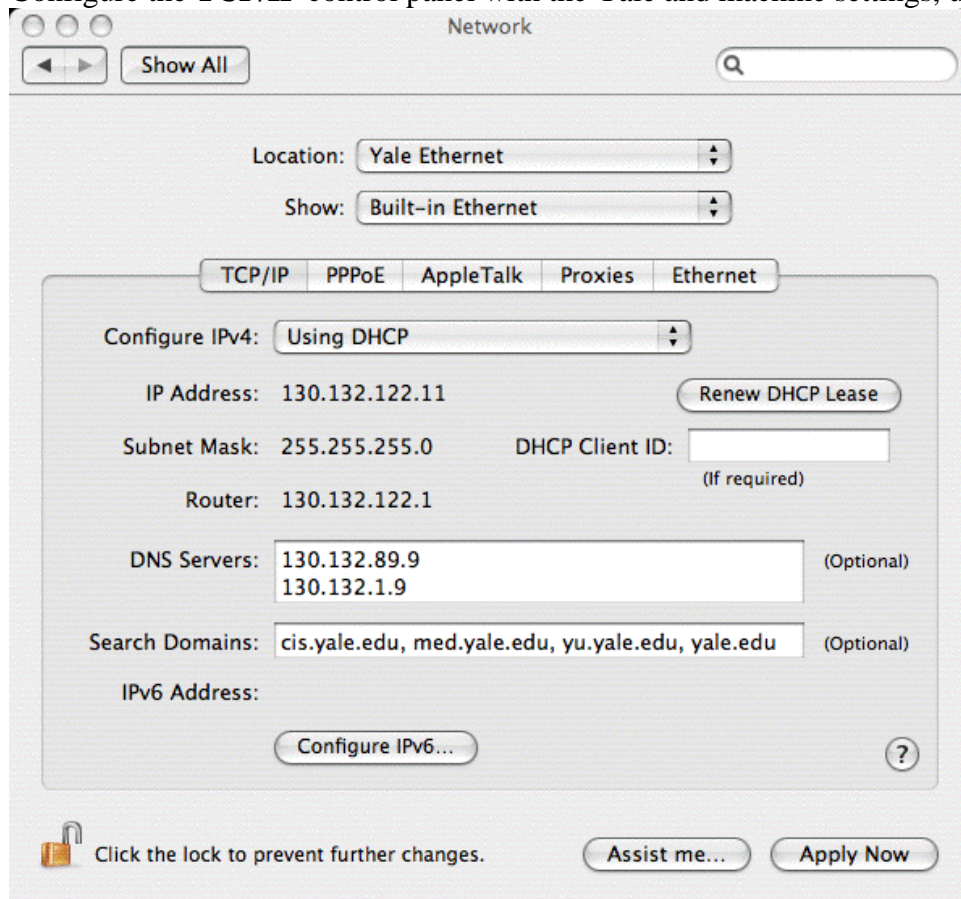
This will allow the computer to automatically choose the appropriate network connection once you have configured the system.



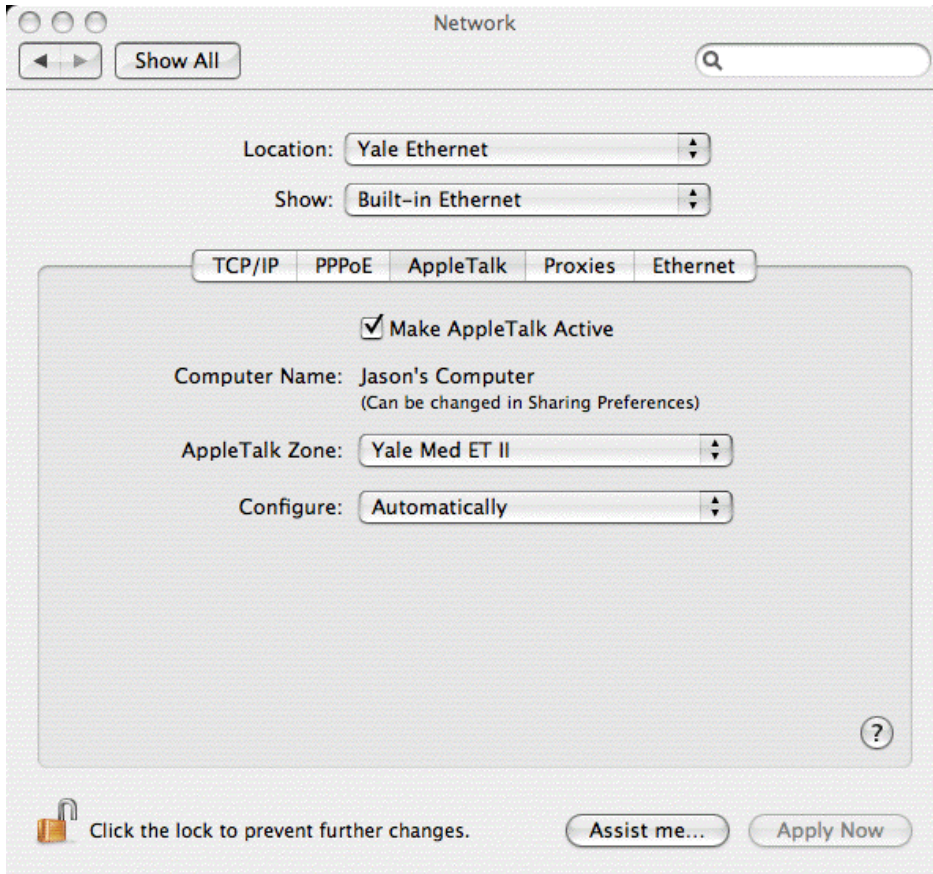
Now, set the Show drop down menu to **Built in Ethernet** .



Configure the **TCP/IP** control panel with the Yale and machine settings, usually **DHCP** .



Check the **Make AppleTalk Active** check box.



Choose **Apply Now**

You may want to **Click the lock to prevent further changes .**

