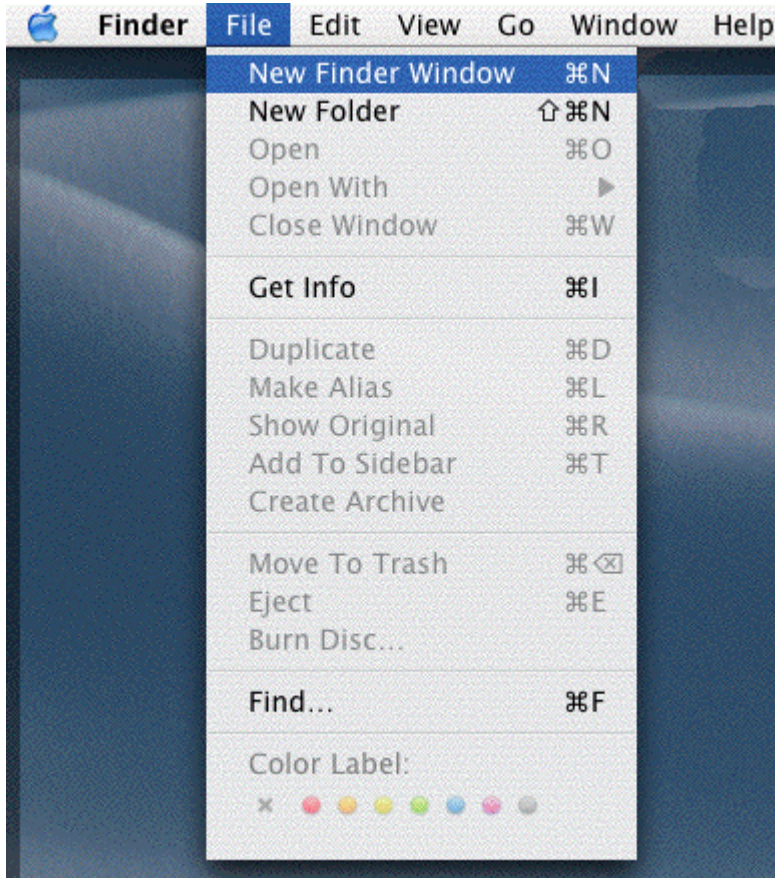




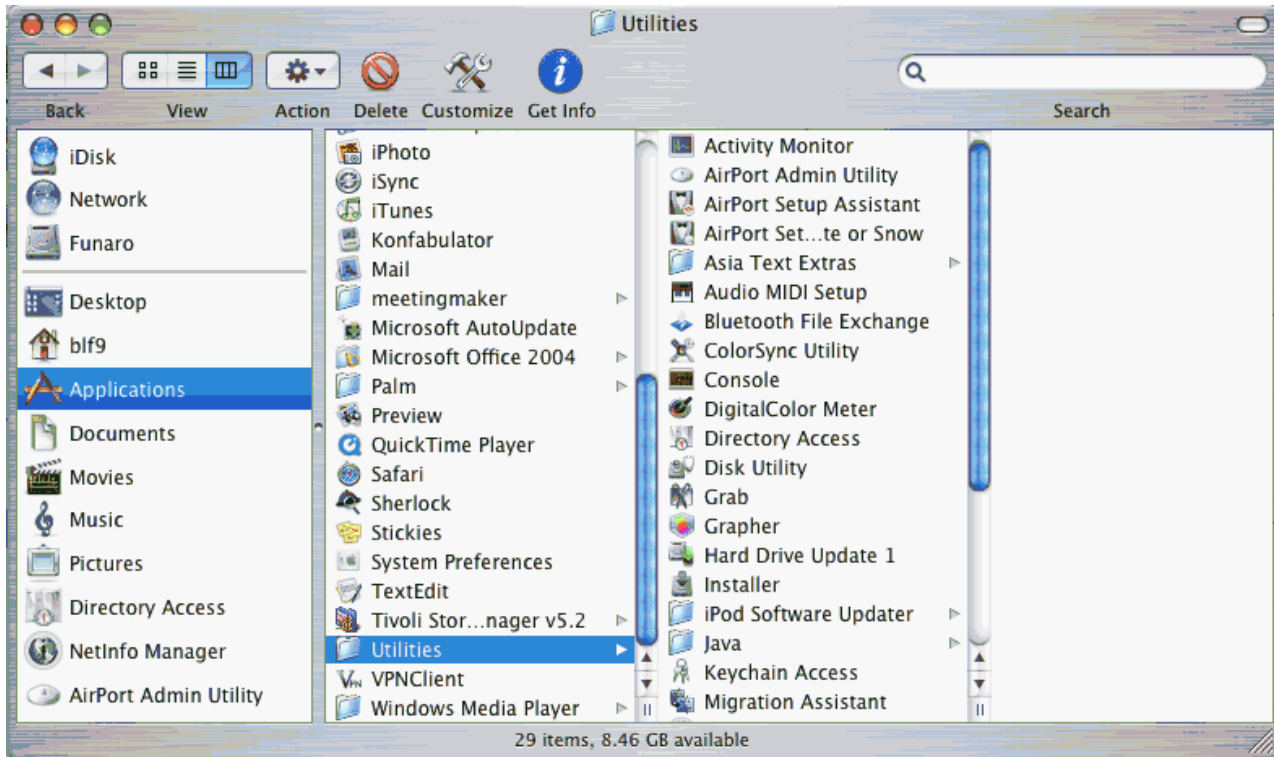
## Printing with Mac OS 10.4

This document will help you configure a printer via TCP/IP, Appletalk, or USB using Mac OS 10.

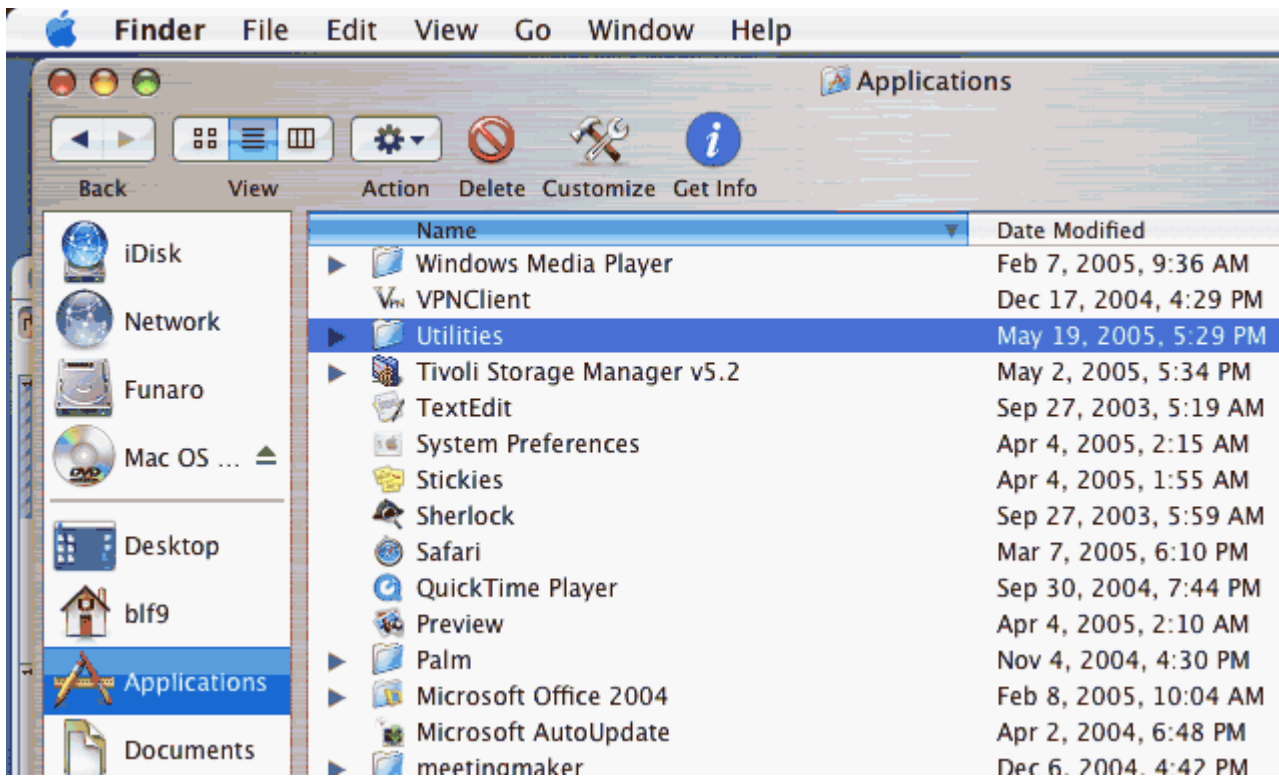
From the desktop go to the **File** menu and select **New Finder Window** or keystroke **command-N**.



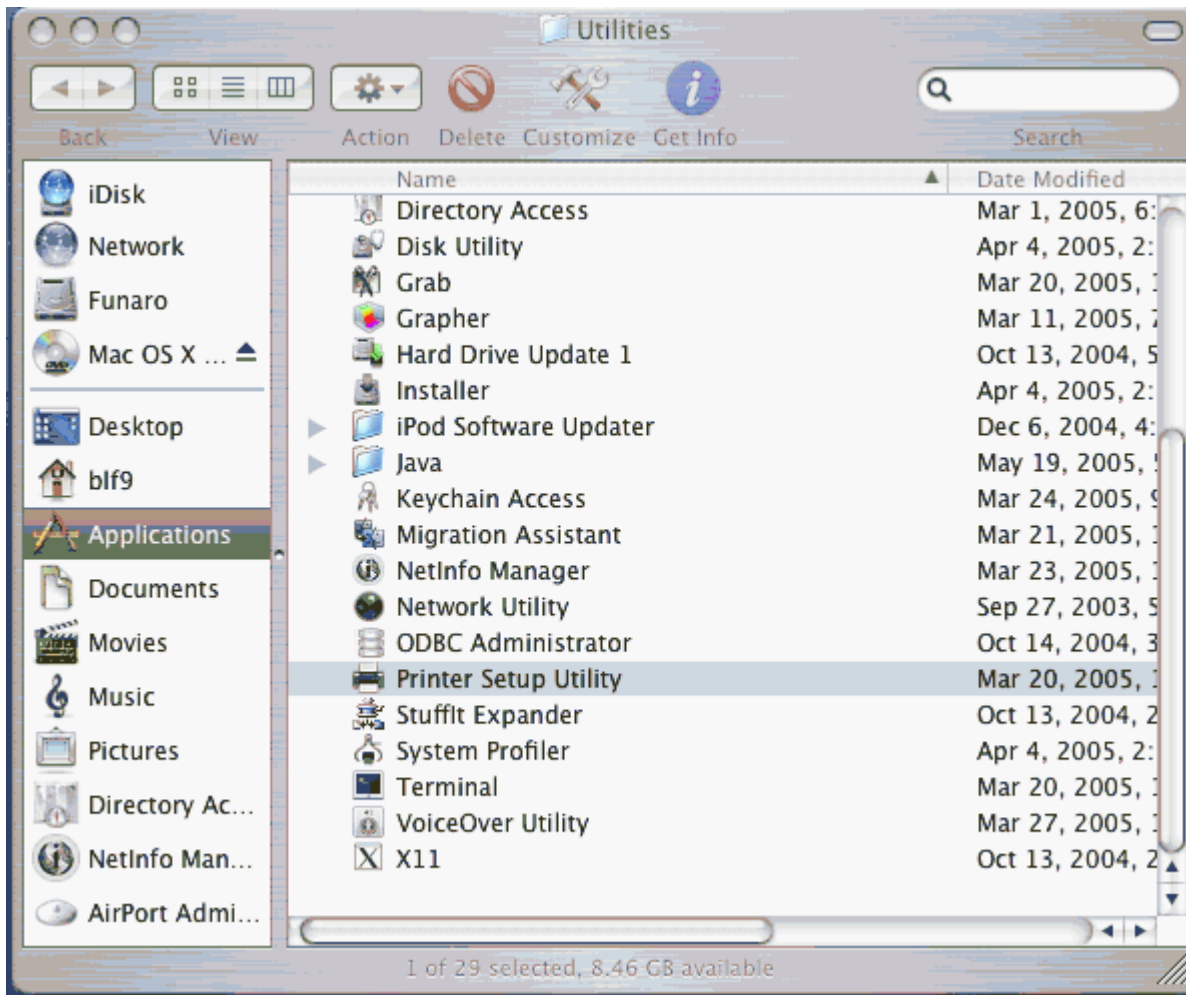
When the new window opens, click on the **Applications** icon in the tool bar.



This will open the applications folder. Within this folder locate the **Utilities Folder** and double click to open.



In the Utility folder you will find an icon called **Printer Setup Utility**.



Drag and drop this icon onto the **Dock** to make it easily accessible for later use.



Once the icon is in the Dock click on the icon and the Printer Setup Utility will open. Click the Add button. A new window will open.

In this window you will need to choose your method of connection from the drop down menu. Choose IP Printing for IP, AppleTalk , or USB for local printers.

## IP PRINTING

For IP Printing, choose IP Printer at the top of the window.

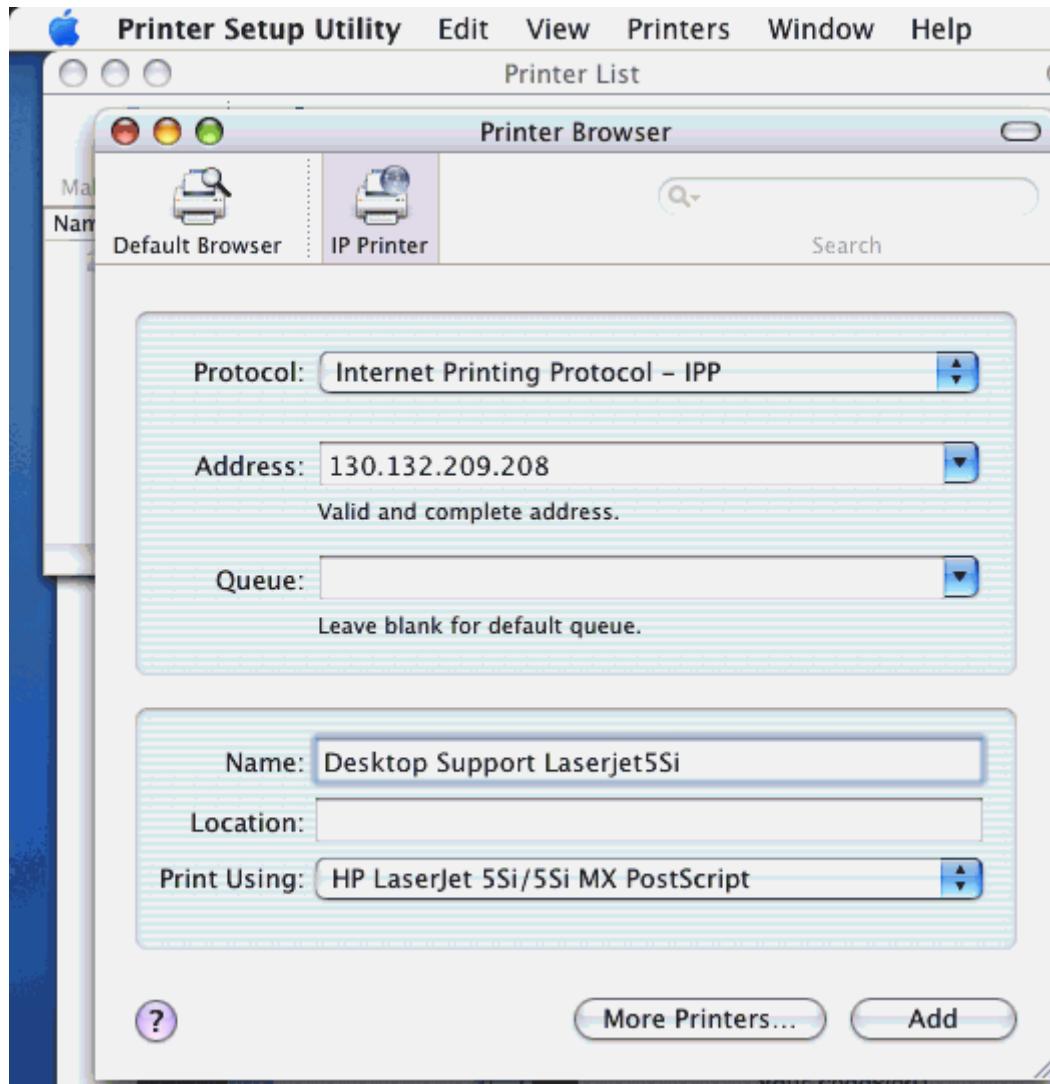
For protocol choose **Internet Printing Protocol – IPP**.

Type in the printers IP Address in the **Address:** field.

Type in a name for the printer in the **Name:** field. (This can be any name of your choosing)

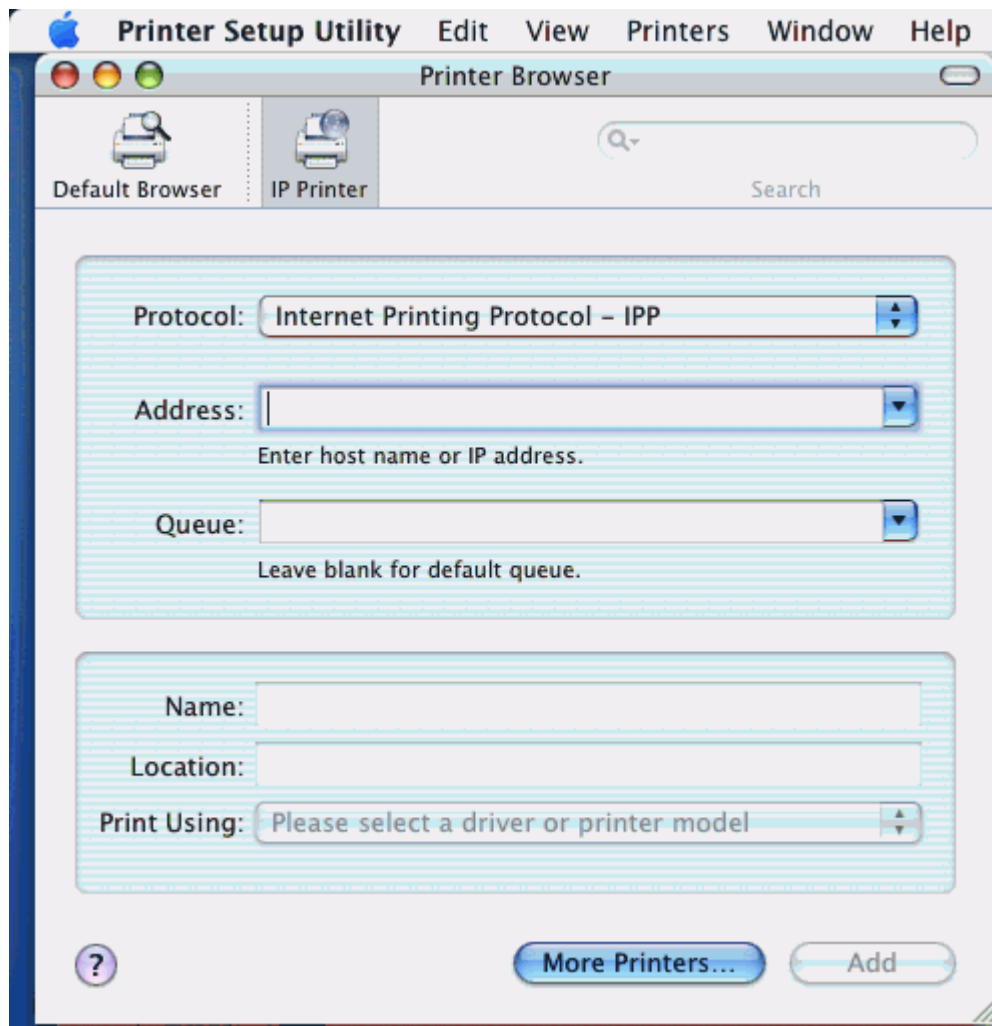
Click on the drop down menu next to **Print Using** and choose the printer description for your printer model.

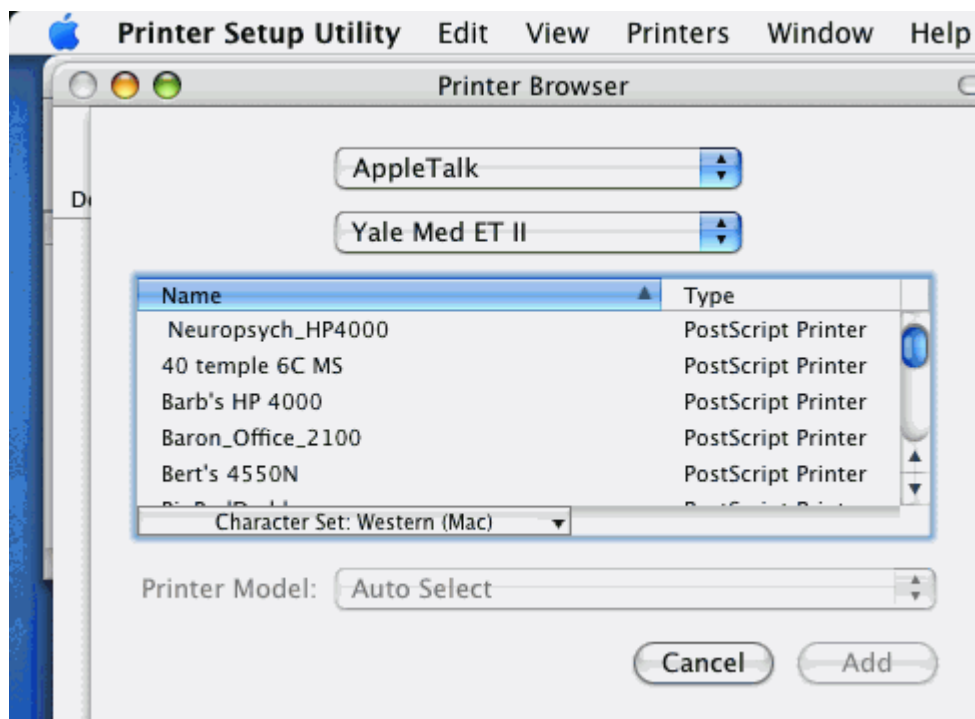
Once these steps are done click **Add** to create the printer.



## APPLETALK PRINTING SETUP.

Open the Printer Setup Utility, click **Add** and click on **More Printers**





You now need to choose the **correct zone** the printer is located in (for example, Yale Med ET II or Yale Med ET 130.132.19). Once the window is populated with available printers you will need to find the one you wish to print to and click on it once to select it. Next, choose the **Printer Model** from the drop down menu or choose **Auto Select** to have it done automatically. Once the choice is made click **Add** to create the printer.

## USB Printing

For local printing, choose **USB** as your connection method from the drop down menu. If compatible the printer should automatically be found. Select the printer and click **Add** to create the connection.

You now should be able to print.