



## L2TP connections – Windows 7

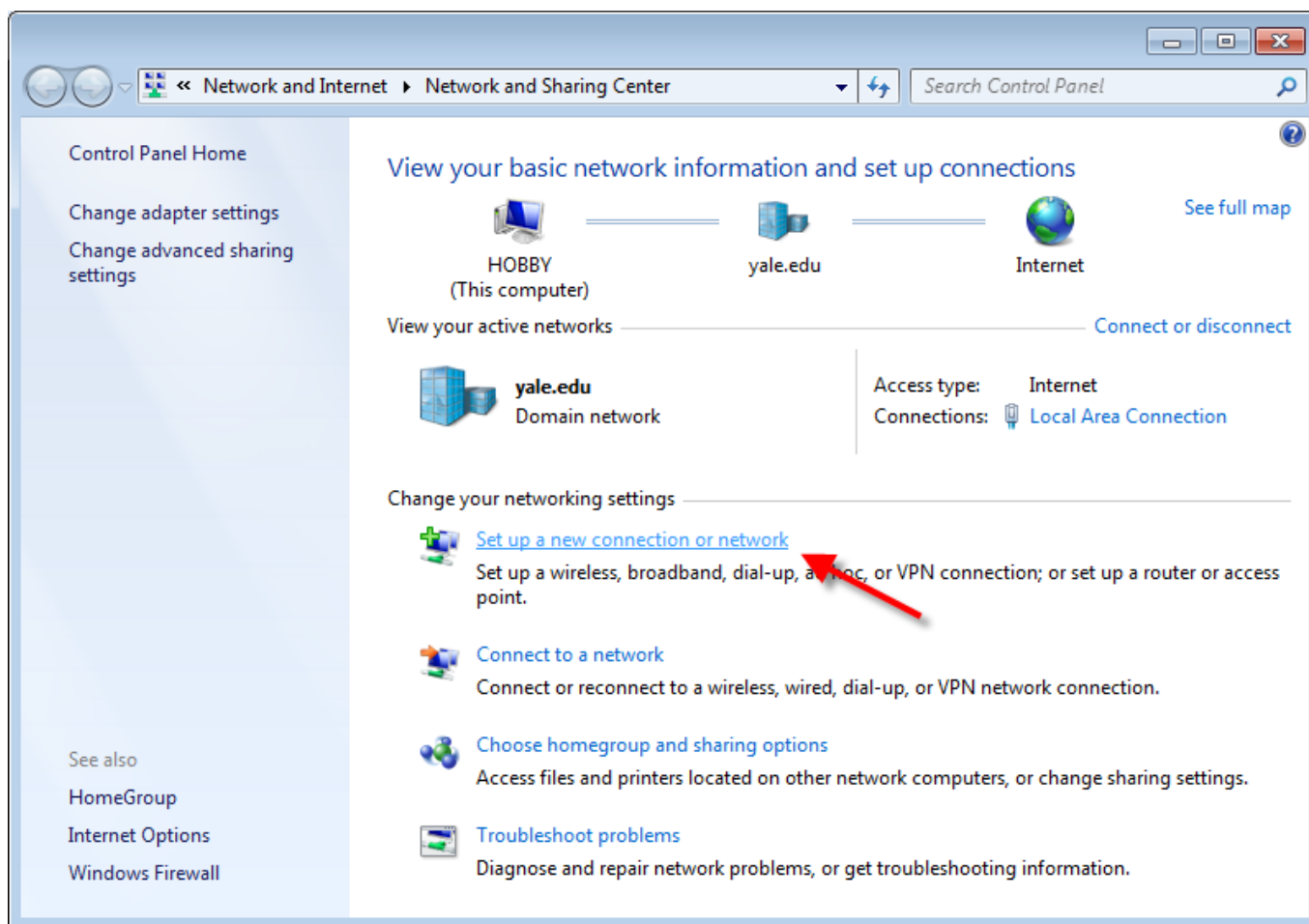
### No existing VPN connection

- Follow steps 1-14 to create a new a L2TP connection.

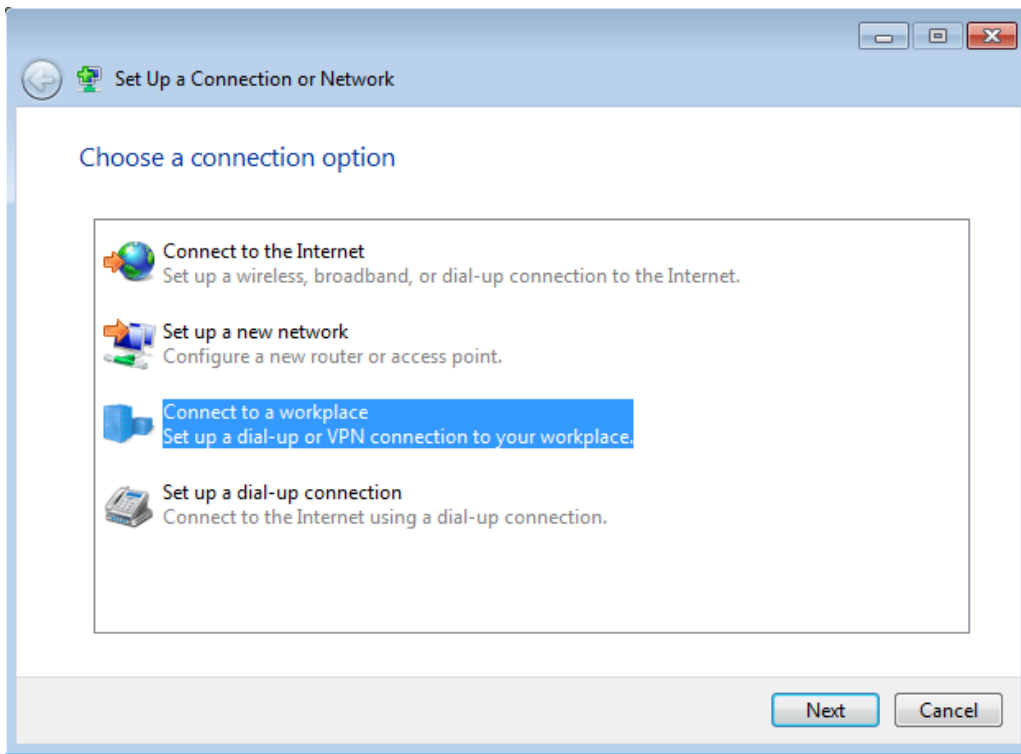
### Existing VPN connection in place

- Follow steps 1-3 > select “Connect to a network” and jump to step 10.

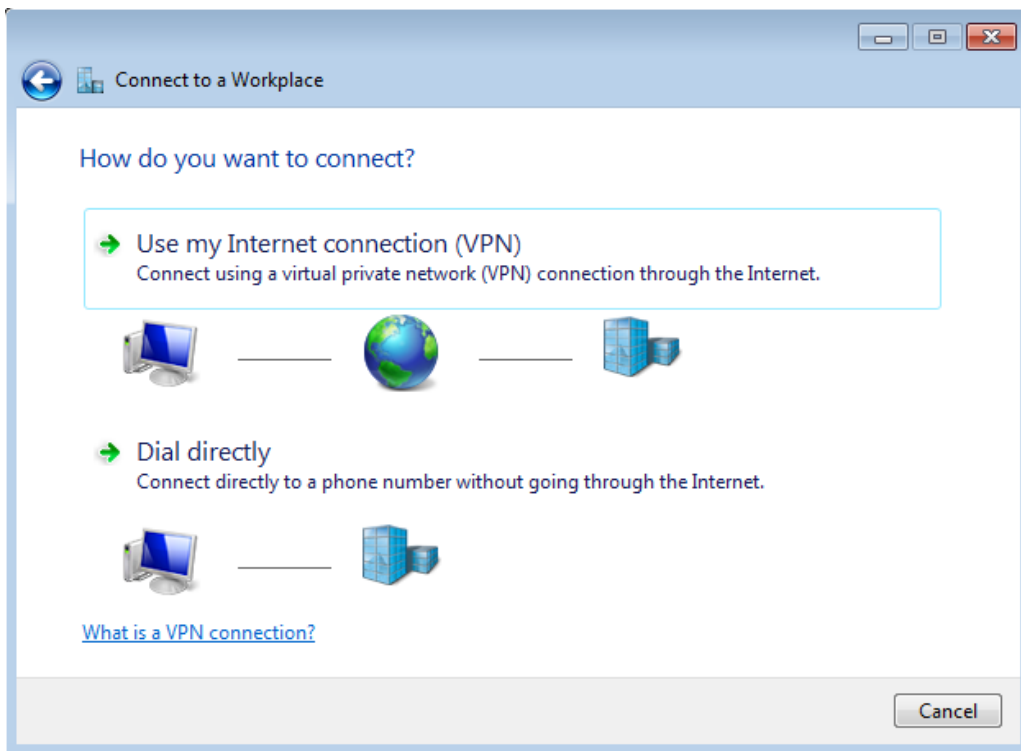
1. From the Start menu go to the Control Panel
2. Click on “Network and Internet”
3. Click on “Network and Sharing Center”
4. Click on **Set up a new connection or network:**



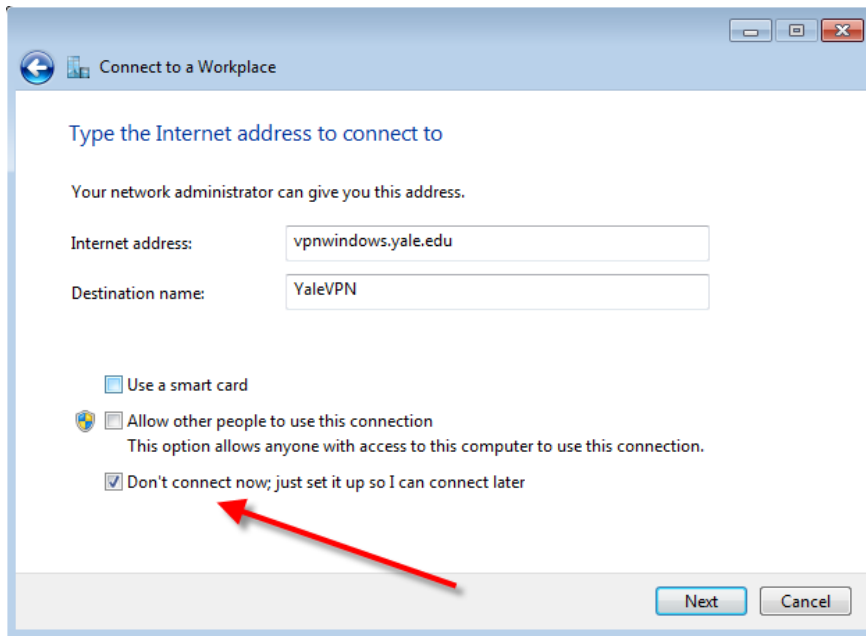
5. Select **Connect to a workplace** and press **Next**:



6. When asked How do you want to connect, select **Use my Internet connection (VPN)**:



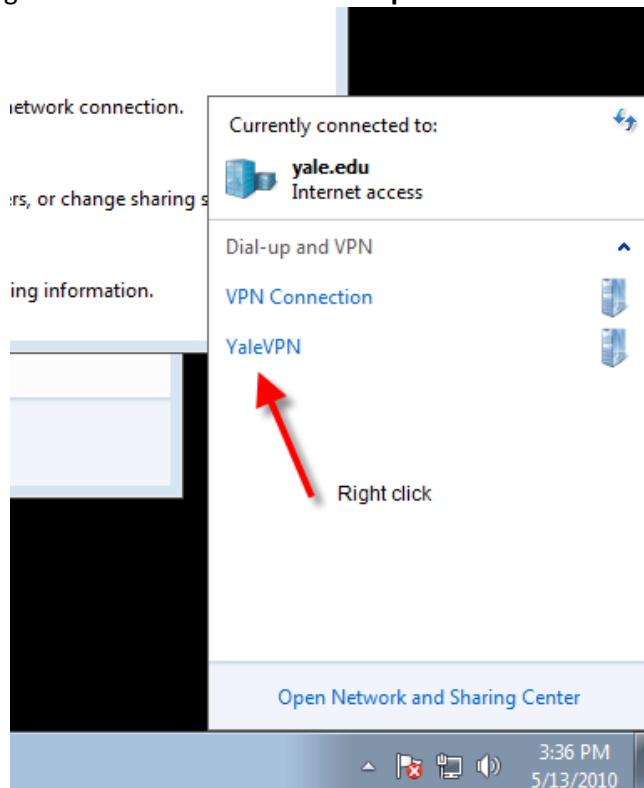
7. Enter **vpnwindows.yale.edu** in Internet address box and **YaleVPN** in the Destination name box. Then check **Don't connect now; just set up so I can connect later**. Select **Next**



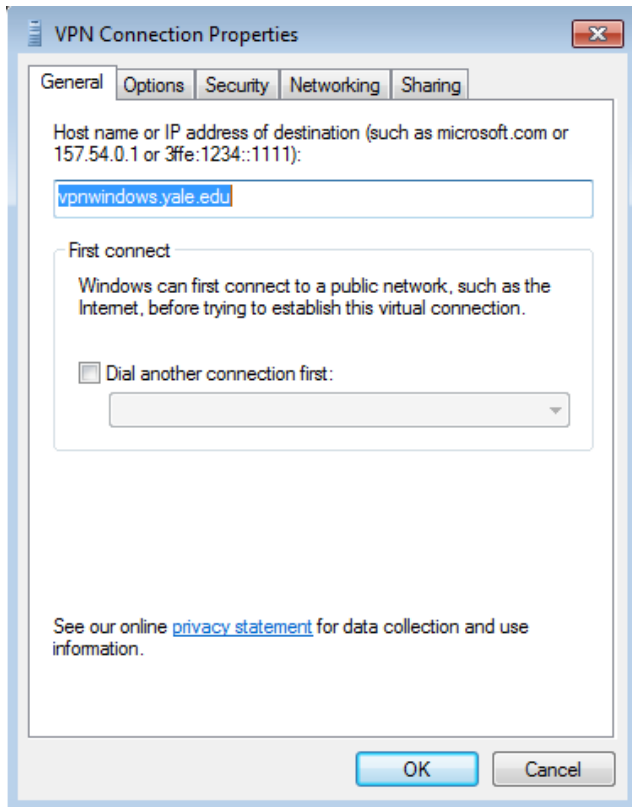
8. Enter your username and select "Create". Then close the next screen. This will take you back to the "Network and Sharing Center".

9. Select "Connect to a network"

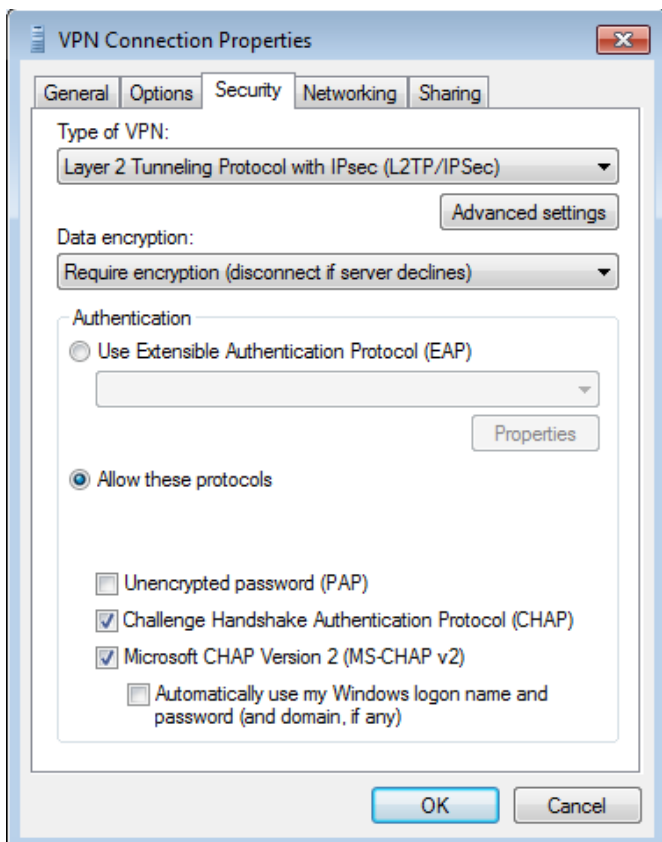
10. Right-click **YaleVPN** and select **Properties**:



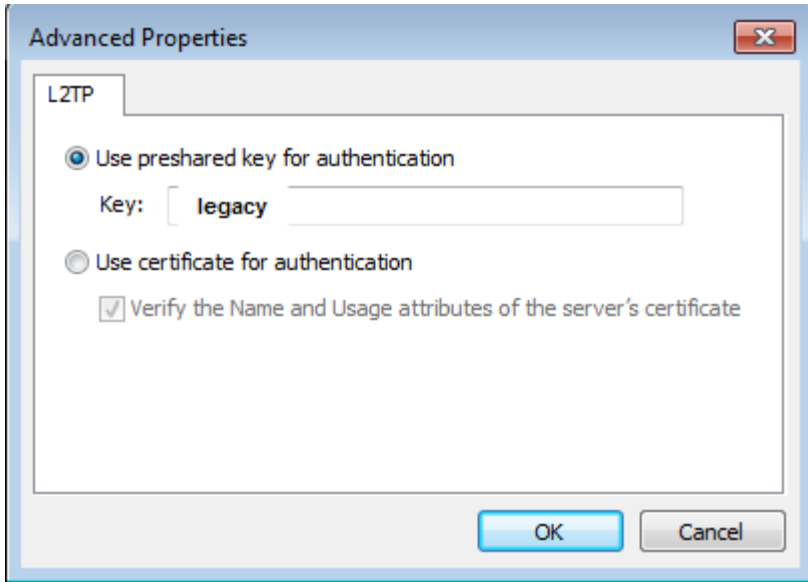
11. Select the Security tab



12. Set the type of VPN to L2TP/IPSec. Then click **Advanced settings**:



13. Select **Use pre-shared key for authentication** and enter “legacy”



14. Enter **OK** twice to return to the “Network and Sharing Center”