

ANNUAL REPORT
INTERNATIONAL STUDENTS AND SCHOLARS
AT YALE UNIVERSITY



PREPARED BY

OFFICE OF INTERNATIONAL STUDENTS AND SCHOLARS

TABLE OF CONTENTS

Introduction	3
International Students	
Comparative Data from 1995-2004	
Annual Enrollment	4
Percentages of Enrollment	4
Enrollment by School	5
Fall 2004 Data	
By School	5
By School and Gender	6
Percentage of Enrollment by School	6
By World Region	7-16
Top Ten Countries	17
By Country of Citizenship	18-20
Optional Practical Training	21
English Language Institute Enrollments	21
International Scholars	
International Scholars, 1994—2004	22
Academic Year 2003-2004	
By School	23
By Department or Unit	24
Top Twenty Sending Countries	25
By Country and World Region	26
By World Region	27
Leading Institutions Hosting International Scholars	28
Ivy League and Other Institutions	29
International Student Enrollment Fall 2004	30
International Student as a Percent of All Students Fall 2004	31
International Undergraduate Student Enrollment Fall 2004	32
International Undergraduate Student as a Percent of All Students Fall 2004	33
International Graduate & Professional Student Enrollment Fall 2004	34
Int'l Graduates & Professionals as a Percent of Total Graduates & Professionals Fall 2004	35
International Scholars at Ivy League And Other Institutions Fall 2003-2004	36
International Scholars by Visa Type	37
OISS Programs and Services	38

INTRODUCTION

The Office of International Students and Scholars (OISS) is pleased to provide the Yale University community with our enhanced annual report on international student and scholar statistics*. Included in this report are the international student enrollment figures for Fall 2004 and the international scholar figures for the academic year 2003-2004. We have also included data on the enrollment trends at Yale University for the last ten years, as well as comparative data from national international student and scholar statistics and from our Ivy League colleagues.

Despite the decline in graduate school applications to US institutions and the increasing challenges faced by international students and scholars in coming to and remaining in the U.S., it is encouraging to see that the international student numbers at Yale University have remained constant and our international scholar numbers have continued to increase.

Today, the presence of 1,759 international students (representing nearly 16% of the total full-time student University enrollment) and over 1770 international scholars represents the largest international community in Yale's history and reflects the significant growth of these populations in the last fifteen years. The last decade has seen an overall increase of almost 30% (from 1,360 in 1995-96 to 1,759 in 2004-05) in the total number of international students at Yale. In the last fifteen years Yale College has experienced nearly a tripling in the number of international student enrollments (from 164 in 1989-90 to 446 in 2004-2005). Since the fall of 2001 Yale international student enrollment figures have remained constant, declining only slightly (0.3%) in the fall of 2004.

In addition, Yale University continues to see significant annual increases in the numbers of international scholars, more than doubling the numbers (from 777 in 1992-93 to 1,770 in 2003-2004.) These include individuals who come to Yale to assume research and teaching responsibilities, to collaborate with colleagues or to observe in laboratory, classroom or clinical settings. This does not include the large number of international visitors who come to Yale for very short periods of time to give lectures and participate in seminars and symposia.

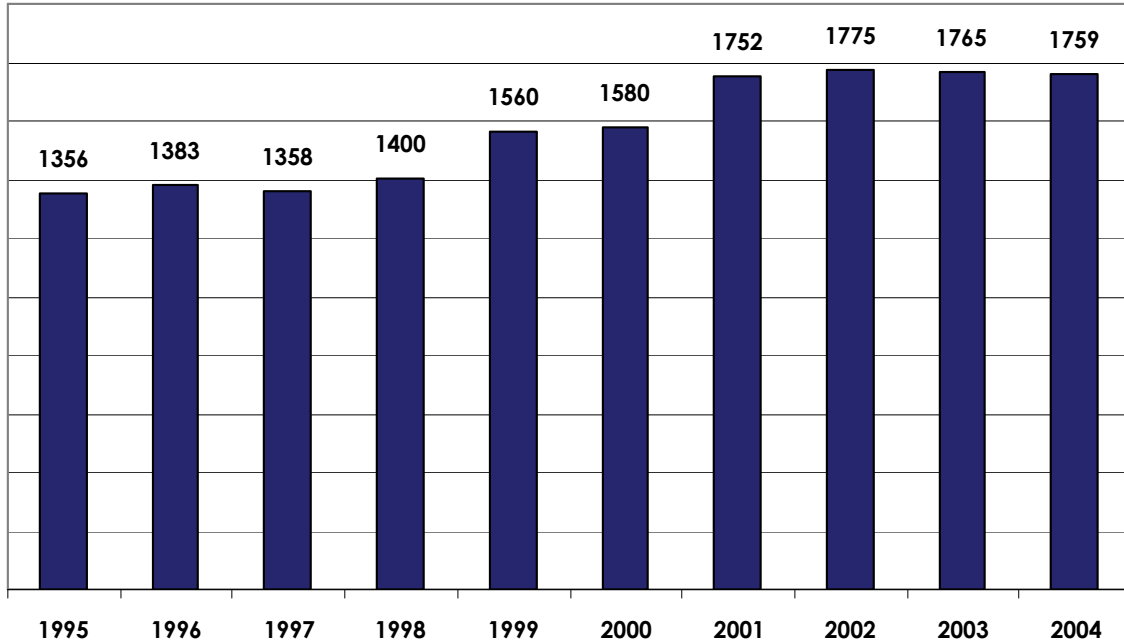
Managing the international student and scholar data has become increasingly complicated with the additional reporting requirements imposed by the Department of Homeland Security's SEVIS program. I am grateful to my colleagues for their diligence in working to improve the quality of this data and am particularly appreciative of OISS associate director Gang Wang's effort in compiling this report. We welcome your suggestions on what other data might be included in future publications of this annual report.

Ann Kuhlman

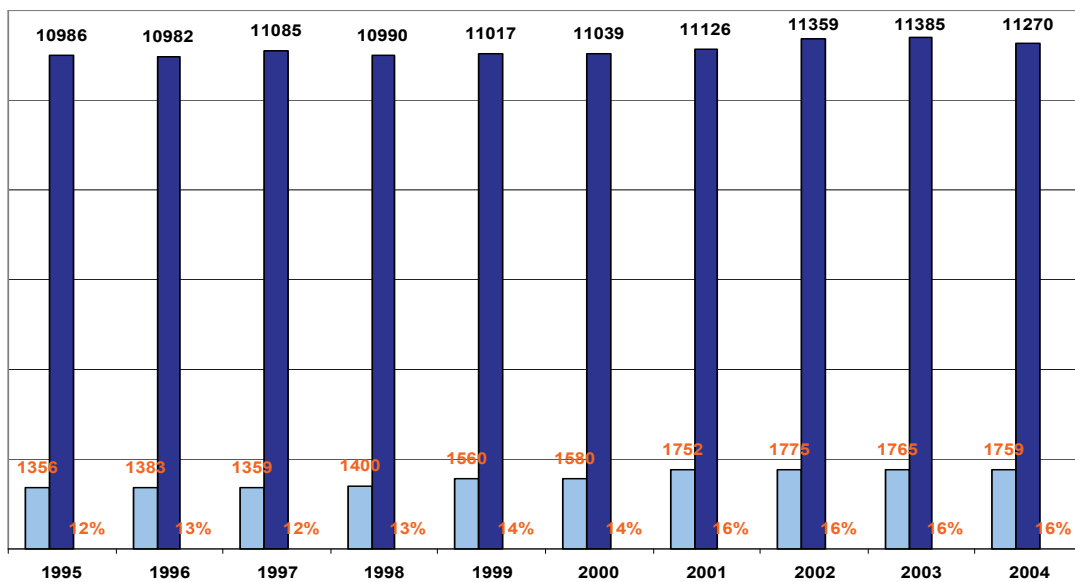
April 2005

*The international student and scholar counts at this report include individuals at Yale on non-immigrant visas, not including persons who come Yale in tourist status (B1, B2, WB an WT). These figures do not include US citizens or permanent resident status or those who have applications pending for U.S. permanent resident status. The small difference in the OISS and the Office of Institutional Research (OIR) statistics on international students exists because (1) OIR counts include students whose only legal status in the U.S. is that of a pending US permanent resident and (2) OISS counts international students based on physical presence and immigration status, as well as academic status and OIR uses academic status as their sole criteria. OISS and OIR continue to work together to reconcile our data.

INTERNATIONAL STUDENTS ANNUAL ENROLLMENT, 1995 - 2004



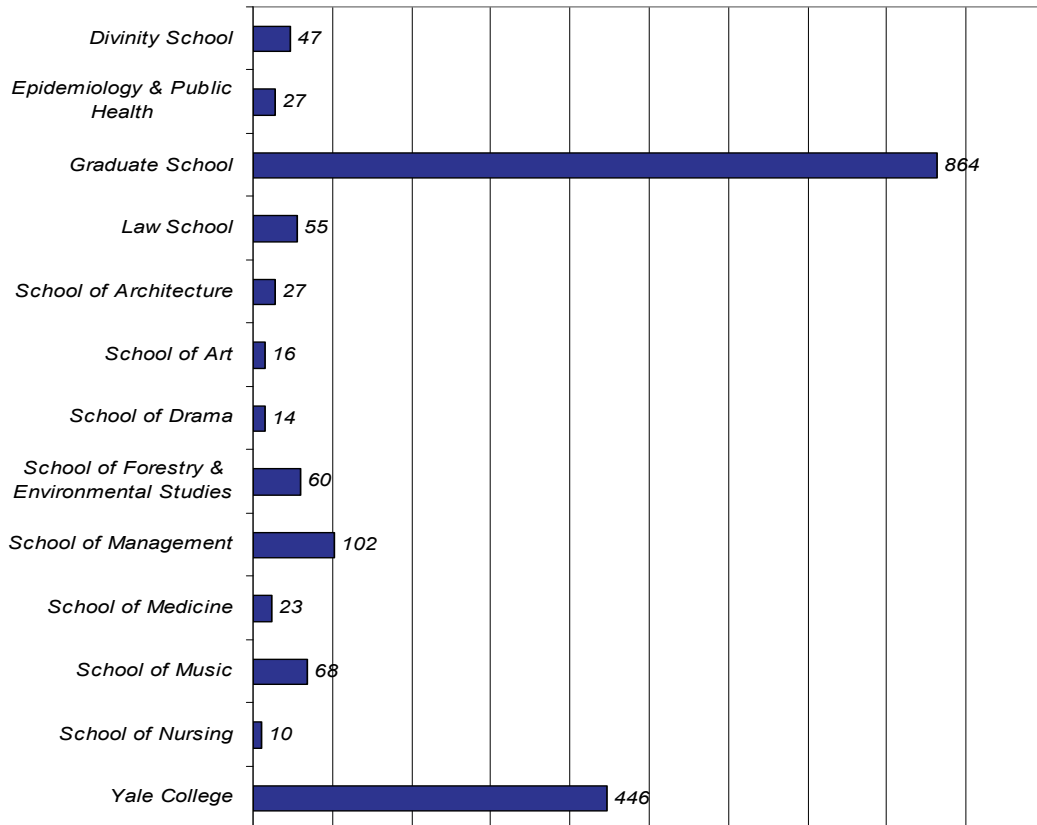
INTERNATIONAL STUDENTS PERCENTAGE OF YALE TOTAL ENROLLMENT



INTERNATIONAL STUDENTS BY SCHOOL

	1995	1996	1997	1998	1999	2000	2001	2002	2003	2004
Divinity School	12	14	21	15	25	39	51	44	47	47
Epidemiology & Public Health	50	47	45	31	43	21	23	24	24	27
Forestry & Environmental Studies	39	44	49	52	55	66	70	73	57	60
Graduate School	760	629	615	666	752	726	794	788	819	864
Law School	35	35	49	44	53	66	70	66	63	55
School of Architecture	19	27	25	25	34	32	43	48	34	27
School of Art	17	13	12	15	15	16	19	11	14	16
School of Drama	14	16	14	13	14	20	25	21	18	14
School of Management	67	126	100	90	109	128	167	183	137	102
School of Medicine	9	58	14	15	22	14	21	26	25	23
School of Music	73	79	76	68	77	72	73	68	62	68
School of Nursing	3	2	4	5	5	10	9	8	9	10
Yale College	258	293	335	361	356	370	387	415	456	446
Total	1356	1383	1359	1400	1560	1580	1752	1775	1765	1759

INTERNATIONAL STUDENTS BY SCHOOL, FALL 2004



INTERNATIONAL STUDENTS BY SCHOOL AND GENDER, FALL 2004

School	Female	Male	Total
Divinity School	18	29	47
Epidemiology & Public Health	19	8	27
Graduate School	344	520	864
Law School	23	32	55
School of Architecture	12	15	27
School of Art	8	8	16
School of Drama	8	6	14
School of Forestry & Environmental Studies	32	28	60
School of Management	24	78	102
School of Medicine	12	11	23
School of Music	41	27	68
School of Nursing	10		10
Yale College	209	237	446
Grand Total	760	999	1759

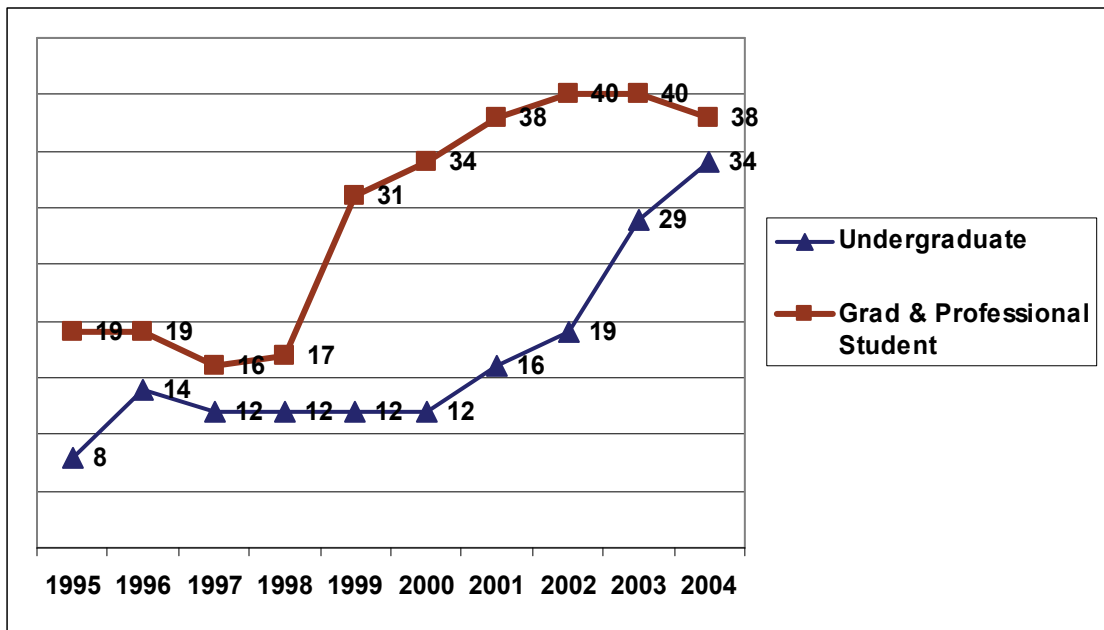
INTERNATIONAL STUDENTS AS A PERCENTAGE OF SCHOOL ENROLLMENT FALL 2004

School	Int'l Students	Total Students	Percentage of Total Enrollment
Divinity School	47	352	13%
Graduate School	864	2590	33%
Law School	55	630	9%
School of Architecture	27	190	14%
School of Art	16	119	13%
School of Forestry & Environmental Studies	60	242	25%
School of Management	102	439	23%
School of Medicine - EPH	27	248	11%
School of Medicine - MD	23	436	5%
School of Medicine - P.A.	0	61	0%
School of Music	68	175	39%
School of Nursing	10	293	3%
School of Drama	14	197	7%
Yale College	443	5242	8.50%
Yale College - Special Student	3	77	4%
TOTAL	1759	11359	15.50%

AFRICA: STUDENT ENROLLMENT, FALL 2004

Country	Undergraduate	Graduate	Total
Botswana	1		1
Central African Republic		1	1
Congo, Republic of The		1	1
Egypt		2	2
Ghana	8	6	14
Guinea		1	1
Kenya	7	7	14
Madagascar		2	2
Mauritius	2	1	3
Morocco	1		1
Nigeria	1	8	9
South Africa	5	3	8
Tanzania	2	1	3
Togo		1	1
Uganda		2	2
Zambia	2		2
Zimbabwe	5	2	7
Total	34	38	72

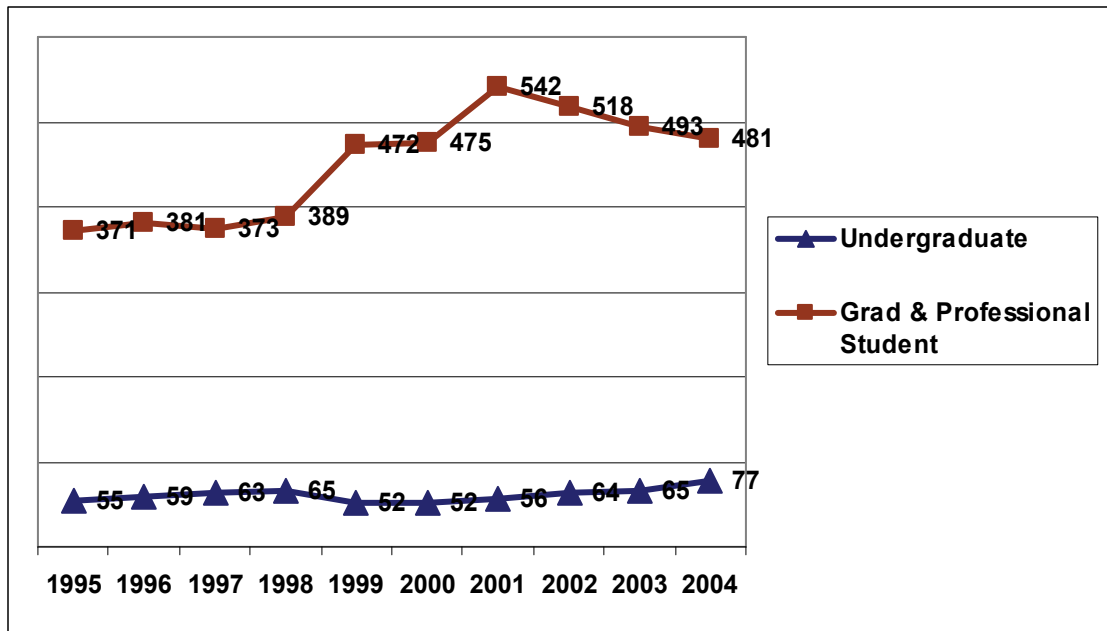
AFRICA REGIONAL TRENDS 1995-2004



EAST ASIA: STUDENT ENROLLMENT, FALL 2004

Country	Undergraduate	Graduate & Professional Student	Total
China	30	274	304
Korea, South	31	110	141
Japan	7	41	48
Taiwan	3	43	46
Hong Kong	6	12	18
Macau		1	1
Total	77	481	558

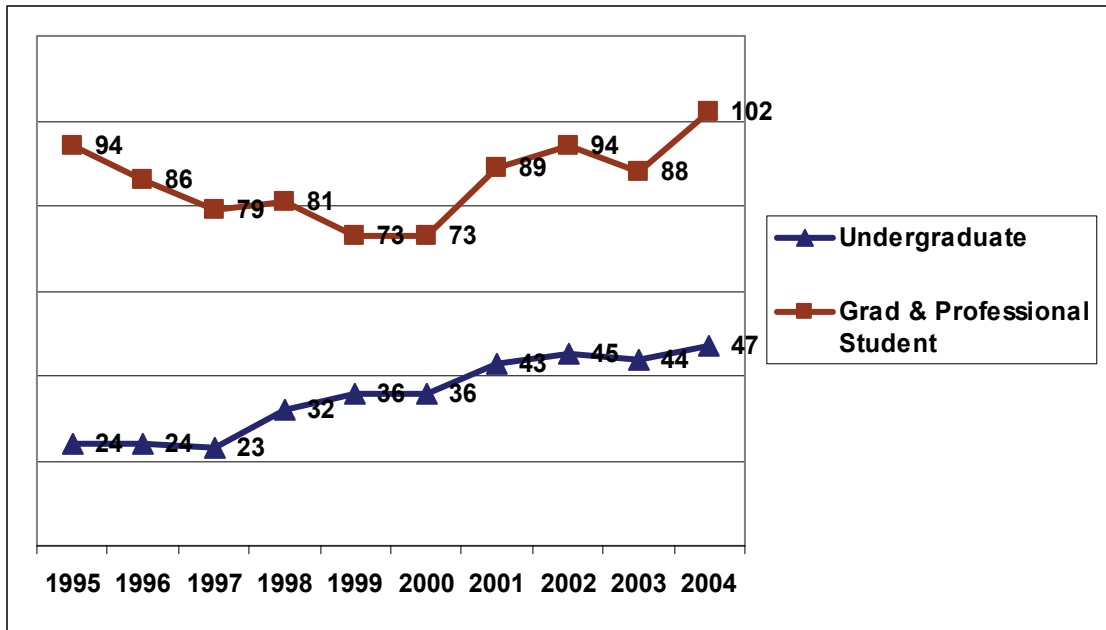
EAST ASIA REGIONAL TRENDS 1995-2004



SOUTH CENTRAL ASIA: STUDENT ENROLLMENT FALL 2004

Country	Undergraduate	Graduate & Professional Student	Total
Bangladesh	2	3	5
Bhutan		1	1
India	23	77	100
Kazakhstan	1	1	2
Nepal	1	2	3
Pakistan	14	11	25
Sri Lanka	6	5	11
Uzbekistan		2	2
Total	47	102	149

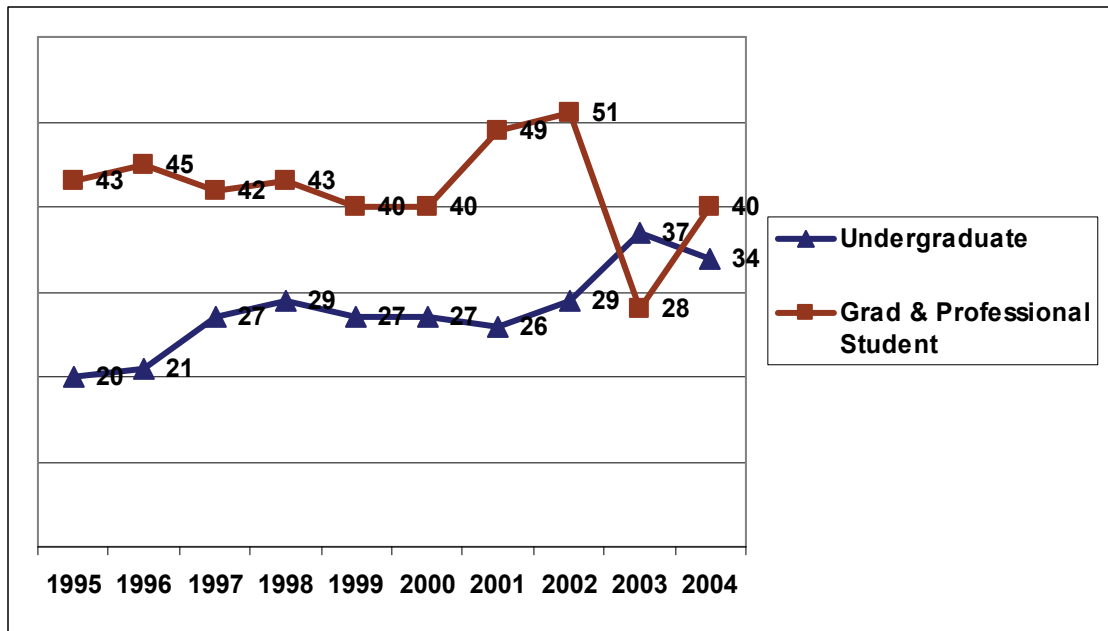
SOUTH CENTRAL ASIA: REGIONAL TRENDS 1995-2004



SOUTH EAST ASIA: STUDENT ENROLLMENT, FALL 2004

Country	Undergraduate	Graduate & Professional Student	Total
Burma		1	1
Indonesia	2	1	3
Laos		1	1
Malaysia	9	6	15
Philippines	3	4	7
Singapore	14	20	34
Thailand	6	5	11
Vietnam		2	2
Total	34	40	74

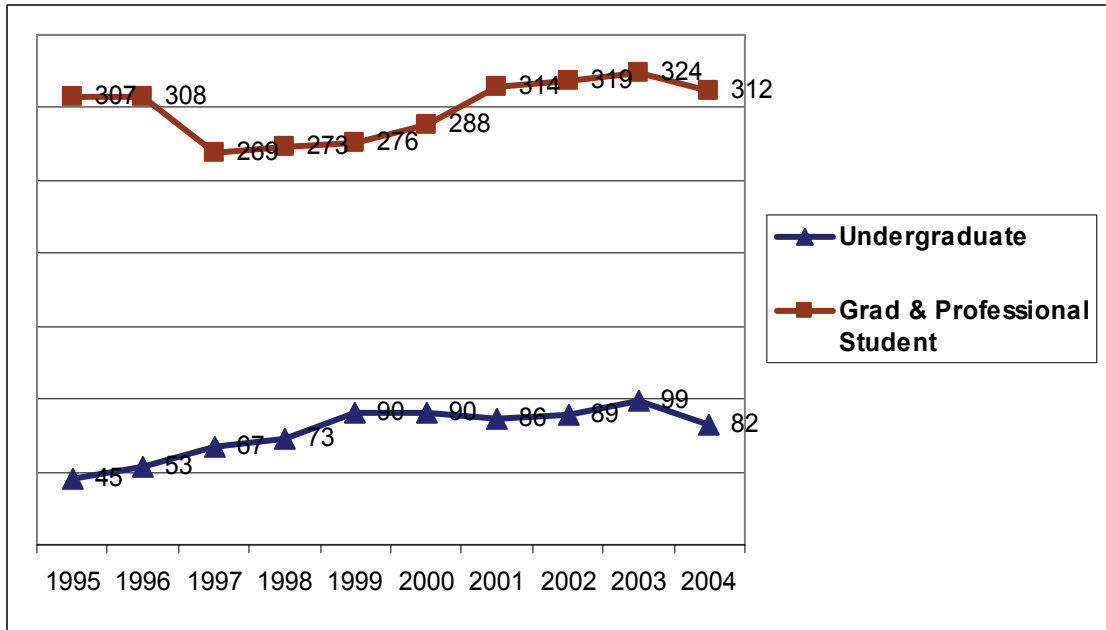
SOUTH EAST ASIA: REGIONAL TRENDS 1995-2004



EUROPE: STUDENT ENROLLMENT, FALL 2004

Country	Undergraduate	Graduate & Professional Student	Total
Albania		2	2
Armenia	1	1	2
Austria	1	4	5
Belarus		1	1
Belgium		5	5
Bulgaria	8	17	25
Croatia	2	5	7
Czech Republic		1	1
Denmark		6	6
Estonia	1	1	2
Finland		2	2
France	2	18	20
Germany	8	58	66
Greece	7	11	18
Hungary		2	2
Iceland		1	1
Ireland	5	9	14
Italy	5	37	42
Latvia		1	1
Liechtenstein		1	1
Lithuania		2	2
Macedonia, The Republic of	1		1
Malta		1	1
Moldova	1		1
Netherlands		3	3
Norway	3	2	5
Poland	5	8	13
Portugal		3	3
Romania	1	6	7
Russia	4	16	20
Slovakia	2		2
Spain	1	17	18
Sweden		5	5
Switzerland	3	6	9
Ukraine	2	8	10
United Kingdom	13	49	62
Yugoslavia	6	3	9
Total	82	312	394

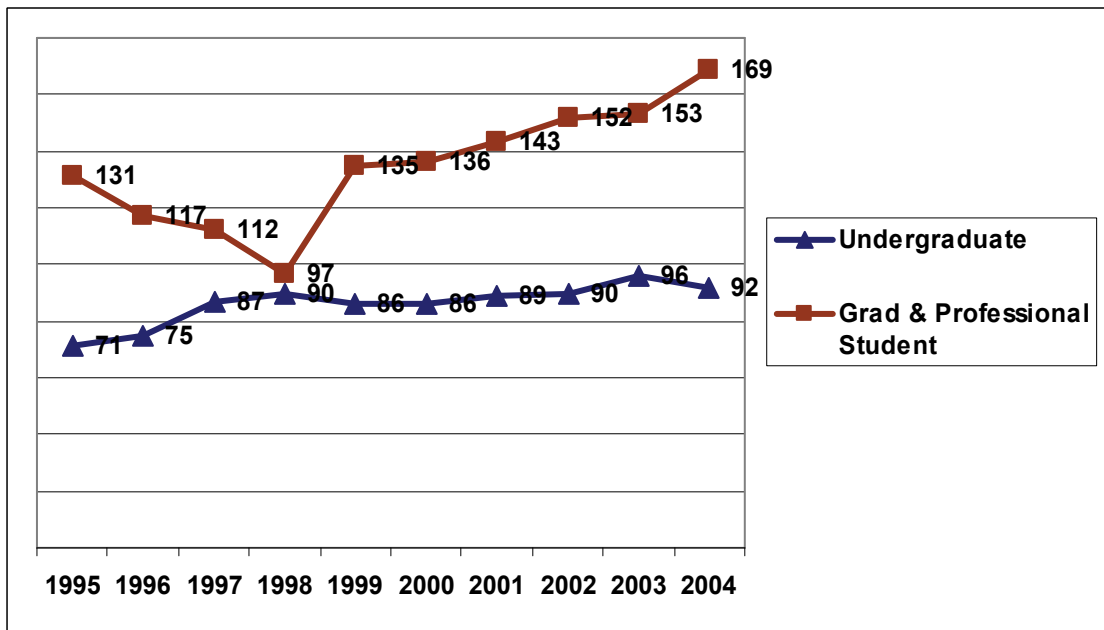
EUROPE: REGIONAL TRENDS 1995-2004



NORTH AMERICA: STUDENT ENROLLMENT, FALL 2004

Country	Undergraduate	Graduate & Professional Student	Total
Canada	84	142	226
Mexico	8	27	35
Total	92	169	261

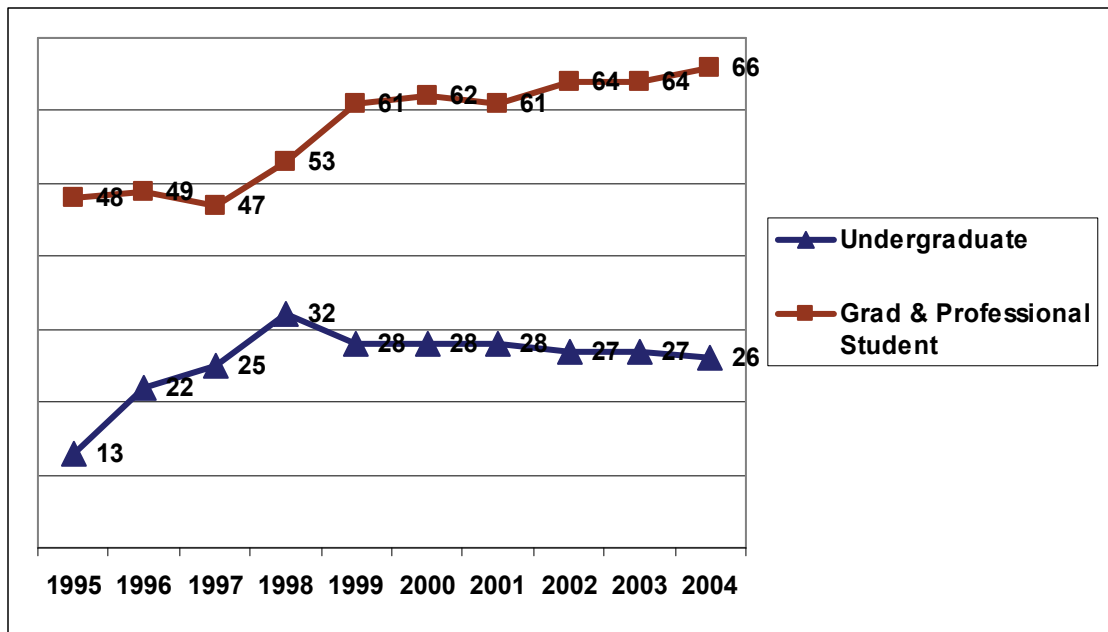
NORTH AMERICA: REGIONAL TRENDS 1995-2004



MIDDLE EAST: STUDENT ENROLLMENT, FALL 2004

Country	Undergraduate	Graduate & Professional Student	Total
Bahrain	1		1
Cyprus	1	4	5
Iran		8	8
Israel	4	23	27
Kuwait		1	1
Lebanon		6	6
Turkey	20	24	44
Total	26	66	92

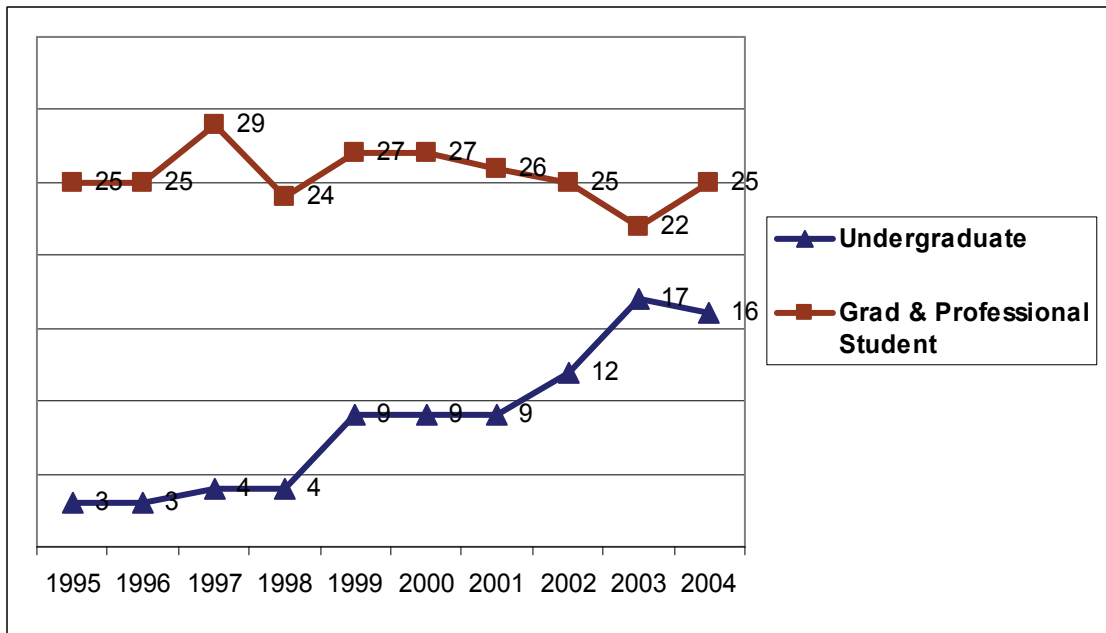
MIDDLE EAST: REGIONAL TRENDS 1995-2004



OCEANIA: STUDENT ENROLLMENT, FALL 2004

Country	Undergraduate	Graduate	Total
Australia	14	17	31
New Zealand	2	8	10
Total	16	25	41

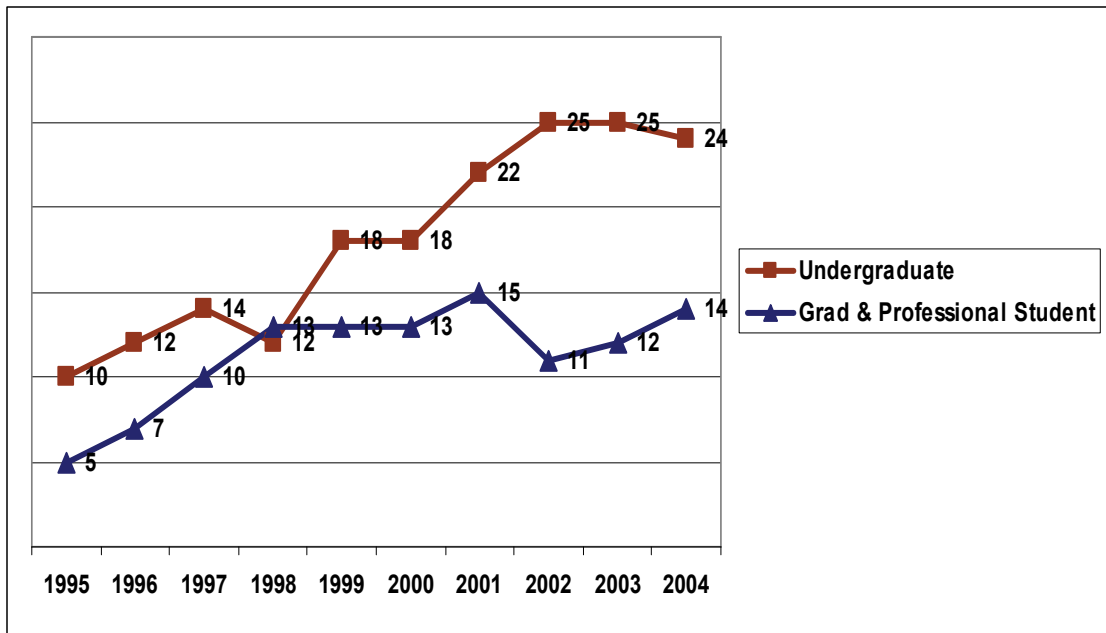
OCEANIA: REGIONAL TRENDS 1995-2004



THE CARIBBEAN & CENTRAL AMERICA: STUDENT ENROLLMENT, FALL 2004

Country	Undergraduate	Graduate & Professional Student	Total
Bahamas, The	1	1	2
Barbados	1		1
Belize		1	1
Costa Rica	2	2	4
El Salvador		1	1
Honduras	1		1
Jamaica	7	6	13
Nicaragua	1		1
Panama	1		1
Saint Kitts and Nevis	1		1
St. Lucia		2	2
Trinidad & Tobago	9	1	10
Total	24	14	38

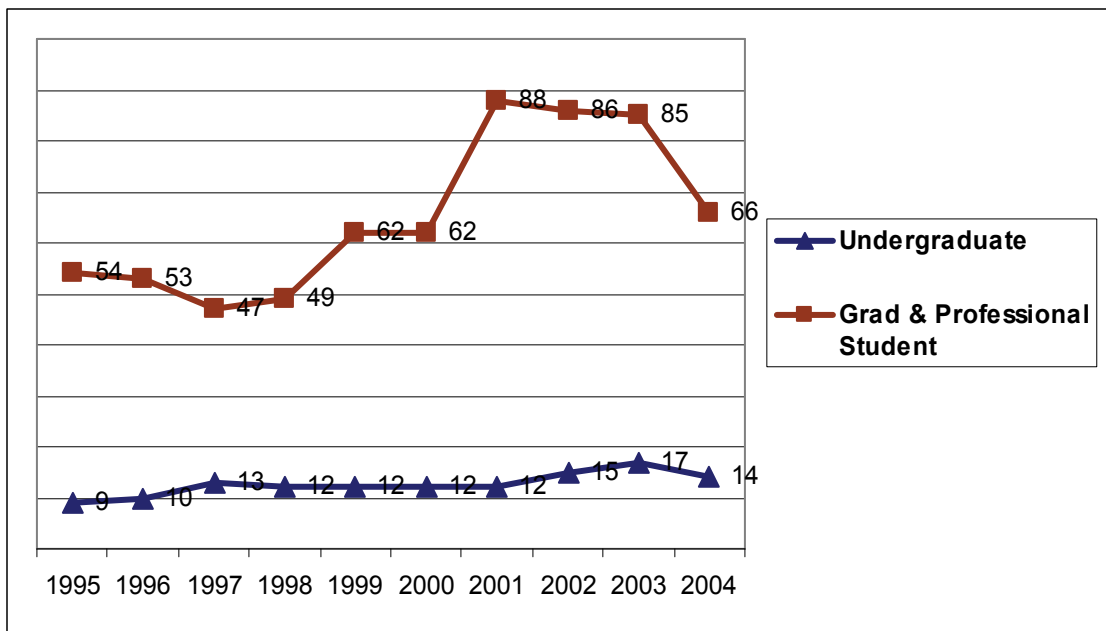
THE CARIBBEAN & CENTRAL AMERICA: REGIONAL TRENDS 1995-2004



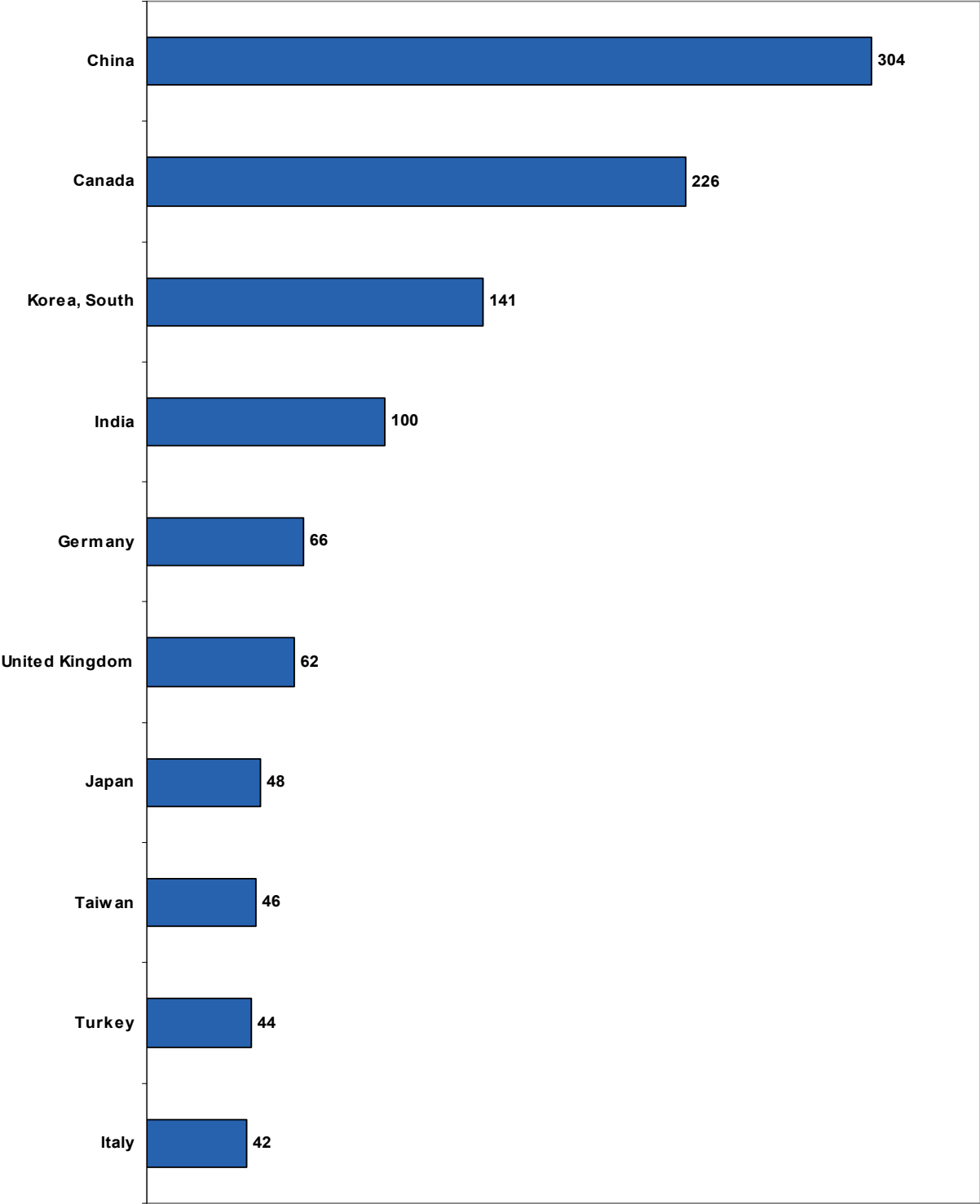
SOUTH AMERICA: STUDENT ENROLLMENT, FALL 2004

Country	Undergraduate	Graduate & Professional Student	Total
Argentina	1	14	15
Bolivia	3	1	4
Brazil	2	21	23
Chile	1	7	8
Colombia	3	8	11
Ecuador	1		1
Peru	3	9	12
Uruguay		3	3
Venezuela		3	3
Total	14	66	80

SOUTH AMERICA: REGIONAL TRENDS 1995-2004



INTERNATIONAL STUDENTS TOP TEN COUNTRIES, FALL 2004



INTERNATIONAL STUDENTS BY COUNTRY OF CITIZENSHIP FALL 2004

Citizenship	Undergraduate	Graduate & Professional Student	Other	Grand Total
Albania		2		2
Argentina	1	14		15
Armenia	1	1		2
Australia	14	17		31
Austria	1	4		5
Bahamas, The	1	1		2
Bahrain	1			1
Bangladesh	2	3		5
Barbados	1			1
Belarus		1		1
Belgium		5		5
Belize		1		1
Bhutan		1		1
Bolivia	3	1		4
Botswana	1			1
Brazil	2	21		23
Bulgaria	8	17		25
Burma		1		1
Canada	84	142		226
Central African Republic		1		1
Chile	1	7		8
China	30	274		304
Colombia	3	8		11
Congo, Republic of The		1		1
Costa Rica	2	2		4
Croatia	2	5		7
Cyprus	1	4		5
Czech Republic		1		1
Denmark		6		6
Ecuador	1			1
Egypt		2		2
El Salvador		1		1
Estonia	1	1		2
Finland		2		2
France	2	18		20
Germany	8	58		66
Ghana	8	6		14
Greece	7	11		18
Guinea		1		1
Honduras	1			1
Hong Kong	6	12		18
Hungary		2		2
Iceland		1		1

Annual Report on International Students and Scholars at Yale University Fall 2004

Continued from previous page

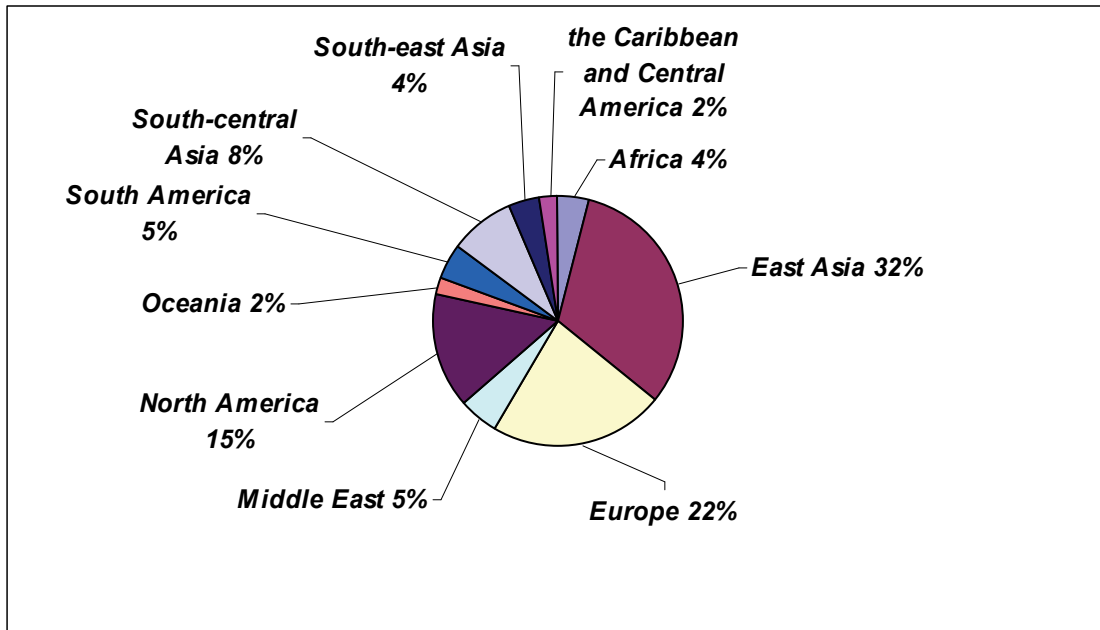
India	23	77	100
Indonesia	2	1	3
Iran		8	8
Ireland	5	9	14
Israel	4	23	27
Italy	5	37	42
Jamaica	7	6	13
Japan	7	41	48
Kazakhstan	1	1	2
Kenya	7	7	14
Korea, South	31	110	141
Kuwait		1	1
Laos		1	1
Latvia		1	1
Lebanon		6	6
Lichtenstein		1	1
Lithuania		2	2
Macau		1	1
Macedonia, The Republic of	1		1
Madagascar		2	2
Malaysia	9	6	15
Malta		1	1
Mauritius	2	1	3
Mexico	8	27	35
Moldova	1		1
Morocco	1		1
Nepal	1	2	3
Netherlands		3	3
New Zealand	2	8	10
Nicaragua	1		1
Nigeria	1	8	9
Norway	3	2	5
Pakistan	14	11	25
Panama	1		1
Peru	3	9	12
Philippines	3	4	7
Poland	5	8	13
Portugal		3	3
Romania	1	6	7
Russia	4	16	20
Saint Kitts and Nevis	1		1
Singapore	14	20	34
Slovakia	2		2
South Africa	5	3	8
Spain	1	17	18
Sri Lanka	6	5	11

Annual Report on International Students and Scholars at Yale University Fall 2004

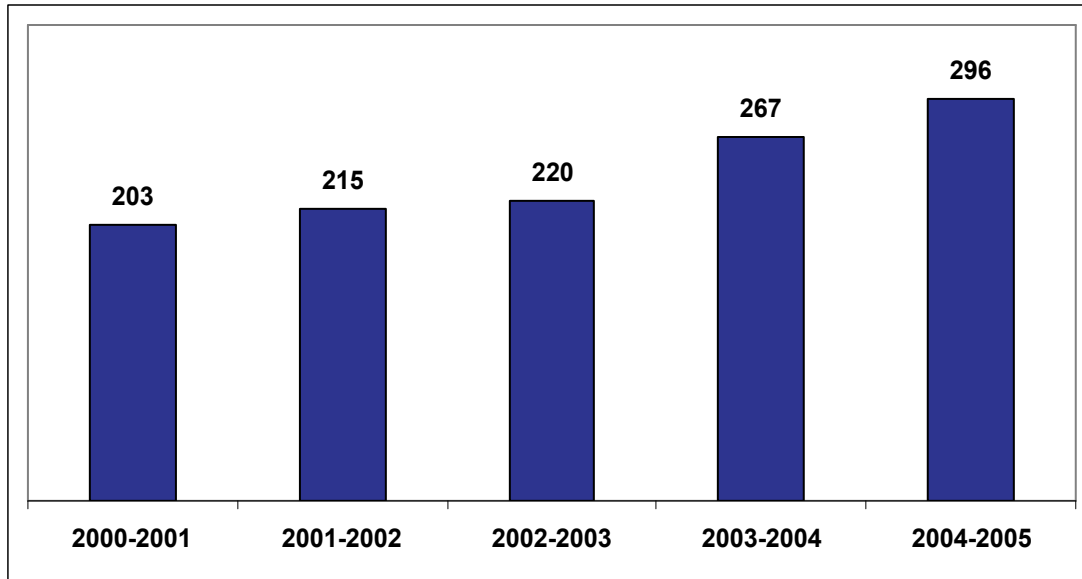
Continued from previous page

St. Lucia		2	2
Sweden		5	5
Switzerland	3	6	9
Taiwan	3	43	46
Tanzania	2	1	3
Thailand	6	5	11
Togo		1	1
Trinidad & Tobago	9	1	10
Turkey	20	24	44
Uganda		2	2
Ukraine	2	8	10
United Kingdom	13	49	62
Uruguay		3	3
Uzbekistan		2	2
Venezuela		3	3
Vietnam		2	2
Yugoslavia	6	3	9
Zambia	2		2
Zimbabwe	5	2	7
Grand Total	446	1313	1759

PERCENTAGE BY WORLD REGION FALL 2004

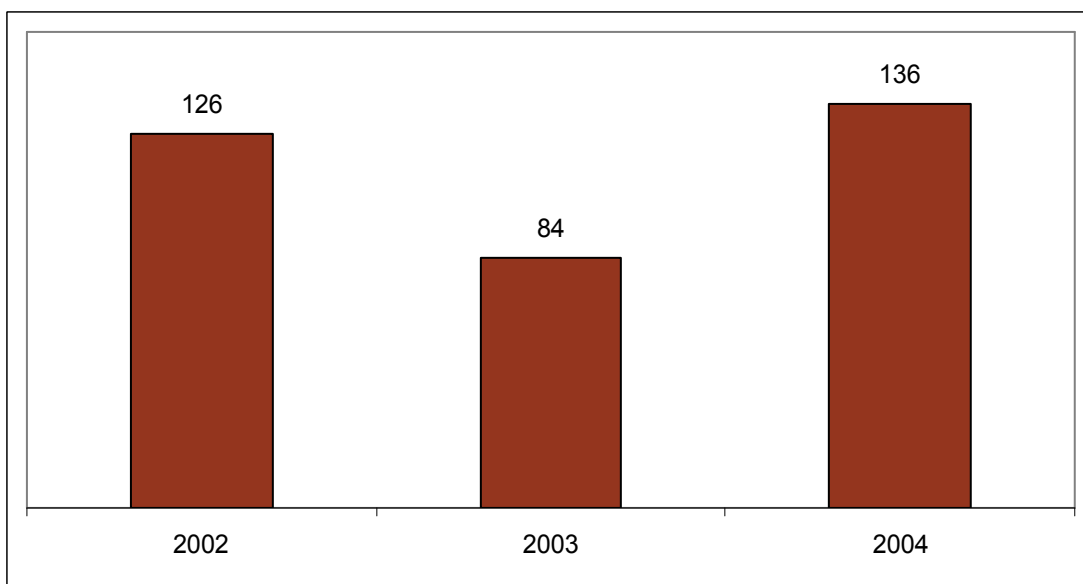


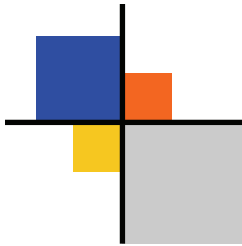
**OPTIONAL PRACTICAL TRAINING*
AFTER GRADUATION
FIVE YEAR TREND**



* International students in F or J status may remain in the U.S. under Yale's visa sponsorship after graduation for up to 12 months (18 months for J) to engage in training related to their program of study.

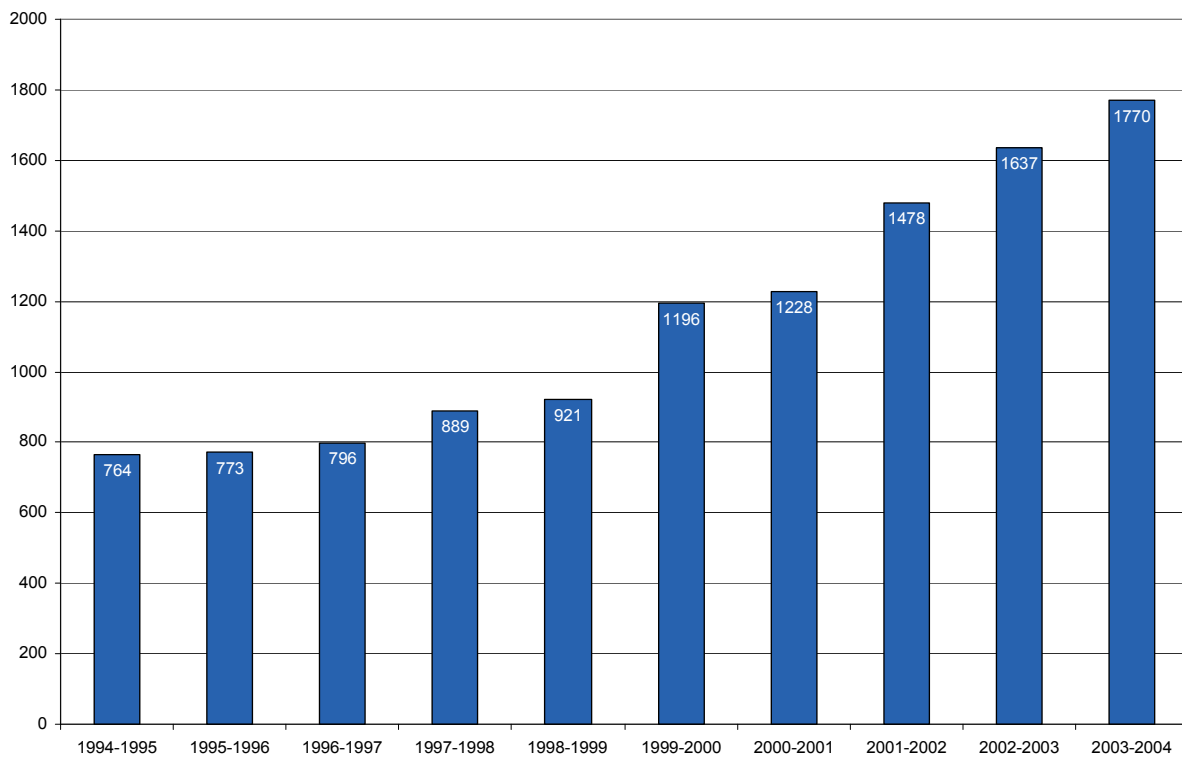
**STUDENTS AT ENGLISH LANGUAGE INSTITUTE
2002-2004 (SUMMER ONLY)**





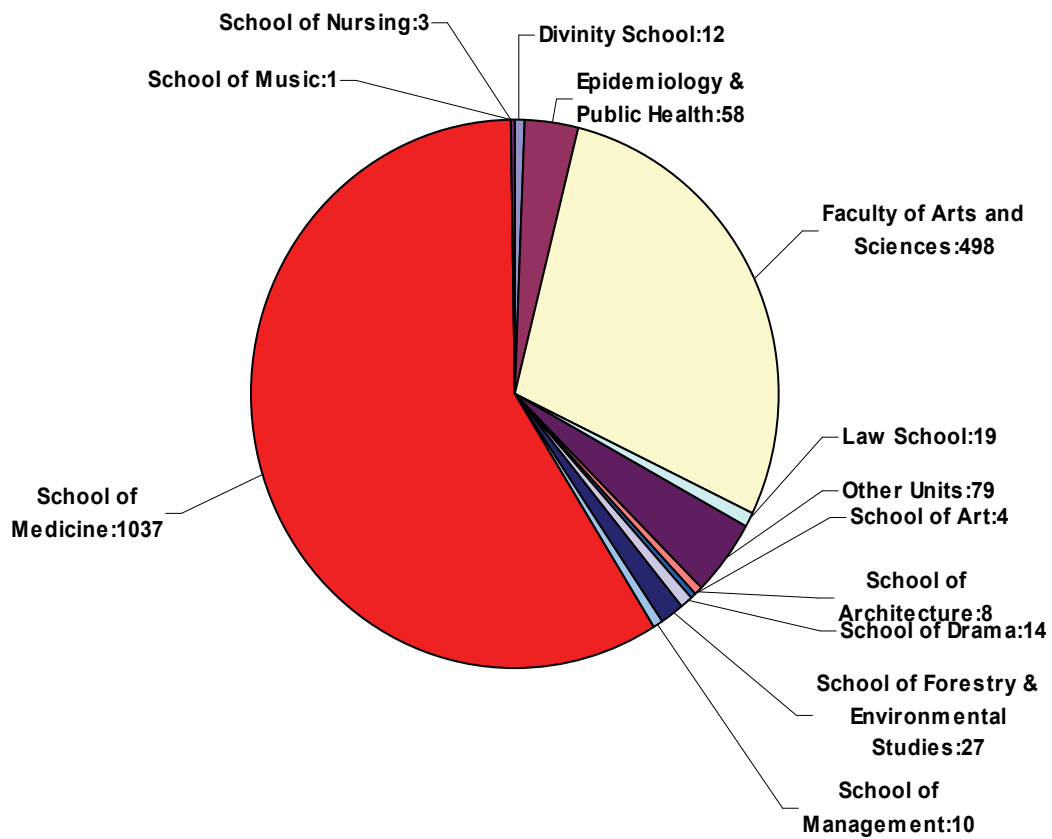
INTERNATIONAL SCHOLARS* AT YALE 2003-2004

INTERNATIONAL SCHOLARS 1994 - 2004



* Scholar statistics are compiled at the end of each academic year and represent individuals who have spent at least some part of the academic year at Yale in a non-immigrant classification. These figures do not include individuals who come to Yale in tourist or visitor status.

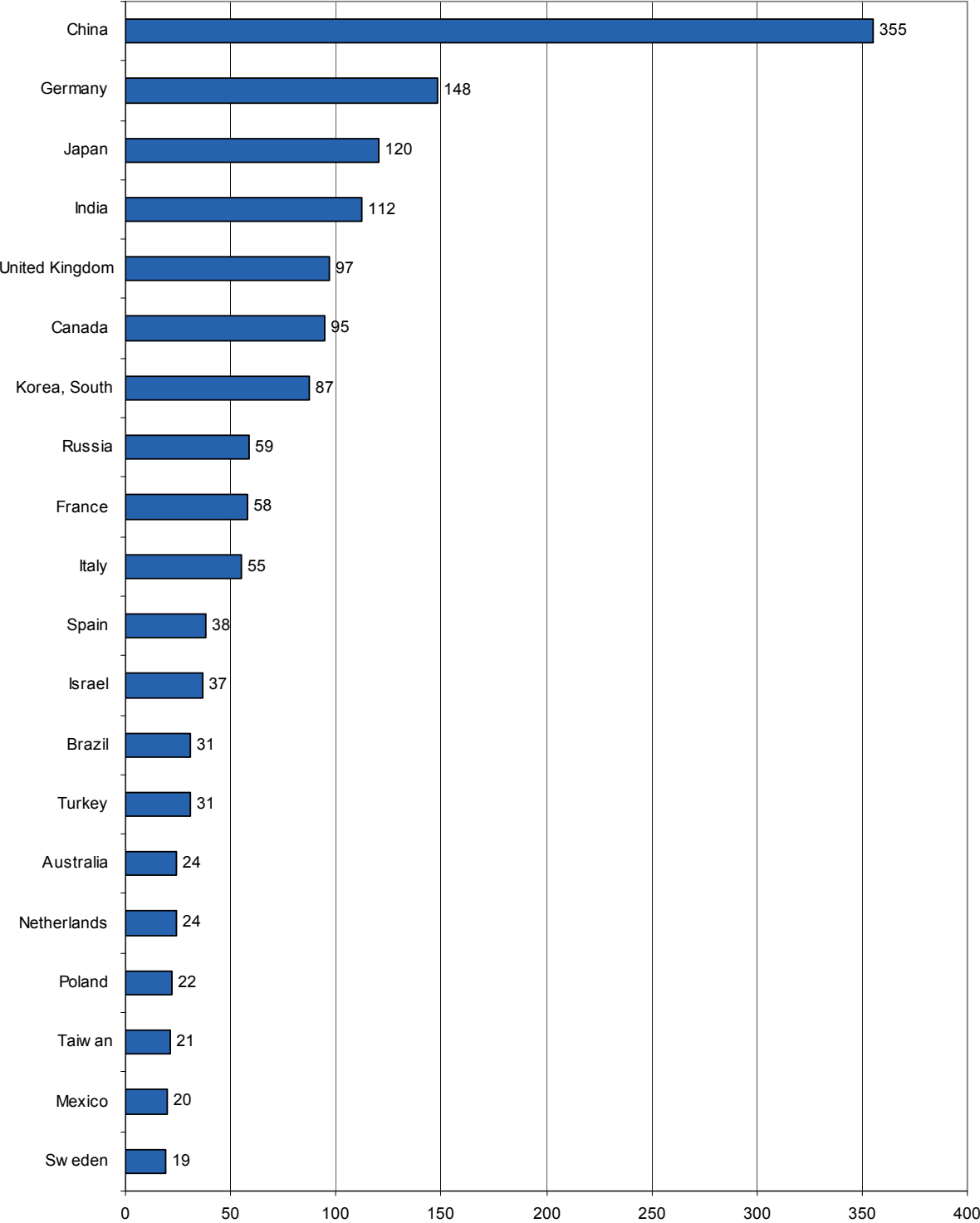
INTERNATIONAL SCHOLARS BY SCHOOL 2003-2004



**INTERNATIONAL SCHOLARS
BY DEPARTMENT OR UNIT
2003-2004**

Department	Total	Department	Total	Department	Total
African American Studies	2	French	9	Microbial Pathogenesis	24
African Studies	1	Genetics	45	Molecular Biophysics & Biochemistry	1
Agrarian Studies	3	Geology and Geophysics	26	Molecular Biophysics & Biochemistry	95
Anesthesiology	18	Germanic Languages and Literature	4	Molecular, Cellular & Developmental Biology	79
Anthropology	7	Haskins Labs	2	Music	1
Applied Physics	13	History	10	Music Department	4
Architecture	8	History of Art	6	Near Eastern Languages and Civilizations	5
Art	4	History of Medicine	1	Neurobiology	30
Astronomy	11	Immunobiology	44	Neurology	25
Athletics	1	Immunology	1	Neurosurgery	15
Beincke Library	10	Information Technology Services	10	Nursing	3
Biomedical Engineering	1	Institute for Social and Policy Studies	1	Obstetrics & Gynecology	52
British Art Center	13	Institute of Sacred Music	3	Ophthalmology & Visual Science	14
Cancer Center	5	Internal Medicine	82	Orthopaedics & Rehabilitation	18
Cardiology	4	Internal Medicine/Allergy	2	Pathology	33
Cell & Molecular Physiology	47	Internal Medicine/Cardiovascular	10	Peabody Museum	1
Cell Biology	51	Internal Medicine/Digestive Diseases	16	Pediatrics	30
Center for the Study of Globalization	23	Internal Medicine/Endocrinology	11	Pharmacology	72
Chemical Engineering	11	Internal Medicine/Geriatrics	1	Philosophy	3
Chemistry	55	Internal Medicine/Infectious Diseases	13	Physics	40
Child Study Center	21	Internal Medicine/Medical Oncology	5	Physiology	9
Classics	4	Internal Medicine/Nephrology	20	Political Science	15
Comparative Literature	3	Internal Medicine/Occupational & Env Medicine	2	Psychiatry	79
Comparative Medicine	2	Internal Medicine/Pulmonary	9	Psychology	16
Computer Science	12	Internal Medicine/Rheumatology	16	Religious Studies	10
Dermatology	4	Italian Language and Literature	4	Slavic Languages and Literature	1
Diagnostic Radiology	34	Lab Medicine	9	Sociology	15
Drama	14	Latin American and Iberian Studies	1	Southeast Asia Studies	1
East Asian Languages and Literature	7	Law School	19	Spanish and Portuguese	8
Ecology and Evolutionary Biology	14	Learning Center	1	Statistics	1
Economics	28	Linguistics	1	Surgery	50
Electrical Engineering	10	Management	12	Therapeutic Radiology	12
English	8	Mathematics	19	University Library	20
Epidemiology & Public Health	58	Mechanical Engineering	12	Yale Center for International & Area Studies	25
Forestry & Environmental Studies	27	Medical Informatics	1	Yale University Press	1

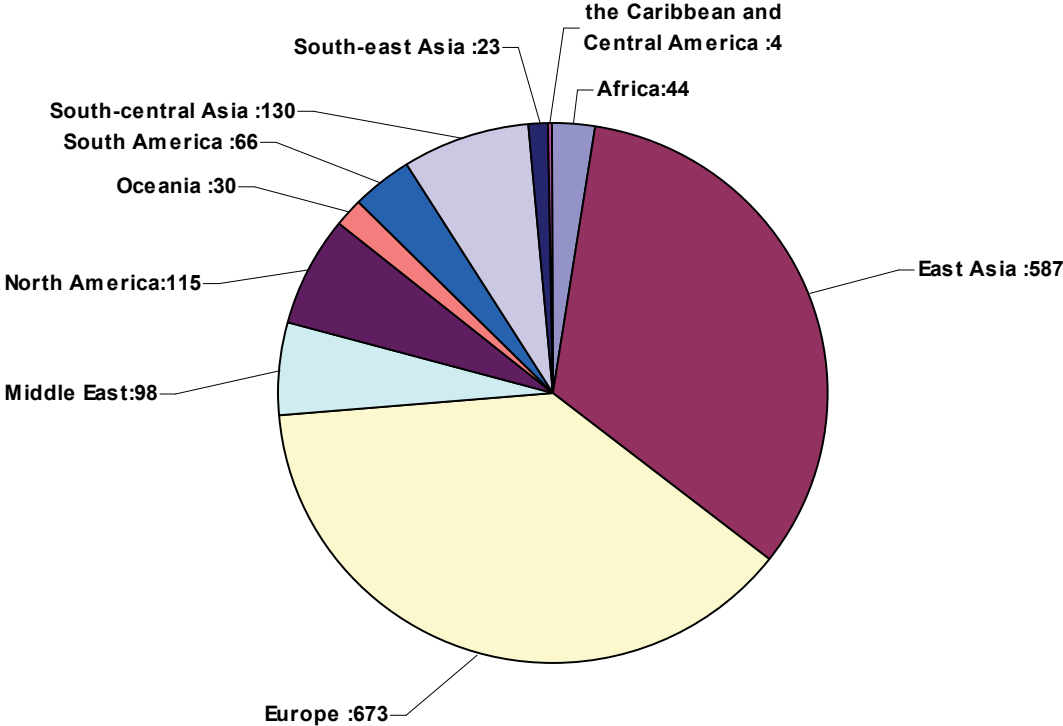
INTERNATIONAL SCHOLARS TOP TWENTY COUNTRIES 2003-2004



INTERNATIONAL SCHOLARS BY WORLD REGION 2003-2004

Africa	Total	South America	Total	Europe	Total
Algeria	1	Argentina	10	Albania	1
Burkina Faso	1	Brazil	31	Armenia	2
Cameroon	4	Chile	12	Austria	14
Egypt	3	Colombia	4	Belgium	7
Ghana	1	Ecuador	2	Bulgaria	7
Kenya	5	Peru	1	Croatia	5
Madagascar	3	Venezuela	6	Czech Republic	6
Morocco	3	Total	66	Denmark	10
Namibia	1			Estonia	1
Nigeria	7	Middle East	Total	Finland	5
Senegal	1	Bahrain	2	France	58
South Africa	6	Cyprus	4	Germany	148
Swaziland	1	Georgia	2	Greece	18
Tunisia	2	Iran	10	Hungary	11
Uganda	3	Iraq	1	Iceland	2
Zimbabwe	2	Israel	37	Ireland	8
Total	44	Jordan	5	Italy	55
		Lebanon	4	Latvia	1
		Syria	1	Lithuania	3
East Asia	Total	Turkey	31	Luxembourg	2
China	355	West Bank	1	Netherlands	24
Hong Kong	3	Total	98	Norway	8
Japan	120			Poland	22
Korea, South	87	the Caribbean & Central America	Total	Portugal	2
Mongolia	1	British Virgin Islands	1	Romania	13
Taiwan	21	Guatemala	1	Russia	59
Total	587	Panama	1	Slovakia	4
		Trinidad & Tobago	1	Slovenia	1
South-central Asia	Total	Total	4	Spain	38
Bangladesh	2			Sweden	19
India	112	South-east Asia	Total	Switzerland	12
Pakistan	11	Cambodia	1	Ukraine	3
Sri Lanka	2	Indonesia	3	United Kingdom	97
Uzbekistan	3	Philippines	4	Yugoslavia	7
Total	130	Singapore	6	Total	673
		Thailand	8		
		VietNam	1	Oceania	Total
North America	Total	Total	23	Australia	24
Canada	95			New Zealand	6
Mexico	20			Total	30
Total	115				

INTERNATIONAL SCHOLARS BY WORLD REGION, 2003-2004



**LEADING INSTITUTIONS HOSTING
INTERNATIONAL SCHOLARS*, 2002/03 & 2003/04**

Rank	Institution	City	State	2002/03	2003/04
1	Harvard University	Cambridge	MA	2403	3029
2	University of California - Los Angeles	Los Angeles	CA	2098	2130
3	University of California - Berkeley	Berkeley	CA	2365	1960
4	University of California - San Diego	La Jolla	CA	1817	1949
5	University of Pennsylvania	Philadelphia	PA	2082	1938
6	Columbia University	New York	NY	1890	1916
7	Yale University	New Haven	CT	1637	1770
8	University of Florida	Gainesville	FL	1335	1704
9	Stanford University	Stanford	CA	860	1642
10	University of California - San Francisco	San Francisco	CA	1600	1600
11	Massachusetts Institute of Technology	Cambridge	MA	1573	1567
12	University of Washington	Seattle	WA	1556	1557
13	The Ohio State University, Main Campus	Columbus	OH	1423	1520
14	University of California - Irvine	Irvine	CA	597	1478
15	University of Illinois at Urbana-Champaign	Champaign	IL	1694	1427
16	University of California - Davis	Davis	CA	1109	1356
17	University of Michigan - Ann Arbor	Ann Arbor	MI	1342	1291
18	University of Southern California	Los Angeles	CA	1214	1280
19	Cornell University	Ithaca	NY	1236	1242
20	University of Minnesota - Twin Cities	Minneapolis	MN	1252	1241
21	Washington University	St. Louis	MO	1246	1195
22	University of Wisconsin - Madison	Madison	WI	1131	1177
23	University of Illinois at Chicago	Chicago	IL	900	1154
24	Duke University & Medical Center	Durham	NC	1117	1120
25	Boston University	Boston	MA	975	1080
26	University of North Carolina at Chapel Hill	Chapel Hill	NC	1024	1047
27	University of Maryland College Park	College Park	MD	861	1038
28	University of Iowa	Iowa City	IA	865	986
29	Michigan State University	East Lansing	MI	910	977
30	University of Texas at Austin	Austin	TX	1013	946

* Date Source: Open Doors 2004: Report on International Educational Exchange

Published by Institute of International Education

IVY LEAGUE AND OTHER INSTITUTIONS

BROWN UNIVERSITY

COLUMBIA UNIVERSITY

CORNELL UNIVERSITY

DARTMOUTH COLLEGE

HARVARD UNIVERSITY

MASSACHUSETTS INSTITUTE OF TECHNOLOGY

PRINCETON UNIVERSITY

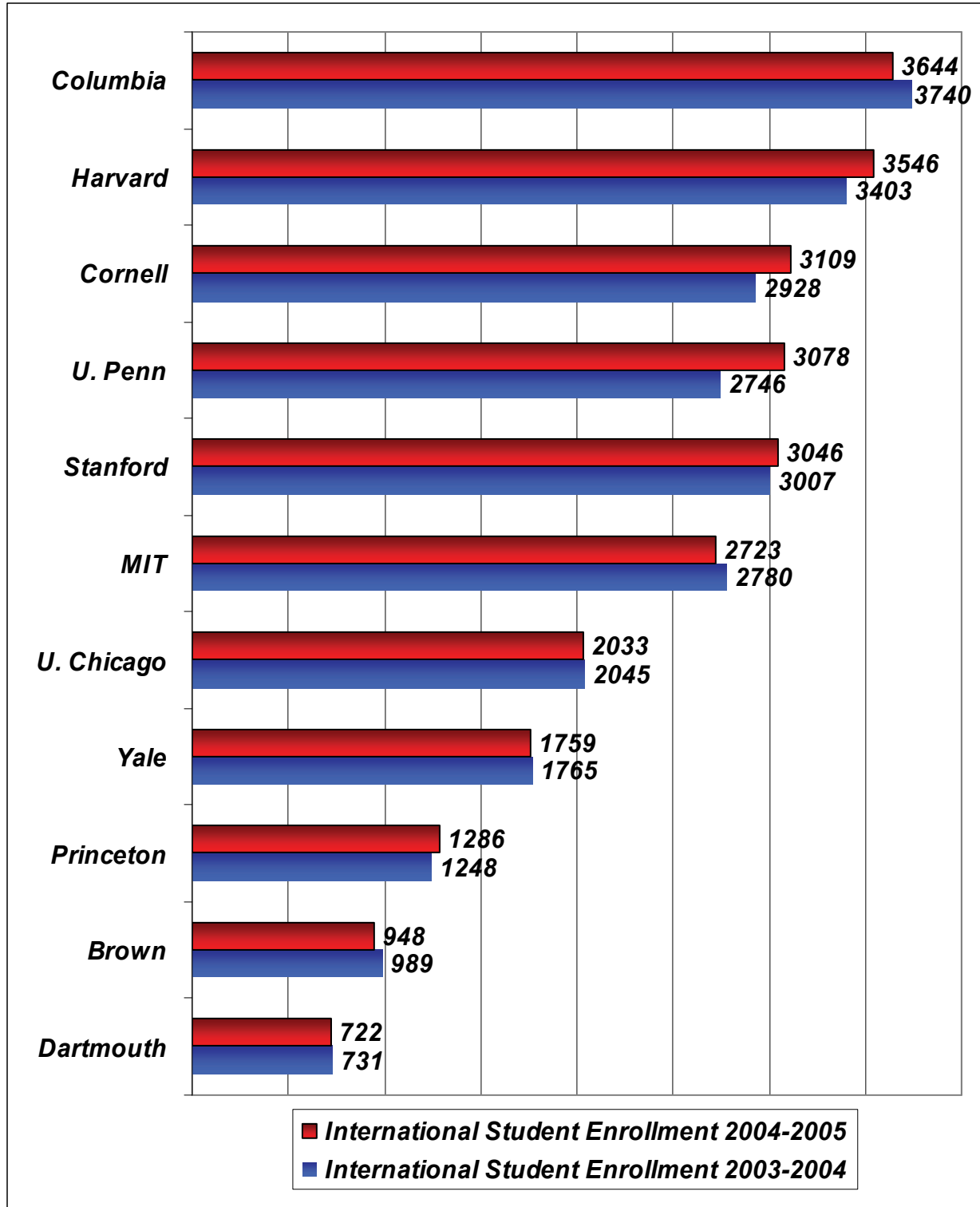
STANFORD UNIVERSITY

UNIVERSITY OF PENNSYLVANIA

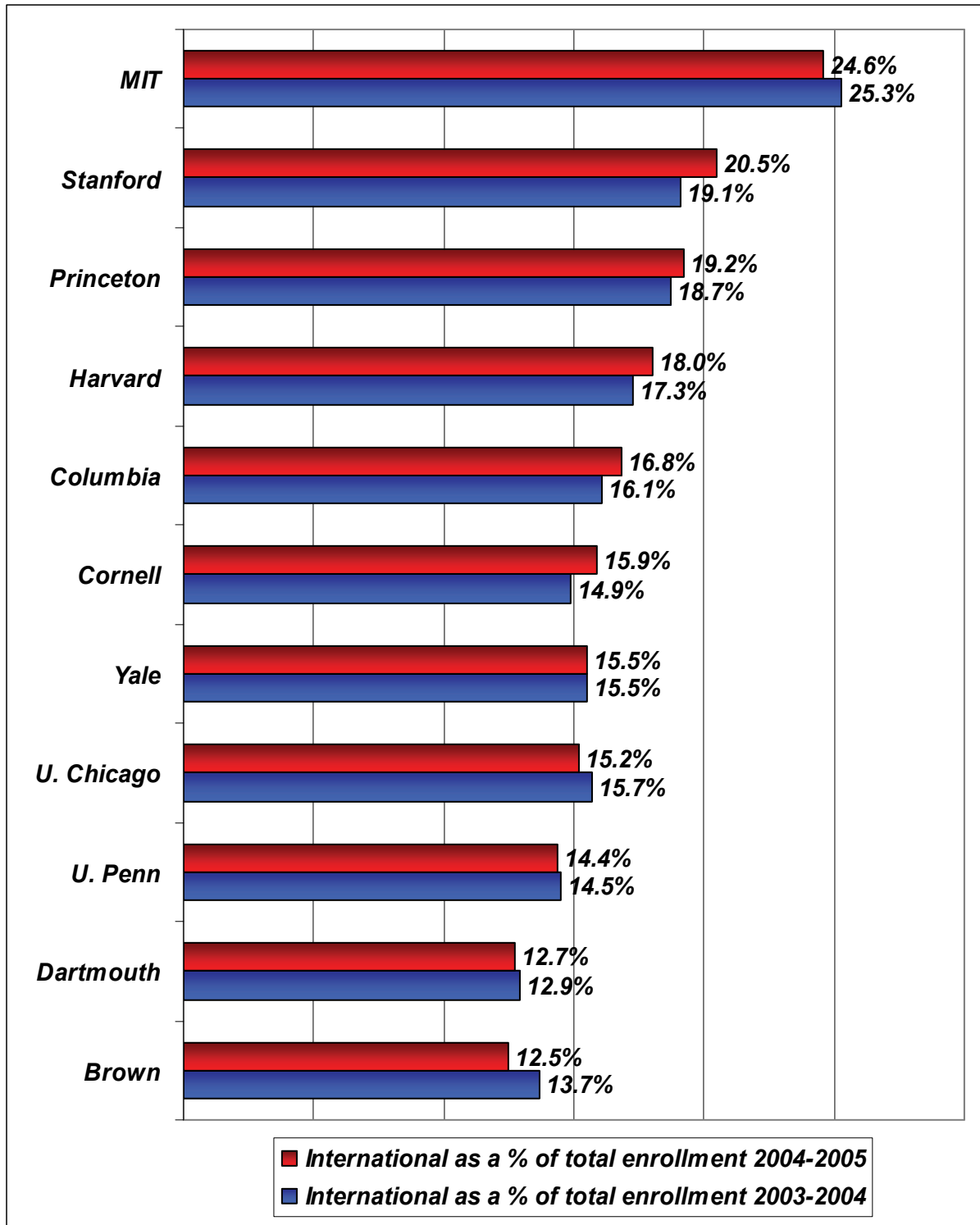
UNIVERSITY OF CHICAGO

YALE UNIVERSITY

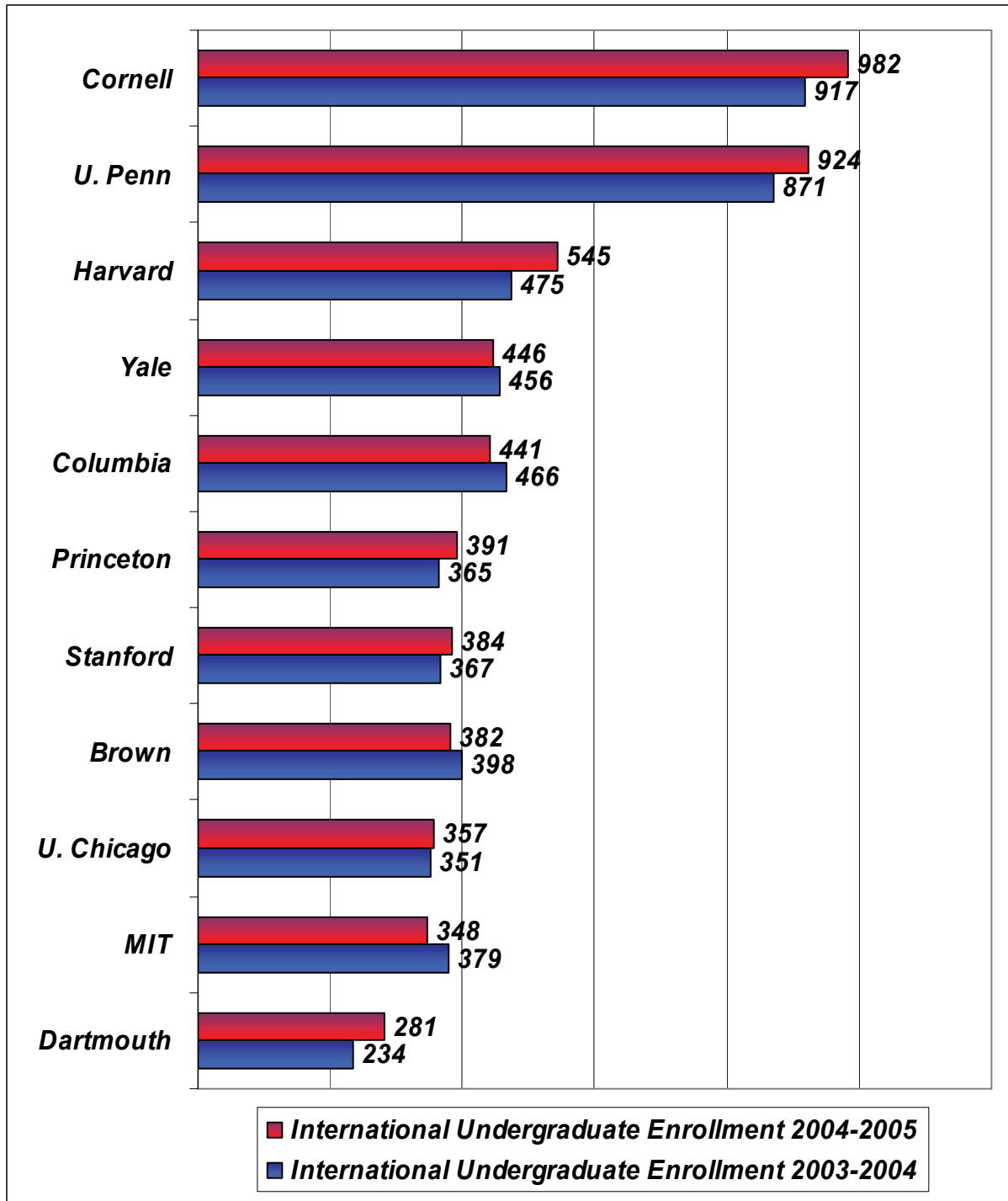
INTERNATIONAL STUDENT ENROLLMENT AT IVY LEAGUE AND OTHER INSTITUTIONS FALL 2004



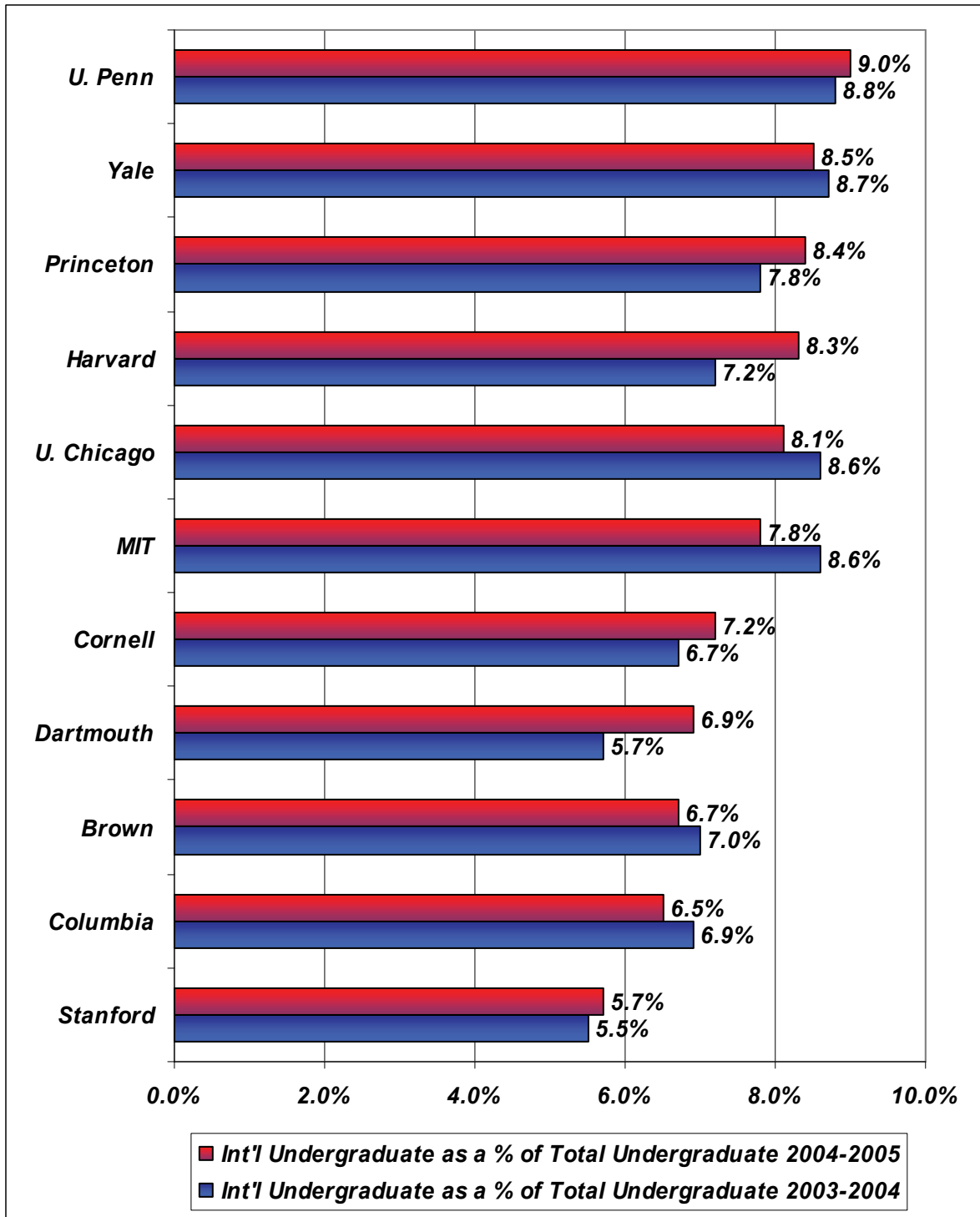
INTERNATIONAL STUDENTS AS A PERCENT OF ALL STUDENTS FALL 2004



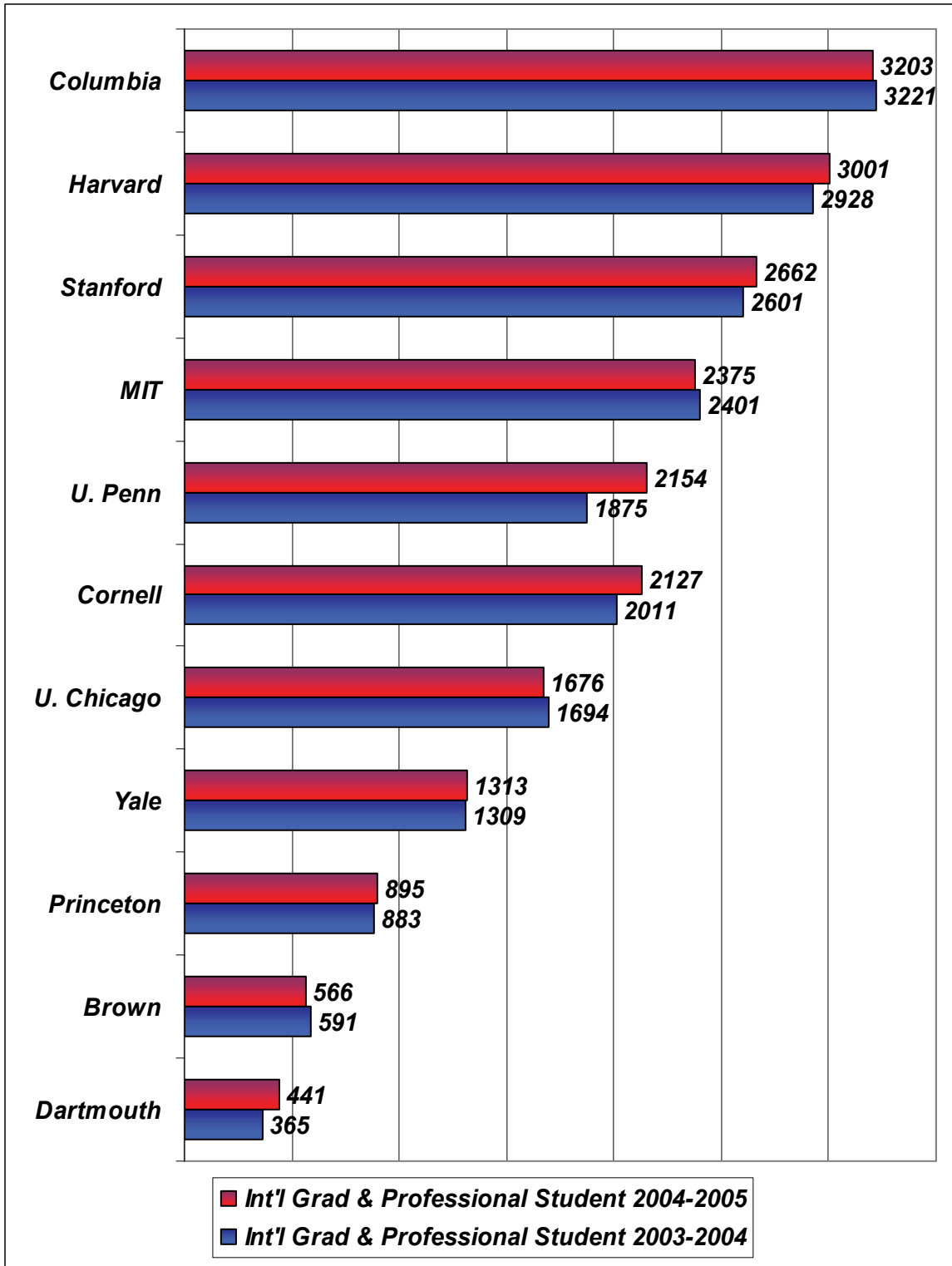
INTERNATIONAL UNDERGRADUATE STUDENT ENROLLMENT, FALL 2004



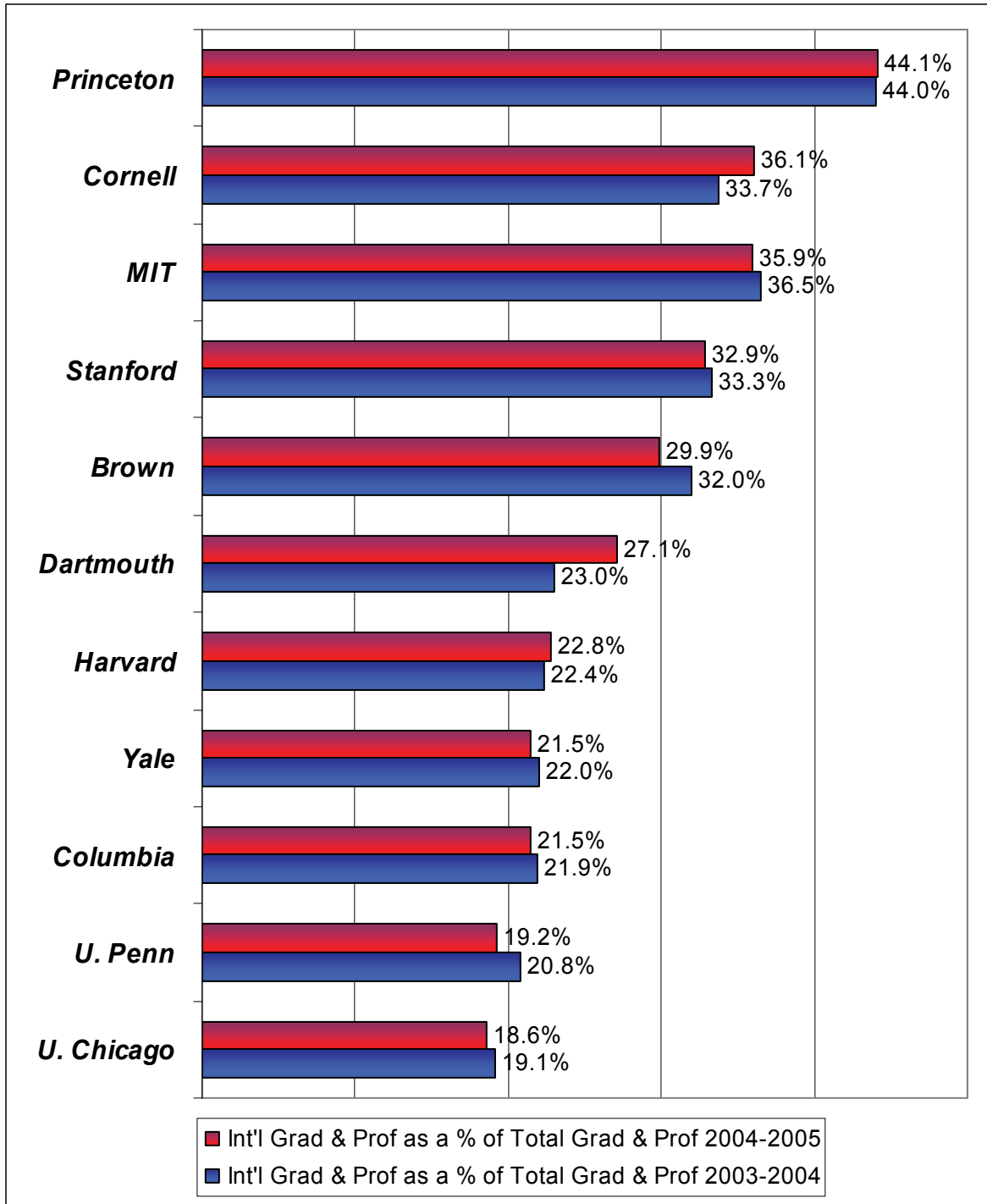
INTERNATIONAL UNDERGRADUATE AS A PERCENT OF TOTAL UNDERGRADUATE FALL 2004



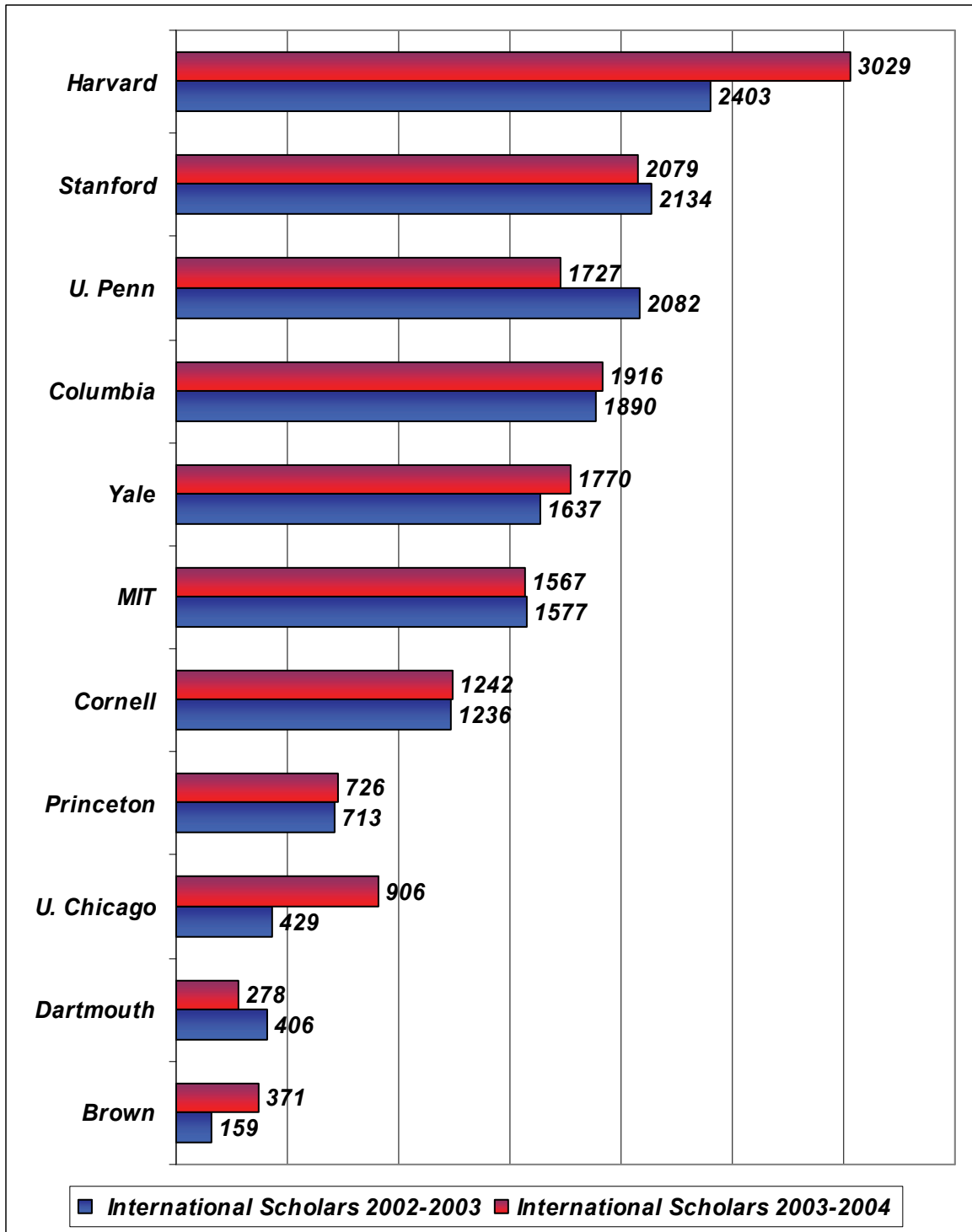
INTERNATIONAL GRADUATE & PROFESSIONAL STUDENT ENROLLMENT FALL 2004



INT'L GRADUATES & PROFESSIONALS AS A PERCENT OF TOTAL GRADUATES & PROFESSIONALS FALL 2004



INTERNATIONAL SCHOLARS AT IVY LEAGUE AND OTHER INSTITUTIONS FALL 2003-2004



INTERNATIONAL SCHOLARS AT IVY LEAGUE AND OTHER INSTITUTIONS FALL 2003-2004

Non-Immigrant Visa Classification					
<i>Institution</i>	<i>J-1</i>	<i>H-1</i>	<i>O-1</i>	<i>Other Visa Types</i>	<i>Total</i>
Brown University	273	96	2	*	371
Columbia University	978	784	70	84	1916
Cornell University	713	302	8	219	1242
Dartmouth College	114	113	4	47	278
Harvard University	2006	838	50	135	3029
Massachusetts Institute of Technology	813	411	18	325	1567
Princeton University	415	224	9	78	726
Stanford University	1538	530	0	11	2079
University of Chicago	600	306	*	*	906
University of Pennsylvania	684	1020	16	7	1727
Yale University	1031	647	39	53	1770

Immigrant Visa Application Filed

<i>Institution</i>	<i>EB1</i>	<i>EB2</i>	<i>EB3</i>	<i>Other Preferences</i>	<i>Total</i>
Brown University	*	*	*	*	*
Columbia University	24	2	3		29
Cornell University	18	12			30
Dartmouth College	*	*	*	*	20
Harvard University	9	5			14
Massachusetts Institute of Technology	10	5	1		16
Princeton University	14				14
Stanford University	5	13			18
University of Chicago	*	*	*	*	*
University of Pennsylvania	21	26	12	4	63
Yale University	22	17	1		40

*Figures not reported, not available, or not applicable

*Dartmouth does not file PR cases. The approximately 20 individuals approved for college PR sponsorship were referred to an attorney for filing

OISS PROGRAMS: PROVIDING ON-GOING SUPPORT TO YALE'S INTERNATIONAL COMMUNITY

By partnering with many other departments across campus, including the McDougal Center for Graduate Student Life of the Graduate School of Arts and Sciences, the Offices of Postdoctoral Affairs and the Office of International Affairs, OISS continues to expand its programs, resources and support for international students and scholars. Realizing that "one size does not fit all," the office seeks to offer a variety of programs knowing that, for example, some will be of interest to Yale College freshmen and others to international postdoctoral scholars. The list below highlights some of OISS' regular offerings. In addition to the more formal programs, OISS makes a priority of being available to individual students and scholars. OISS staff provide a walk-in advising service, speaking with numbers of students and scholars each day about a wide variety of concerns: housing, personal and legal matters, present and future employment options, and of course, immigration regulations.

Print or On-Line Resources

- OISS Web site. A comprehensive Web site with a vast array of resources and links for international students and scholars as well as links to departments that host and hire international scholars, (www.oiss.yale.edu)
- Handbook for International Students and Scholars. This 90-page handbook was first written and compiled in July 2000 to assist with issues of settling in, social and cultural adjustment, culture shock, academic issues, health care, and more. The handbook is currently in its fifth edition.
- OISS-L Electronic Newsletter. Begun in the fall of 1999, OISS announcements are now sent weekly with a regular format and more comprehensive content. University administrators have been encouraged to join this group as a way of staying alert to the issues important to the international community.
- Yale International E-Group. This interactive e-group of over 2500 members (doubled since 2002) has voluntary enrollment and serves as an informal way to connect international graduate and professional students and visiting scholars across the lines drawn by schools, departments and lab walls.
- ISPY Handbook: Passport to Yale & New Haven. Funded through a grant from the U.S. State Department, this is a comprehensive handbook written by international spouses, for international spouses and partners. A companion website, whose development was also funded by the DOS grant, resides at www.groups.msn.com/ISPYInternationalSpousesandPartnersatYale/welcome1.msnw

Orientation Programs

- Undergraduate Orientation. OIS (Orientation for International Students) – Run by Yale College international student counselors, these three days of activities prior to regular freshman orientation are designed to introduce new Yale College international students to Yale and New Haven and provide the opportunity to meet other new students.
- Orientation Program for Graduate and Professional International Students. A month-long series of events and activities that complement the orientation activities of the graduate and professional schools, which includes information sessions, social gatherings and culminates in the annual OISS/YCIAS reception for international students and scholars.
- Orientation for International Spouses & Partners at Yale. Begun as a two hour meeting with OISS staff, this orientation program is now a three-day event in the fall organized and run by the members of International Spouses & Partners at Yale (ISPY).
- Post-Doc and Visiting Scholar Orientation. First, offered in the spring term 2005, OISS with the Office of International Affairs organizes bi-weekly orientation programs and campus tours for newly arrived international scholars. In addition, four times each academic year, OISS offers an informal reception, which includes a short orientation program. The latter is co-sponsored by the McDougal Center for Graduate Student Life and the Offices of Post Doctoral Affairs.

Annual Report on International Students and Scholars at Yale University Fall 2004

Year-round Programs

- OISS English Conversation Groups. Begun in 2000 as one weekly group, the OISS English Conversation Program has expanded to include seven groups each week. Facilitated by volunteers and OISS staff, these groups, which attract over one hundred international graduate students and scholars and their dependents each week, offer an opportunity for informal English conversation practice.
- International Coffee Hour. These monthly social gatherings (co-sponsored by OISS and the McDougal Center) are hosted by a different student group each month giving each group an opportunity to introduce the culture and cuisine of their homelands.
- U.S. Culture Exploration Workshops, including: U.S. Academic Culture, Tips For Academic Success, An Introduction to U.S. Culture, Dealing with Culture Shock, Dangerous English, Race and Ethnicity, Friendship and Friendliness, and Not Your Ordinary Closet: a cross-cultural GLBTQ discussion. The informal format of the program provides participants with a comfortable place to ask questions not only about the cultural differences and norms in the U.S. classroom, but also matters relating directly to surviving and thriving at Yale.
- Hosting Program. In the summer of 2004, OISS initiated a host family program for Yale College freshmen. About 30 international students in the Class of 2008 were matched with local families and many have gotten to know each other over the course of this semester. In addition, OISS has for several years now, matched more than 60 students with local hosts for Thanksgiving dinner.
- Whitney Conversation Partners. Begun in spring 2004 by a community volunteer, this program arranges one-on-one language and culture exchange between the Whitney Center retirement community volunteers and Yale students, scholars and their dependents.
- International Spouses & Partners at Yale (ISPY). Started by a group of spouses in Fall 2000, ISPY now has over one hundred members on its roster. ISPY activities include: welcoming newly arrived spouses and partners, monthly meetings, weekly craft circle and coffee hours, monthly luncheons, ISPY at the Yale Repertory Theater, and a summer hiking group.
- Surviving a New England Winter and Coat Give Away. For the second year, the University Health Service, McDougal Center, Office of International Affairs, and OISS have co-sponsored this program and provided gently used coats to over 100 international students and scholars.
- International Programming Fund. This fund is used to support student and scholar nationality clubs at Yale.
- OISS Road Trips. Several times each semester OISS organizes outings to nearby sites of interest, including New York City walking trips, trips to a Broadway show and to see the holiday lights, as well as trips to the Thimble Islands, Newport, West Point and Boston.
- Third Annual International Cultural Festival. Held this year on April 9, in collaboration for the second year with APO's Communitarity Day, this event attracted more than 600 visitors and involved numerous student organizations and performing groups.

Annual Report on International Students and Scholars at Yale University Fall 2004

OISS Staff

Ann Kuhlman, *Director*

Janice Pinkard, *Assistant Director/Adviser*

Sarah Solarski, *Assistant Director/Adviser*

Monica Weeks, *Assistant Director/Adviser*

Warrena Wilkinson, *Resource Coordinator*

Gang Wang, *Associate Director*

Susan Buydos, *Assistant Director/Adviser*

Elisabeth Kennedy, *Assistant Director/Adviser*

Sarah Henderson, *Senior Administrative Assistant*

Margaret Valentino, *Senior Administrative Assistant*

OFFICE OF INTERNATIONAL STUDENTS AND SCHOLARS
SUITE 201, 246 CHURCH STREET
YALE UNIVERSITY
NEW HAVEN, CT 06510

TELEPHONE: (203) 432-2305

FAX: (203) 432-7166

Email: oiss@yale.edu

Web: www.oiss.yale.edu

An electronic copy of this report can be downloaded at: <http://www.oiss.yale.edu/about/stats.htm>