

**ANNUAL REPORT**  
**INTERNATIONAL STUDENTS AND SCHOLARS**  
**AT YALE UNIVERSITY**  
**2005–2006**



**PREPARED BY**

**OFFICE OF INTERNATIONAL STUDENTS AND SCHOLARS**

## TABLE OF CONTENTS

<b>Introduction</b>	3
<b>International Students</b>	
<b>Comparative Data from 1996-2005</b>	
Annual Enrollment	4
Percentages of Enrollment	4
Enrollment by School	5
<b>Fall 2005 Data</b>	
By School	5
By School and Gender	6
Percentage of Enrollment by School	6
By World Region	7-16
Top Ten Countries	17
By Country of Citizenship	18-20
Optional Practical Training	21
English Language Institute Enrollments	21
<b>International Scholars</b>	
<b>International Scholars, 1995—2005</b>	22
<b>Academic Year 2004-2005</b>	
By School	23
By Department or Unit	24
Top Twenty Sending Countries	25
By Country and World Region	26
By World Region	27
<b>Leading Institutions Hosting International Scholars</b>	28
<b>Ivy League and Other Institutions</b>	29
International Student Enrollment Fall 2005	30
International Student as a Percent of All Students Fall 2005	31
International Undergraduate Student Enrollment Fall 2005	32
International Undergraduate Student as a Percent of All Students Fall 2005	33
International Graduate & Professional Student Enrollment Fall 2005	34
Int'l Graduates & Professionals as a Percent of Total Graduates & Professionals Fall 2005	35
International Scholars at Ivy League And Other Institutions Fall 2003-2005	36
<b>OISS Programs and Services</b>	37

## INTRODUCTION

The Office of International Students and Scholars (OISS) is pleased to provide the Yale University community with our enhanced annual report on international student and scholar statistics\*. Included in this report are the international student enrollment figures for Fall 2005 and the international scholar figures for the academic year 2004-2005. We have also included data on the enrollment trends at Yale University for the last ten years, as well as comparative data from national international student and scholar statistics and from our Ivy League colleagues.

The presence of 1,770 international students (representing nearly 15.2% of the total full-time student University enrollment) and over 1874 international scholars represents the largest international community in Yale's history and reflects the significant growth of these populations in the last fifteen years. The last decade has seen an overall increase of almost 30% (from 1,383 in 1996-97 to 1,770 in 2005-06) in the total number of international students at Yale. In the last fifteen years Yale College has experienced nearly a tripling in the number of international student enrollments (from 164 in 1989-90 to 446 in 2004-2005). Since the fall of 2001 Yale international student enrollment figures have remained constant, declining only slightly (0.3%) in the fall of 2004.

In addition, Yale University continues to see significant annual increases in the numbers of international scholars, more than doubling the numbers (from 773 in 1995-96 to 1,784 in 2004-2005.) These include individuals who come to Yale to assume research and teaching responsibilities, to collaborate with colleagues or to observe in laboratory, classroom or clinical settings. This does not include the large number of international visitors who come to Yale for very short periods of time to give lectures and participate in seminars and symposia.

Managing the international student and scholar data has become increasingly complicated with the additional reporting requirements imposed by the Department of Homeland Security's SEVIS program. I am grateful to my colleagues for their diligence in working to improve the quality of this data and am particularly grateful for the efforts of Gang Wang and Sarah Solarski in compiling this report. We welcome your suggestions on what other data might be included in future publications of this annual report.

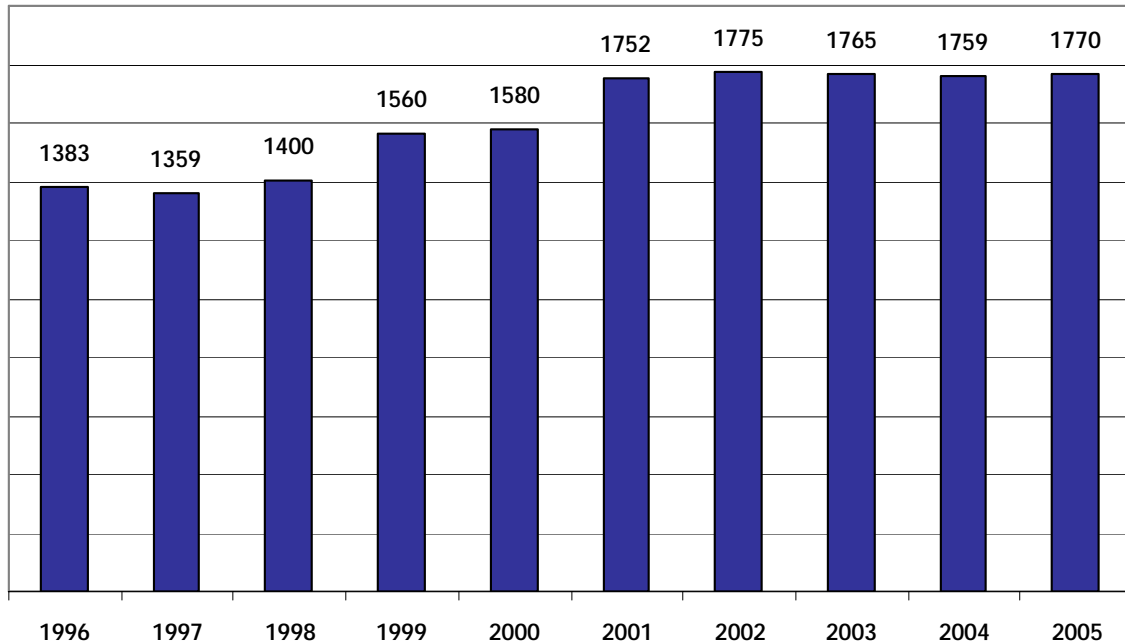
Ann Kuhlman

May 2006

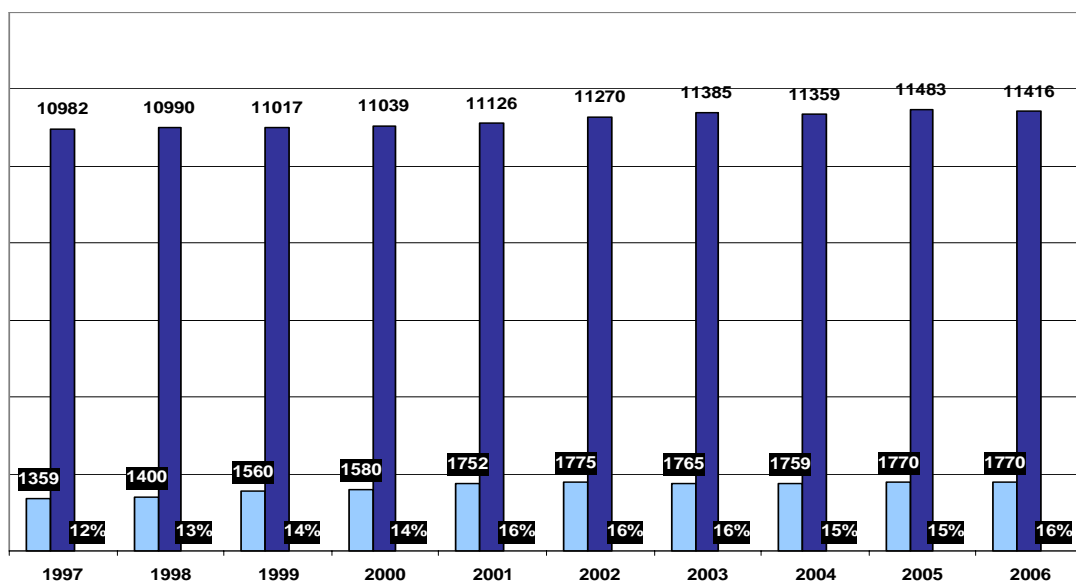
---

\*The international student and scholar counts at this report include individuals at Yale on non-immigrant visas, not including persons who come Yale in tourist status (B1, B2, WB an WT). These figures do not include US citizens or permanent resident status or those who have applications pending for U.S. permanent resident status.

## INTERNATIONAL STUDENTS ANNUAL ENROLLMENT, 1996-2005



## INTERNATIONAL STUDENTS PERCENTAGE OF YALE TOTAL ENROLLMENT

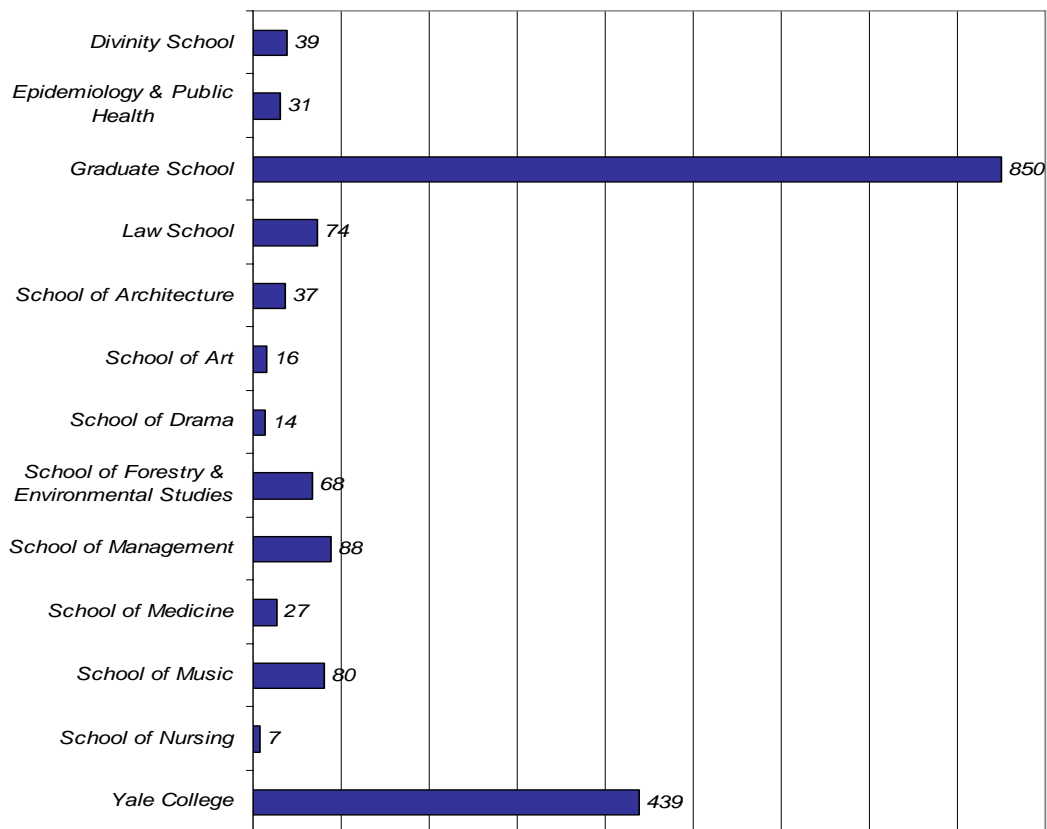


## INTERNATIONAL STUDENTS BY SCHOOL\*, FALL 2005

School	1996	1997	1998	1999	2000	2001	2002	2003	2004	2005
Divinity School	14	21	15	25	39	51	44	47	47	39
Epidemiology & Public Health	47	45	31	43	21	23	24	24	27	31
Graduate School	629	615	666	752	726	794	788	819	864	850
Law School	35	49	44	53	66	70	66	63	55	74
School of Architecture	27	25	25	34	32	43	48	34	27	37
School of Art	13	12	15	15	16	19	11	14	16	16
School of Drama	16	14	13	14	20	25	21	18	14	14
School of Forestry & Environmental Studies	44	49	52	55	66	70	73	57	60	68
School of Management	126	100	90	109	128	167	183	137	102	88
School of Medicine	58	14	15	22	14	21	26	25	23	27
School of Music	79	76	68	77	72	73	68	62	68	80
School of Nursing	2	4	5	5	10	9	8	9	10	7
Yale College	293	335	361	356	370	387	415	456	446	439
<b>Total</b>	<b>1383</b>	<b>1359</b>	<b>1400</b>	<b>1560</b>	<b>1580</b>	<b>1752</b>	<b>1775</b>	<b>1765</b>	<b>1759</b>	<b>1770</b>

Note: \*This figures include special and non-degree students \*\*64 of 850 graduate students are non-degree students

## INTERNATIONAL STUDENTS BY SCHOOL, FALL 2005



## INTERNATIONAL STUDENTS BY SCHOOL AND GENDER, FALL 2005

School	Female	Male	Total
Divinity School	16	23	39
Epidemiology & Public Health	22	9	31
Graduate School	337	513	850
Law School	33	41	74
School of Architecture	17	20	37
School of Art	8	8	16
School of Drama	11	3	14
School of Forestry & Environmental Studies	33	35	68
School of Management	21	67	88
School of Medicine	17	10	27
School of Music	50	30	80
School of Nursing	7		7
Yale College	202	237	439
<b>Total</b>	<b>774</b>	<b>996</b>	<b>1770</b>

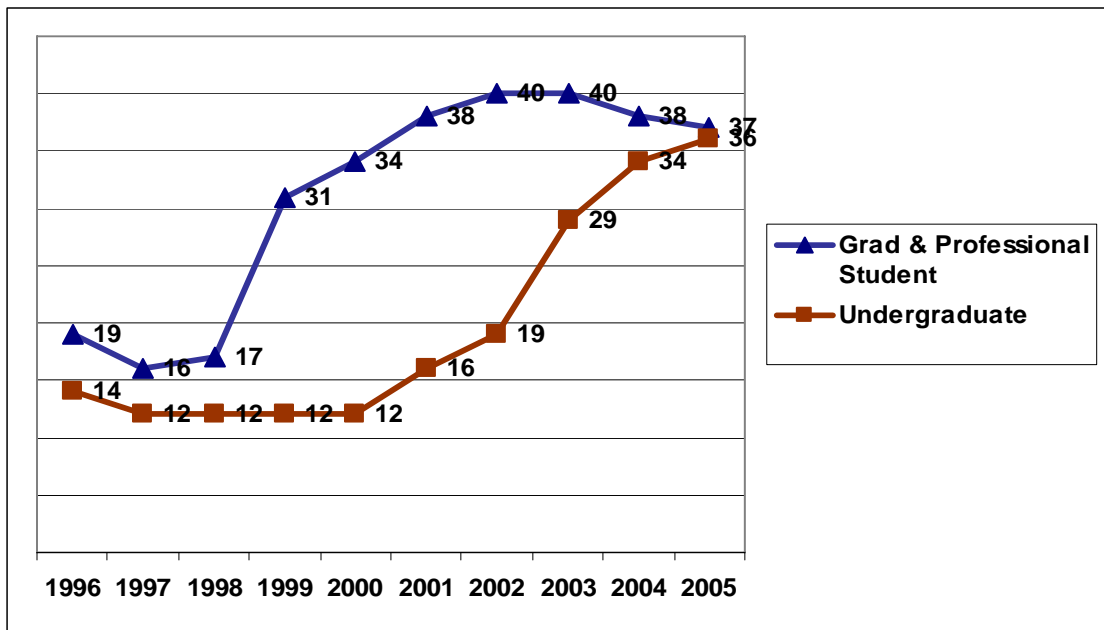
## INTERNATIONAL STUDENTS AS A PERCENTAGE OF SCHOOL ENROLLMENT FALL 2005

School	Int'l Students	Total Students	Percentage of Total Enrollment
Divinity School	39	349	11.2%
Epidemiology & Public Health	31	266	11.7%
Graduate School	850	2522	33.7%
Law School	74	669	11.1%
School of Architecture	37	199	18.6%
School of Art	16	118	13.6%
School of Drama	14	199	7.0%
School of Forestry & Environmental Studies	68	254	26.8%
School of Management	88	444	19.8%
School of Medicine - MD	27	443	8.0%
School of Music	80	214	37.4%
School of Nursing	7	296	2.4%
Yale College	439	5409	8.1%
<b>TOTAL</b>	<b>1770</b>	<b>11382</b>	<b>15.6%</b>

## AFRICA: STUDENT ENROLLMENT, FALL 2005

Country	Undergraduate	Graduate	Total
Botswana	1	1	2
Egypt		3	3
Ethiopia	1		1
Ghana	7	7	14
Guinea		1	1
Kenya	9	4	13
Madagascar		1	1
Mauritius	2	1	3
Morocco	1		1
Nigeria		11	11
South Africa	5	2	7
Tanzania	2	1	3
Togo		1	1
Uganda		1	1
Zambia	1	1	2
Zimbabwe	7	2	9
<b>Total</b>	<b>36</b>	<b>37</b>	<b>73</b>

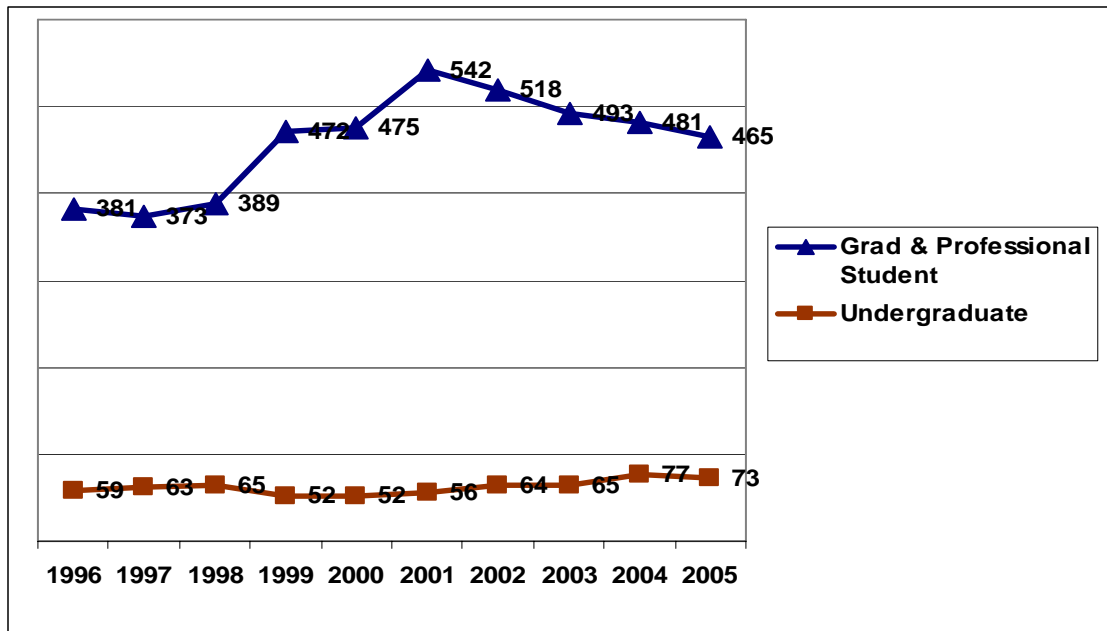
## AFRICA REGIONAL TRENDS 1996-2005



## EAST ASIA: STUDENT ENROLLMENT, FALL 2005

Country	Undergraduate	Graduate & Professional Student	Total
China	28	272	300
Korea, South	29	106	135
Japan	9	38	47
Taiwan	2	38	40
Hong Kong	5	9	14
Macau		1	1
Mongolia		1	1
<b>Total</b>	<b>73</b>	<b>465</b>	<b>538</b>

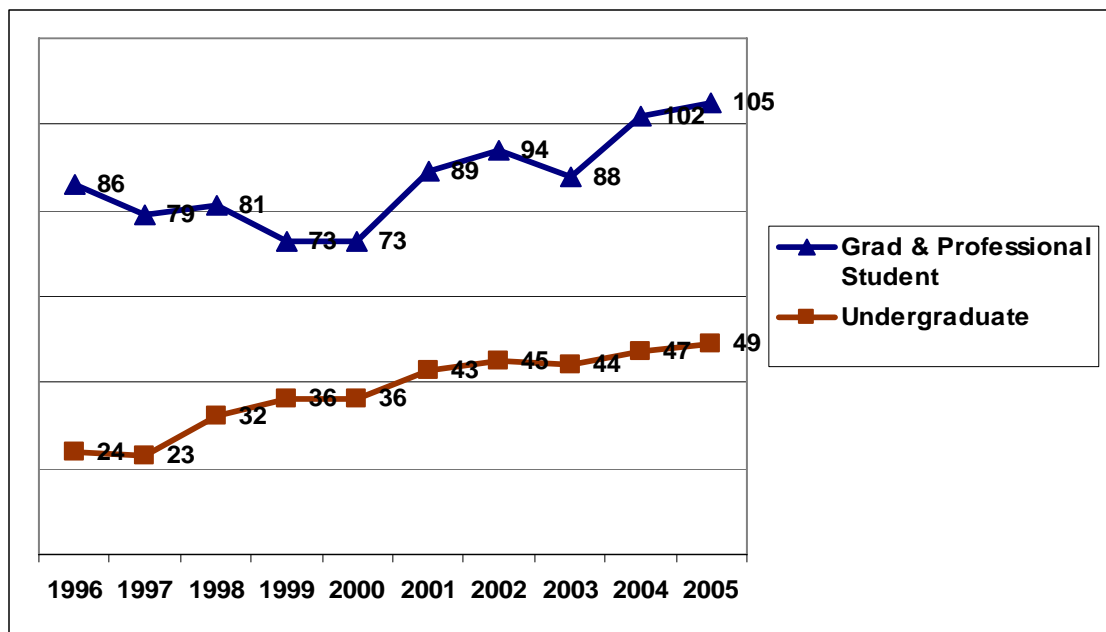
## EAST ASIA REGIONAL TRENDS 1996-2005



## SOUTH CENTRAL ASIA: STUDENT ENROLLMENT FALL 2005

Country	Undergraduate	Graduate & Professional Student	Total
Afghanistan	1		1
Bangladesh	3	3	6
Bhutan		3	3
India	21	81	102
Kazakhstan	1		1
Kyrgyzstan	1		1
Nepal	3	4	7
Pakistan	14	10	24
Sri Lanka	5	4	9
<b>Total</b>	<b>49</b>	<b>105</b>	<b>154</b>

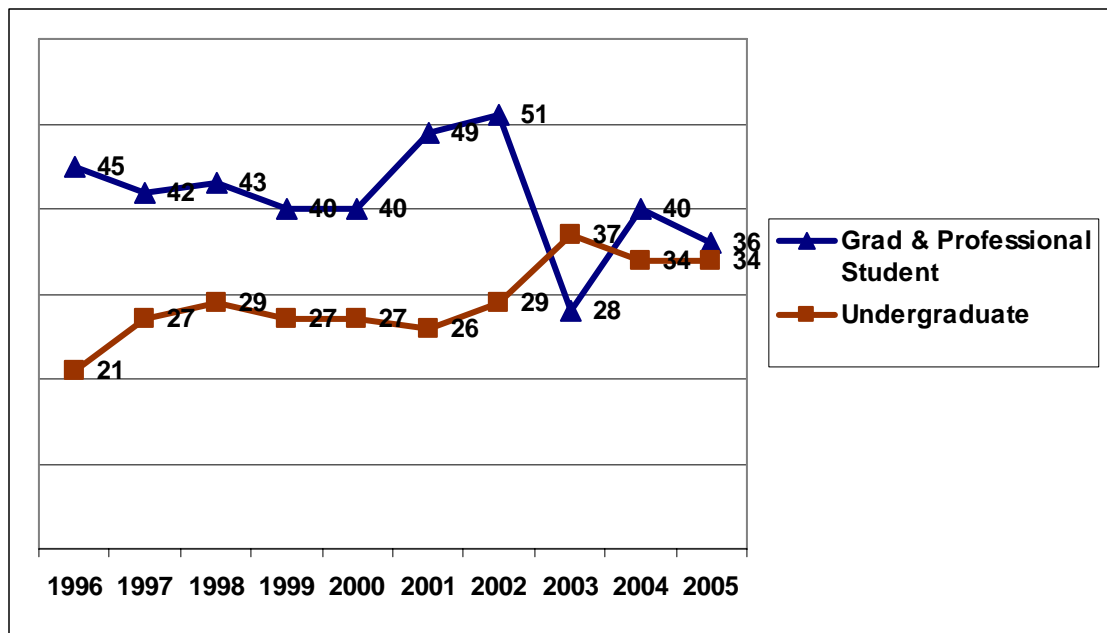
## SOUTH CENTRAL ASIA: REGIONAL TRENDS 1996-2005



## SOUTH EAST ASIA: STUDENT ENROLLMENT, FALL 2005

Country	Undergraduate	Graduate & Professional Student	Total
Burma		1	1
Indonesia	1	1	2
Malaysia	9	6	15
Philippines	2	4	6
Singapore	13	19	32
Thailand	7	2	9
Vietnam	2	3	5
<b>Total</b>	<b>34</b>	<b>36</b>	<b>70</b>

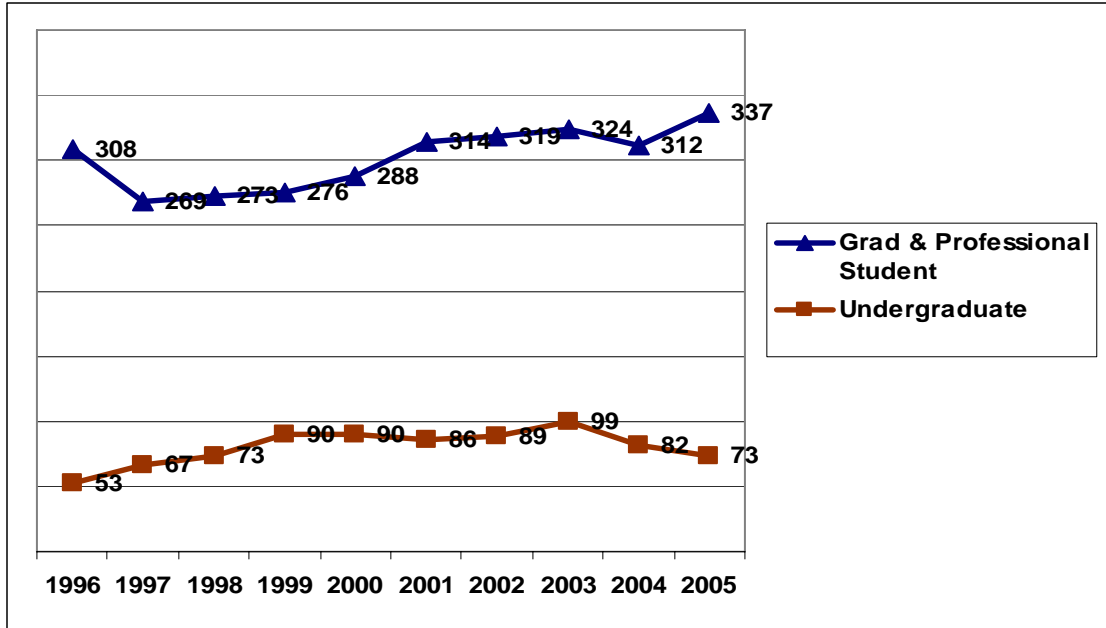
## SOUTH EAST ASIA: REGIONAL TRENDS 1996-2005



## EUROPE: STUDENT ENROLLMENT, FALL 2005

Country	Undergraduate	Graduate & Professional Student	Total
Albania		3	3
Armenia		2	2
Austria		5	5
Azerbaijan		1	1
Belarus		1	1
Belgium		7	7
Bulgaria	6	19	25
Croatia	2	5	7
Czech Republic		1	1
Denmark	1	3	4
Estonia	1	2	3
Finland		1	1
France	2	19	21
Germany	6	60	66
Greece	6	13	19
Hungary		2	2
Iceland		1	1
Ireland	5	11	16
Italy	5	40	45
Latvia		1	1
Macedonia, The Republic of	1		1
Moldova	1	2	3
Netherlands		5	5
Norway	1	3	4
Poland	4	8	12
Portugal		2	2
Romania	2	14	16
Russia	4	13	17
Slovakia	1		1
Spain		19	19
Sweden		8	8
Switzerland	1	6	7
Ukraine	1	6	7
United Kingdom	18	52	70
Yugoslavia	5	4	9
<b>Total</b>	<b>73</b>	<b>339</b>	<b>412</b>

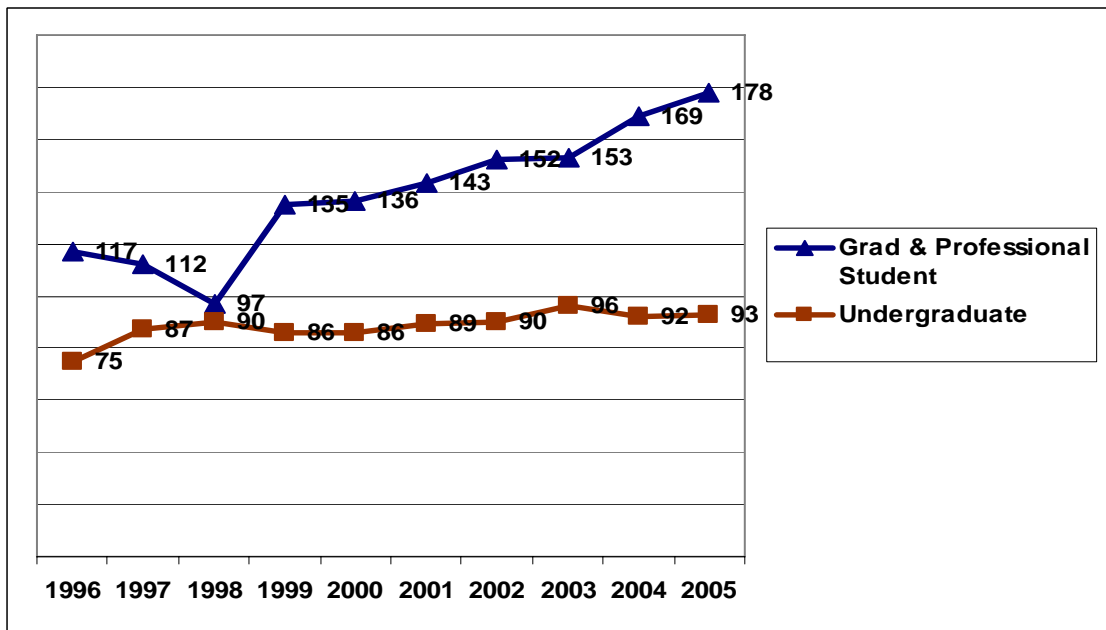
## EUROPE: REGIONAL TRENDS 1996-2005



## NORTH AMERICA: STUDENT ENROLLMENT, FALL 2005

Country	Undergraduate	Graduate & Professional Student	Total
Canada	84	155	239
Mexico	9	23	32
<b>Total</b>	<b>93</b>	<b>178</b>	<b>271</b>

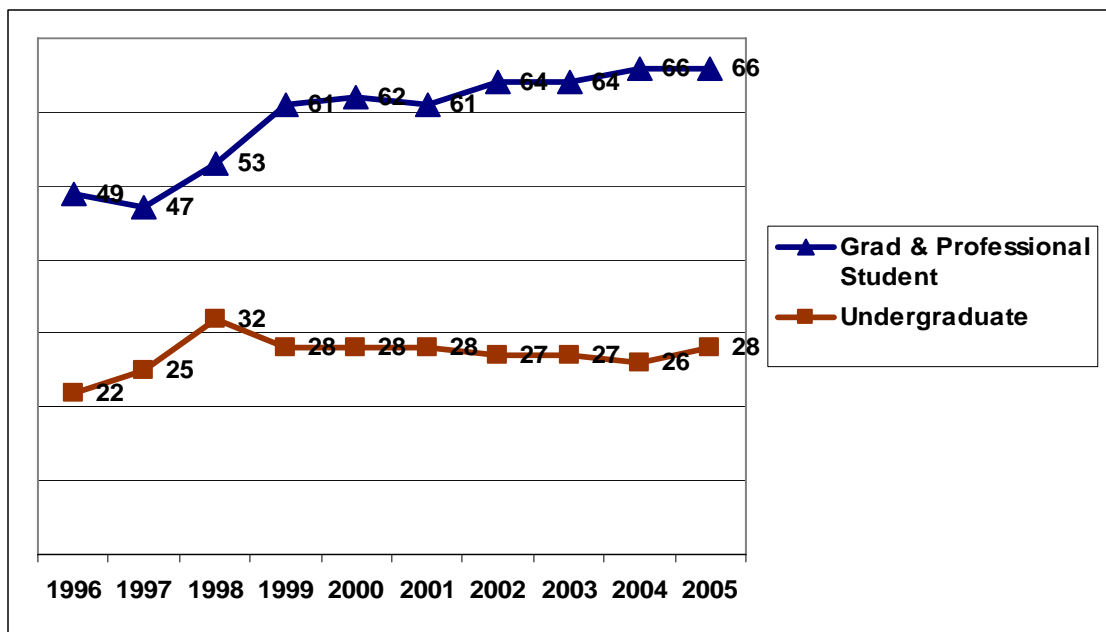
## NORTH AMERICA: REGIONAL TRENDS 1996-2005



## MIDDLE EAST: STUDENT ENROLLMENT, FALL 2005

Country	Undergraduate	Graduate & Professional Student	Total
Bahrain	1	1	2
Cyprus	1	2	3
Iran		7	7
Israel	4	25	29
Kuwait		1	1
Lebanon		5	5
Saudi Arabia		1	1
Turkey	22	23	45
West Bank		1	1
<b>Total</b>	<b>28</b>	<b>66</b>	<b>94</b>

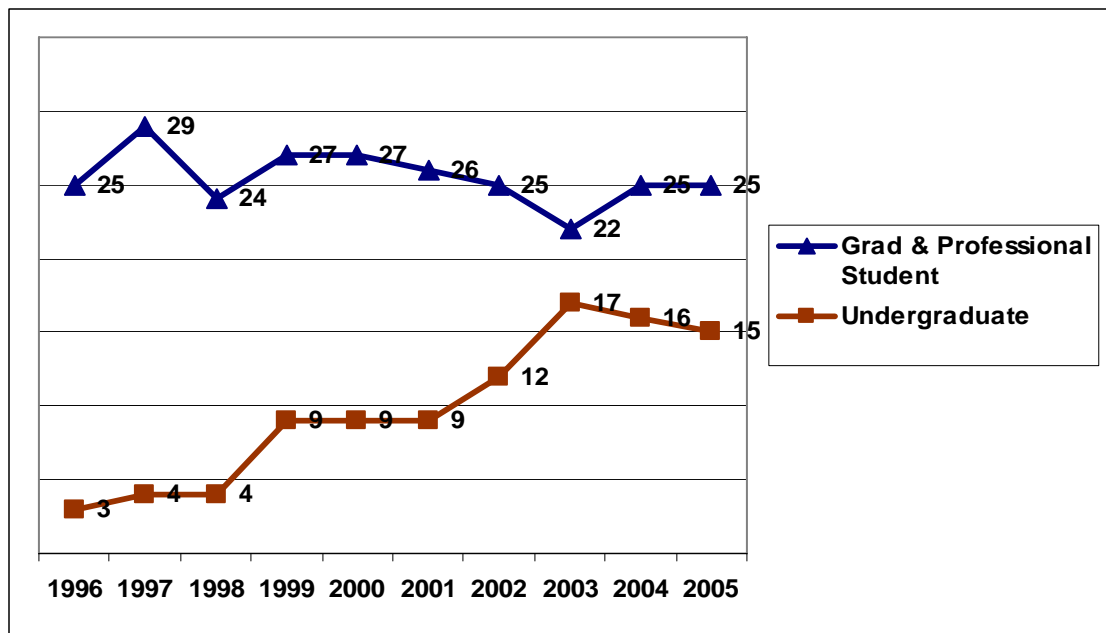
## MIDDLE EAST: REGIONAL TRENDS 1996-2005



## OCEANIA: STUDENT ENROLLMENT, FALL 2005

Country	Undergraduate	Graduate	Total
Australia	11	18	29
New Zealand	4	7	11
<b>Total</b>	<b>15</b>	<b>25</b>	<b>40</b>

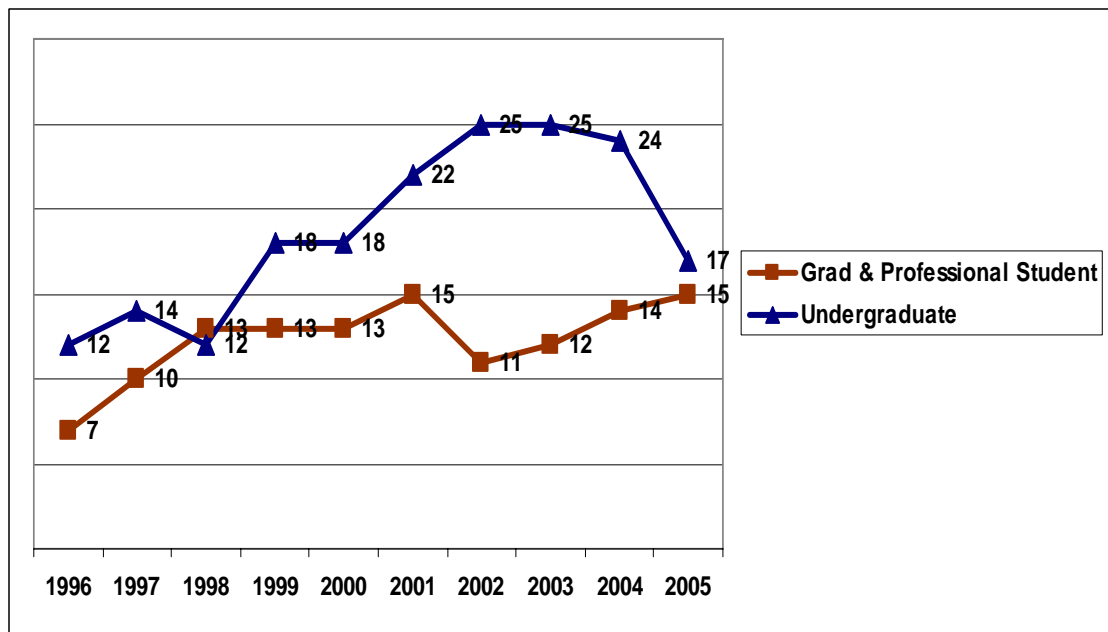
## OCEANIA: REGIONAL TRENDS 1996-2005



## THE CARIBBEAN & CENTRAL AMERICA: STUDENT ENROLLMENT, FALL 2005

Country	Undergraduate	Graduate & Professional Student	Total
Bahamas, The	1	1	2
Belize		1	1
Costa Rica	2	2	4
El Salvador		1	1
Guatemala		2	2
Honduras	1		1
Jamaica	5	5	10
Nicaragua	1		1
Saint Kitts and Nevis	1		1
St. Lucia		1	1
St. Vincent and The Grenadines		1	1
Trinidad & Tobago	6	1	7
<b>Total</b>	<b>17</b>	<b>15</b>	<b>32</b>

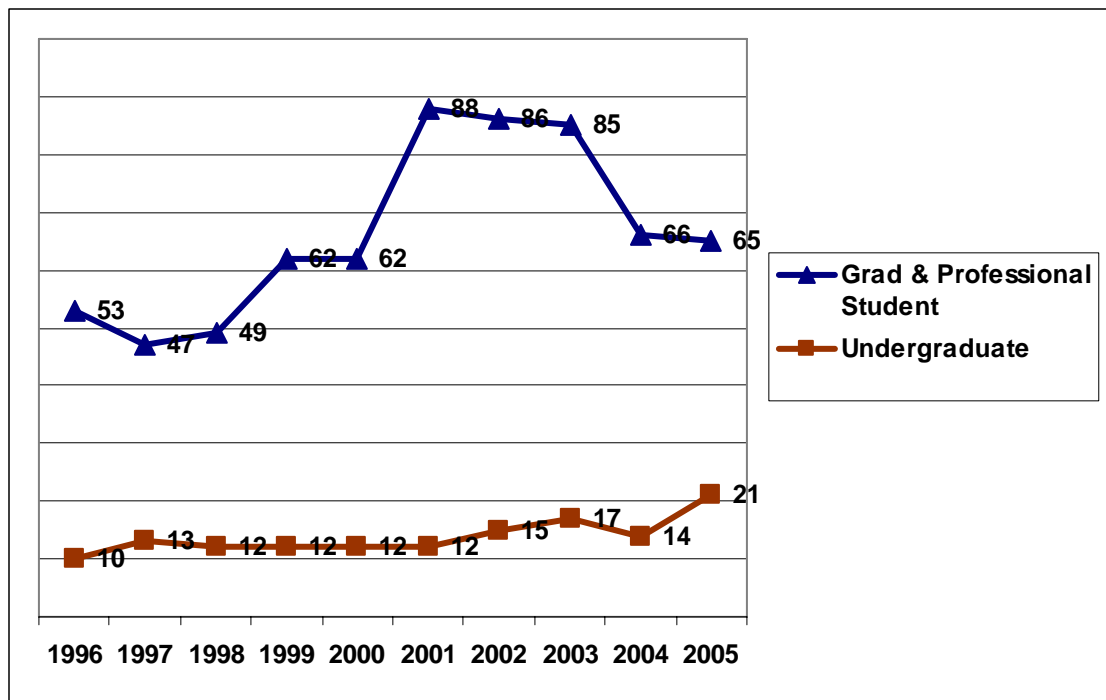
## THE CARIBBEAN & CENTRAL AMERICA: REGIONAL TRENDS 1996-2005



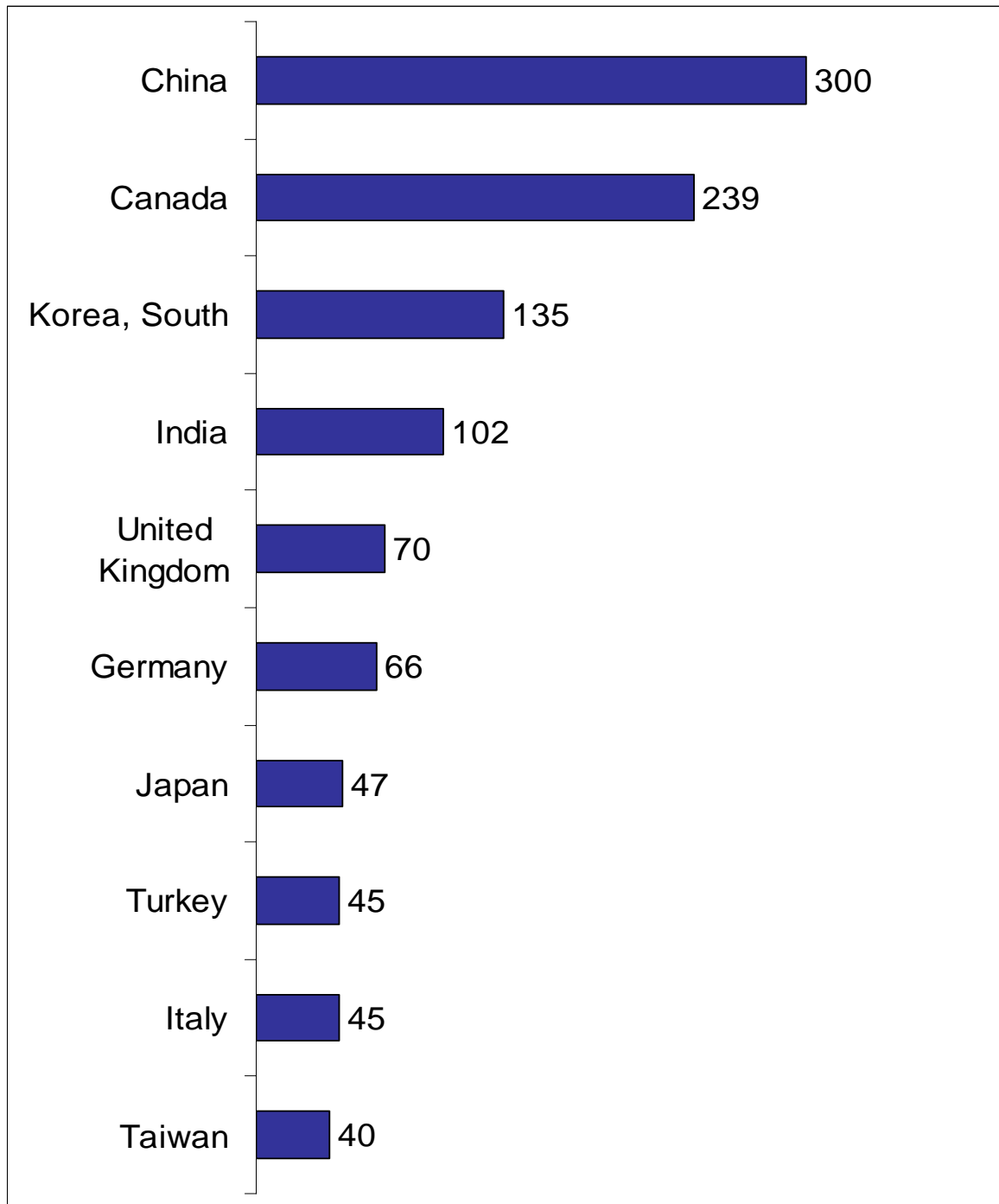
## SOUTH AMERICA: STUDENT ENROLLMENT, FALL 2005

Country	Undergraduate	Graduate & Professional Student	Total
Argentina	1	10	11
Bolivia	4	1	5
Brazil	6	22	28
Chile	1	8	9
Colombia	4	11	15
Ecuador	1	2	3
Guyana		1	1
Peru	2	7	9
Uruguay	1	1	2
Venezuela	1	2	3
<b>Total</b>	<b>21</b>	<b>65</b>	<b>86</b>

## SOUTH AMERICA: REGIONAL TRENDS 1996-2005



## INTERNATIONAL STUDENTS TOP TEN COUNTRIES, FALL 2005



## INTERNATIONAL STUDENTS BY COUNTRY OF CITIZENSHIP FALL 2005

Citizenship	Undergraduate	Graduate & Professional Student	Grand Total
Afghanistan	1		1
Albania		3	3
Argentina	1	10	11
Armenia		2	2
Australia	11	18	29
Austria		5	5
Azerbaijan		1	1
Bahamas, The	1	1	2
Bahrain	1	1	2
Bangladesh	3	3	6
Belarus		1	1
Belgium		7	7
Belize		1	1
Bhutan		3	3
Bolivia	4	1	5
Botswana	1	1	2
Brazil	6	22	28
Bulgaria	6	19	25
Burma		1	1
Canada	84	155	239
Chile	1	8	9
China	27	273	300
Colombia	4	11	15
Costa Rica	2	2	4
Croatia	2	5	7
Cyprus	1	2	3
Czech Republic		1	1
Denmark	1	3	4
Ecuador	1	2	3
Egypt		3	3
El Salvador		1	1
Estonia	1	2	3
Ethiopia	1		1
Finland		1	1
France	2	19	21
Germany	6	60	66
Ghana	7	7	14
Greece	6	13	19
Guatemala		2	2
Guinea		1	1
Guyana		1	1
Honduras	1		1

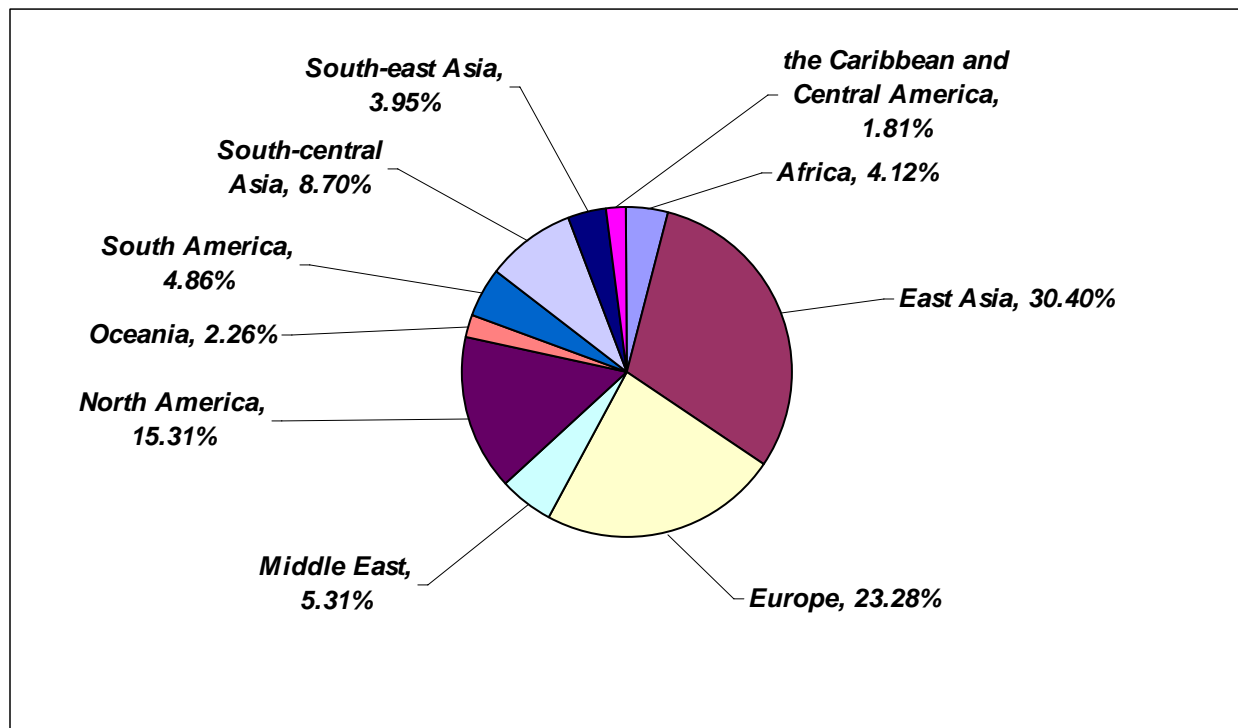
Continued from previous page

Hong Kong	5	9	14
Hungary		2	2
Iceland		1	1
India	21	81	102
Indonesia	1	1	2
Iran		7	7
Ireland	5	11	16
Israel	4	25	29
Italy	5	40	45
Jamaica	5	5	10
Japan	9	38	47
Kazakhstan	1		1
Kenya	9	4	13
Korea, South	29	106	135
Kuwait		1	1
Kyrgyzstan	1		1
Latvia		1	1
Lebanon		5	5
Macau		1	1
Macedonia, The Republic of	1		1
Madagascar		1	1
Malaysia	9	6	15
Mauritius	2	1	3
Mexico	9	23	32
Moldova	1	2	3
Mongolia		1	1
Morocco	1		1
Nepal	3	4	7
Netherlands		5	5
New Zealand	4	7	11
Nicaragua	1		1
Nigeria		11	11
Norway	1	3	4
Pakistan	14	10	24
Peru	2	7	9
Philippines	2	4	6
Poland	4	8	12
Portugal		2	2
Romania	2	14	16
Russia	4	13	17
Saint Kitts and Nevis	1		1
Saudi Arabia		1	1
Singapore	13	19	32
Slovakia	1		1
South Africa	5	2	7
Spain		19	19
Sri Lanka	5	4	9

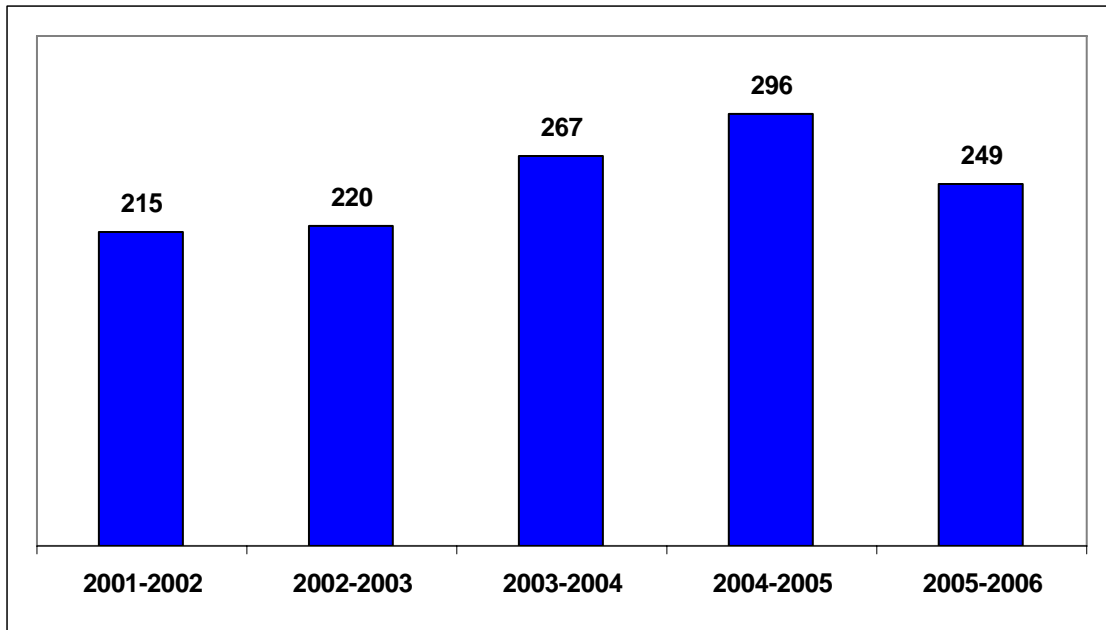
Continued from previous page

St. Lucia		1	1
St. Vincent and The Grenadines		1	1
Sweden		8	8
Switzerland	2	5	7
Taiwan	2	38	40
Tanzania	2	1	3
Thailand	7	2	9
Togo		1	1
Trinidad & Tobago	6	1	7
Turkey	22	23	45
Uganda		1	1
Ukraine	1	6	7
United Kingdom	18	52	70
Uruguay	1	1	2
Venezuela	1	2	3
Vietnam	2	3	5
West Bank		1	1
Yugoslavia	5	4	9
Zambia	1	1	2
Zimbabwe	7	2	9
<b>Grand Total</b>	<b>439</b>	<b>1331</b>	<b>1770</b>

### PERCENTAGE BY WORLD REGION FALL 2005

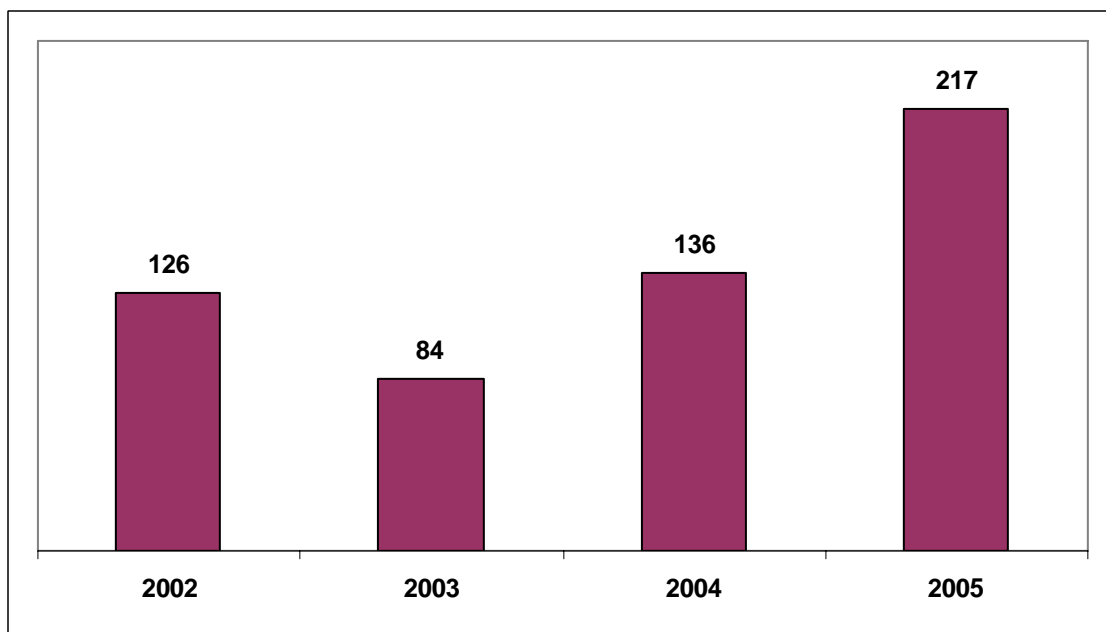


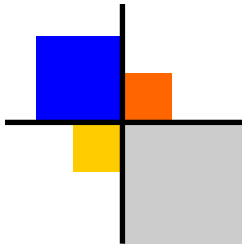
## **OPTIONAL PRACTICAL TRAINING\* AFTER GRADUATION FIVE YEAR TREND**



\* International students in F or J status may remain in the U.S. under Yale's visa sponsorship after graduation for up to 12 months (18 months for J) to engage in training related to their program of study.

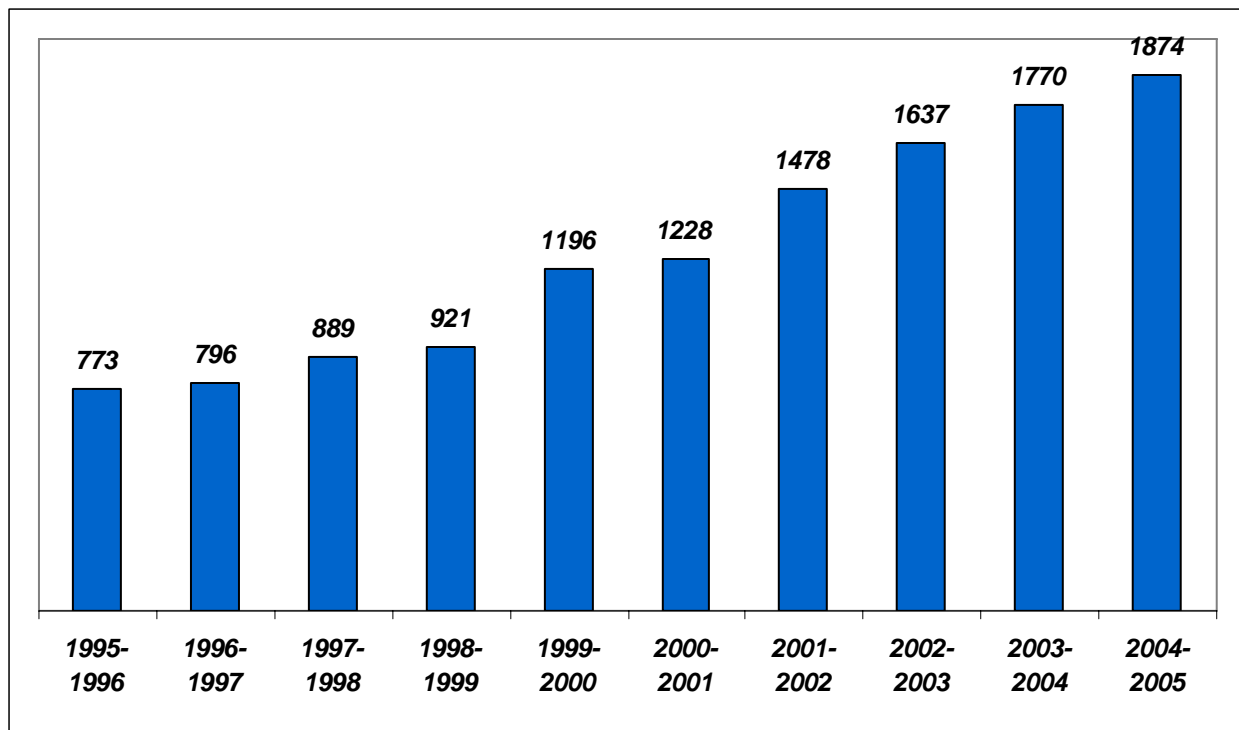
## **STUDENTS AT ENGLISH LANGUAGE INSTITUTE 2002-2005 (SUMMER ONLY)**





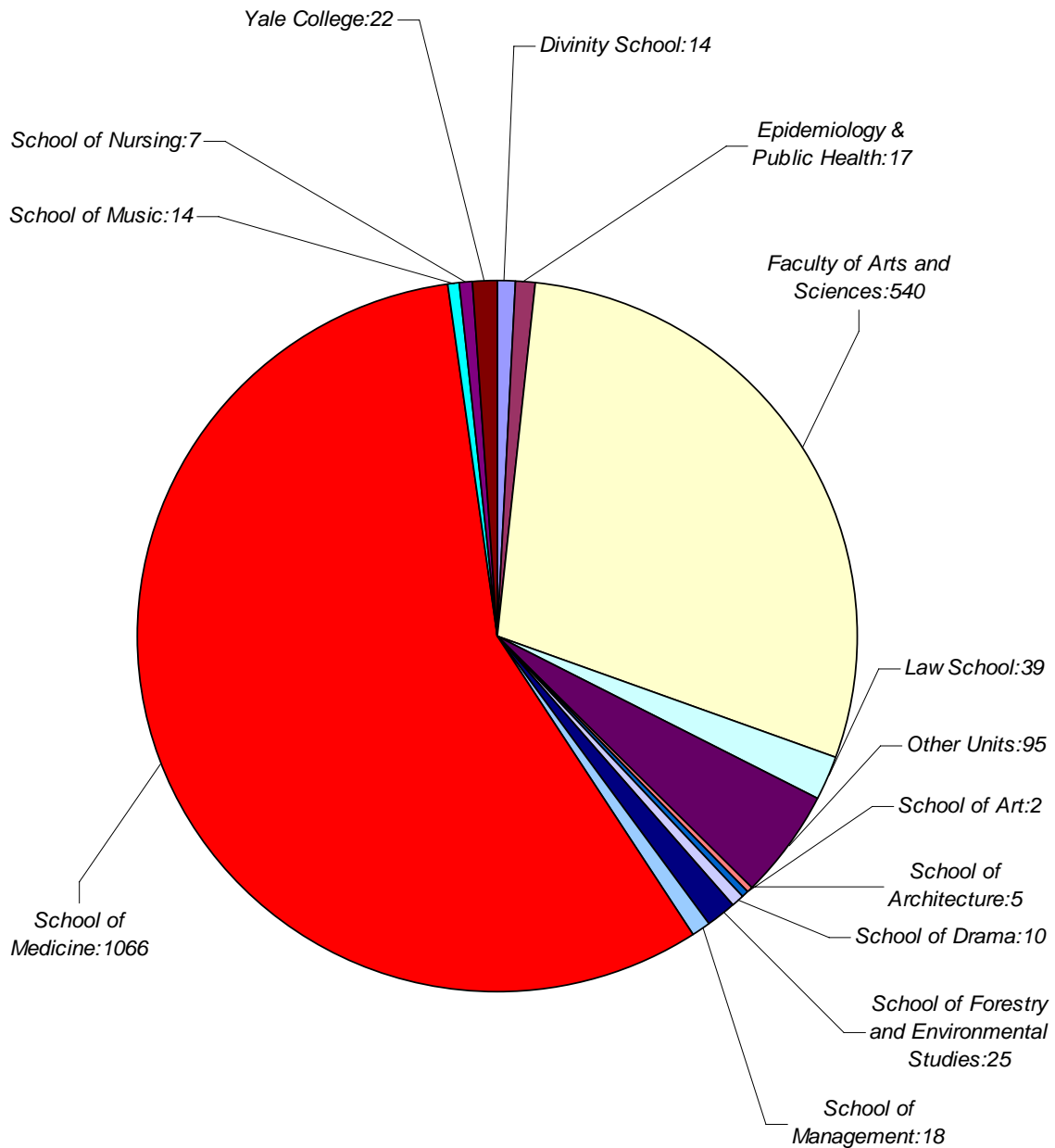
## **INTERNATIONAL SCHOLARS\* AT YALE 2004-2005**

### **INTERNATIONAL SCHOLARS 1995-2005**



\* Scholar statistics are compiled at the end of each academic year and represent individuals who have spent at least some part of the academic year at Yale in a non-immigrant classification. These figures do not include individuals who come to Yale in tourist or visitor status.

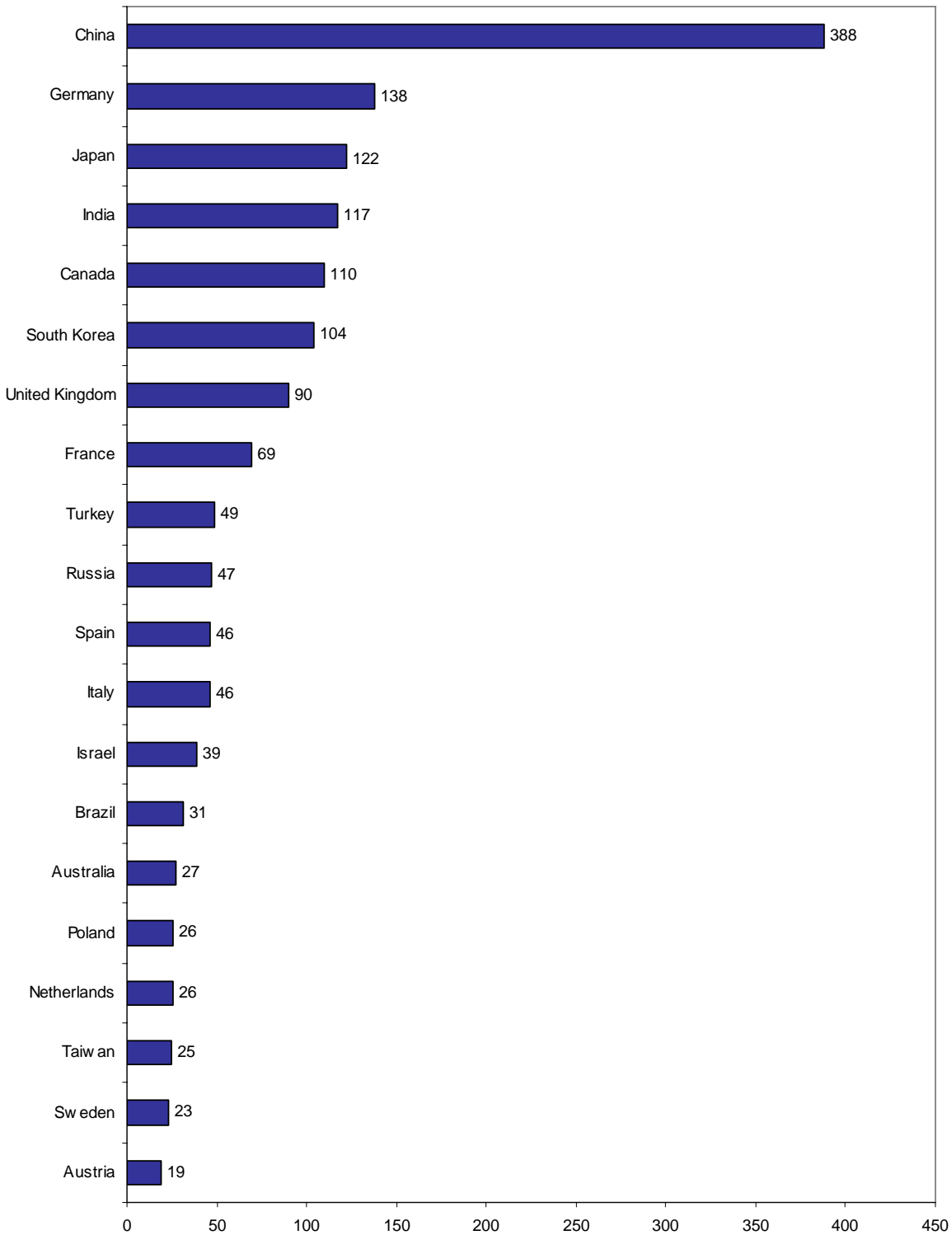
## INTERNATIONAL SCHOLARS BY SCHOOL 2004-2005



## INTERNATIONAL SCHOLARS BY DEPARTMENT OR UNIT 2004-2005

Department	Total	Department	Total	Department	Total
African Studies	1	Genetics	39	Music	15
Agrarian Studies	1	Geology and Geophysics	25	Near Eastern Languages and Civilizations	4
American Studies	2	Germanic Languages and Literature	8	Neurobiology	32
Anesthesiology	19	Haskins Labs	4	Neurology	28
Anthropology	4	History	11	Neurosurgery	23
Applied Mathematics	1	History of Art	3	Nursing	7
Applied Physics	12	History of Medicine	1	Obstetrics & Gynecology	60
Architecture	6	Immunobiology	46	Ophthalmology & Visual Science	13
Art	2	Immunology	2	Orthopaedics & Rehabilitation	17
Astronomy	15	Information Technology Services	9	Pathology	36
Athletics	2	Institute of Sacred Music	1	Pediatrics	25
Beincke Library	12	Internal Medicine	55	Pharmacology	65
Biomedical Engineering	1	Internal Medicine/Allergy	2	Philosophy	3
British Art Center	12	Internal Medicine/Cardiovascular	16	Physics	37
Cancer Center	9	Internal Medicine/Digestive Diseases	15	Physiology	4
Cardiology	4	Internal Medicine/Endocrinology	18	Political Science	10
Cell & Molecular Physiology	48	Internal Medicine/Geriatrics	2	Psychiatry	82
Cell Biology	53	Internal Medicine/Infectious Diseases	10	Psychology	15
Center for the Study of Globalization	12	Internal Medicine/Medical Oncology	5	Religious Studies	17
Chemical Engineering	10	Internal Medicine/Nephrology	30	Slavic Languages and Literature	4
Chemistry	50	Internal Medicine/Occupational & Env Medicine	2	Sociology	16
Child Study Center	20	Internal Medicine/Pulmonary	17	Southeast Asia Studies	1
Classics	2	Internal Medicine/Rheumatology	21	Spanish and Portuguese	8
Comparative Literature	6	International Affairs Office	1	Statistics	3
Comparative Medicine	1	Investments	1	Surgery	46
Computer Science	9	Italian Language and Literature	4	Teacher Preparation Program	1
Dermatology	5	Lab Medicine	8	The Joseph Slifka Center for Jewish Life	2
Diagnostic Radiology	33	Latin American and Iberian Studies	1	The Whitney Humanities Center	2
Drama	10	Law	39	Therapeutic Radiology	12
East Asian Languages and Literature	6	Learning Center	1	University Library	18
Ecology and Evolutionary Biology	13	Linguistics	2	Women & Gender Studies	2
Economics	29	Management	17	World Fellows Program	6
Electrical Engineering	13	Mathematics	23	Yale Cabaret	2
English	7	Mechanical Engineering	10	Yale Center for International & Area Studies	44
Epidemiology & Public Health	62	Medical Informatics	1	Yale University Press	1
Facilities	1	Microbial Pathogenesis	32	Yale-New Haven Teacher's Institute	1
Forestry & Environmental Studies	24	Molecular Biophysics & Biochemistry	110		
French	8	Molecular, Cellular & Developmental Biology	95	Total	1874

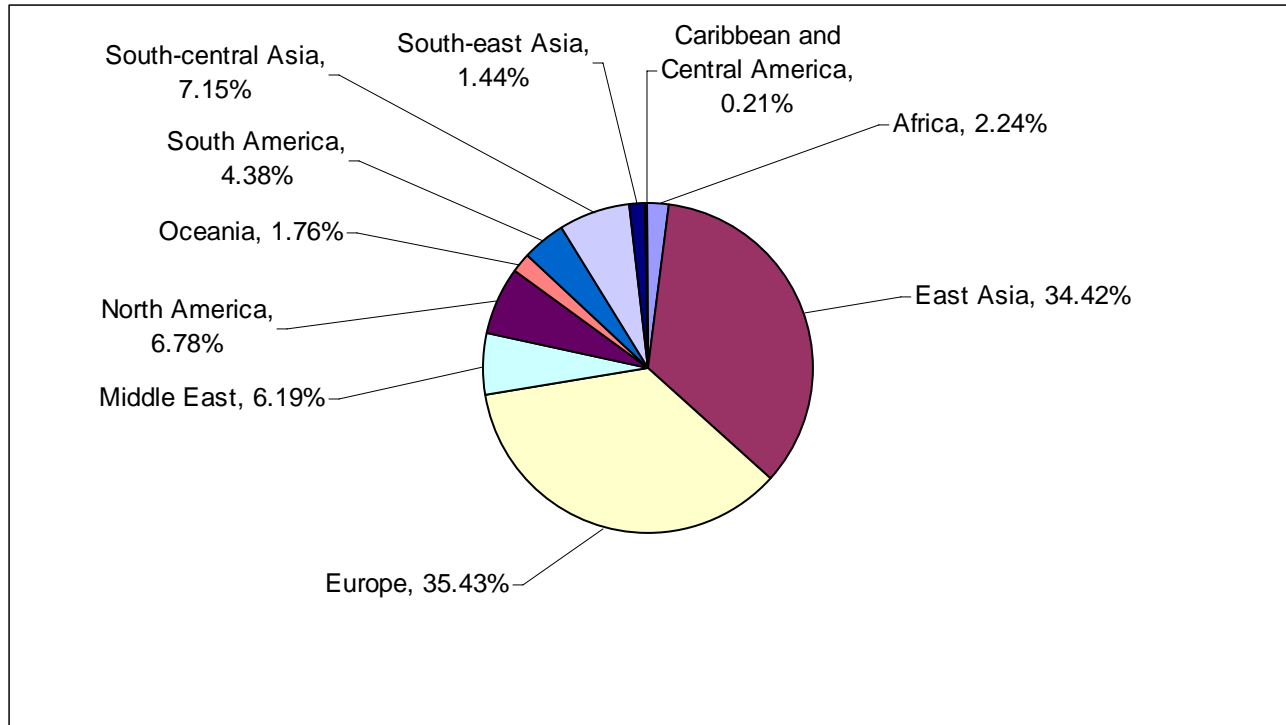
## INTERNATIONAL SCHOLARS TOP TWENTY COUNTRIES 2004-2005



## INTERNATIONAL SCHOLARS BY WORLD REGION 2004-2005

Africa	Total	South America	Total	Europe	Total
Algeria	1	Argentina	14	Albania	1
Cameroon	3	Bolivia	1	Armenia	1
Cote d'Ivoire	2	Brazil	31	Austria	19
Egypt	5	Chile	10	Belgium	10
Ghana	2	Colombia	8	Bulgaria	5
Kenya	4	Ecuador	3	Croatia	5
Madagascar	1	Peru	6	Czech Republic	6
Malawi	2	Venezuela	9	Denmark	11
Morocco	4		82	Estonia	1
Nigeria	3	Middle East	Total	Finland	6
South Africa	10	Bahrain	1	France	69
Tunisia	1	Cyprus	3	Germany	138
Uganda	2	Georgia	2	Greece	15
Zimbabwe	2	Iran	11	Hungary	10
<b>Total</b>	<b>42</b>	Israel	39	Iceland	2
		Jordan	3	Ireland	7
		Lebanon	6	Italy	46
East Asia	Total	Syria	1	Latvia	1
China	388	Turkey	49	Lithuania	2
Hong Kong	3	West Bank	1	Luxembourg	1
Japan	122			Malta	1
Mongolia	3	<b>Total</b>	<b>116</b>	Netherlands	26
South Korea	104			Norway	7
Taiwan	25			Poland	26
<b>Total</b>	<b>645</b>	Caribbean & Central America	Total	Portugal	3
		Barbados	1	Romania	14
		British Virgin Islands	1	Russia	47
		Guatemala	1	Serbia and Montenegro	7
		Jamaica	1	Slovakia	3
		<b>Total</b>	<b>4</b>	Spain	46
				Sweden	23
		South-east Asia	Total	Switzerland	10
		Burma	1	Ukraine	5
		Indonesia	3	United Kingdom	90
		Malaysia	1	<b>Total</b>	<b>664</b>
		Philippines	2		
		Singapore	5		
		Thailand	14	Oceania	Total
		VietNam	1	Australia	27
		<b>Total</b>	<b>27</b>	New Zealand	6
				<b>Total</b>	<b>33</b>
North America	Total				
Canada	110				
Mexico	17				
<b>Total</b>	<b>127</b>				

## INTERNATIONAL SCHOLARS BY WORLD REGION, 2004-2005



## LEADING INSTITUTIONS HOSTING INTERNATIONAL SCHOLARS\*, 2003/04 & 2004/05

Rank	Institution	City	State	2003/04	2004/05
1	Harvard University	Cambridge	MA	3029	3367
2	University of California - Los Angeles	Los Angeles	CA	2130	2159
3	University of California - Berkeley	Berkeley	CA	1960	2107
4	University of California - San Diego	La Jolla	CA	1949	2075
5	Columbia University	New York	NY	1916	1991
6	University of Pennsylvania	Philadelphia	PA	1938	1938
7	University of Florida	Gainesville	FL	1704	1886
8	<b>Yale University</b>	<b>New Haven</b>	<b>CT</b>	<b>1770</b>	<b>1874</b>
9	Massachusetts Institute of Technology	Cambridge	MA	1567	1687
10	University of Washington	Seattle	WA	1557	1625
11	University of California - Irvine	Irvine	CA	1478	1607
12	Stanford University	Stanford	CA	1642	1595
13	The Ohio State University, Main Campus	Columbus	OH	1520	1570
14	University of California - Davis	Davis	CA	1356	1516
15	University of Illinois at Urbana-Champaign	Champaign	IL	1427	1470
16	University of California - San Francisco	San Francisco	CA	1600	1394
17	Washington University in St. Louis	St. Louis	MO	1195	1336
18	Cornell University	Ithaca	NY	1242	1305
19	University of Southern California	Los Angeles	CA	1280	1303
20	Texas A&M University	College Station	TX	775	1254
21	Michigan State University	East Lansing	MI	977	1221
22	University of Minnesota - Twin Cities	Minneapolis	MN	1241	1196
23	University of Michigan	Ann Arbor	MI	1291	1188
24	Duke University & Medical Center	Durham	NC	1120	1187
25	Pennsylvania State University - University Park	University Park	PA	637	1184
26	University of North Carolina at Chapel Hill	Chapel Hill	NC	1047	1183
27	University of Maryland College Park	College Park	MD	1038	1140
28	Boston University	Boston	MA	1080	1135
29	University of Texas at Austin	Austin	TX	946	1022
30	University of Wisconsin - Madison	Madison	WI	1177	1011

\* Date Source: Open Doors 2004: Report on International Educational Exchange

Published by Institute of International Education

## **IVY LEAGUE AND OTHER INSTITUTIONS**

**BROWN UNIVERSITY**

**COLUMBIA UNIVERSITY**

**CORNELL UNIVERSITY**

**DARTMOUTH COLLEGE**

**HARVARD UNIVERSITY**

**MASSACHUSETTS INSTITUTE OF TECHNOLOGY**

**PRINCETON UNIVERSITY**

**STANFORD UNIVERSITY**

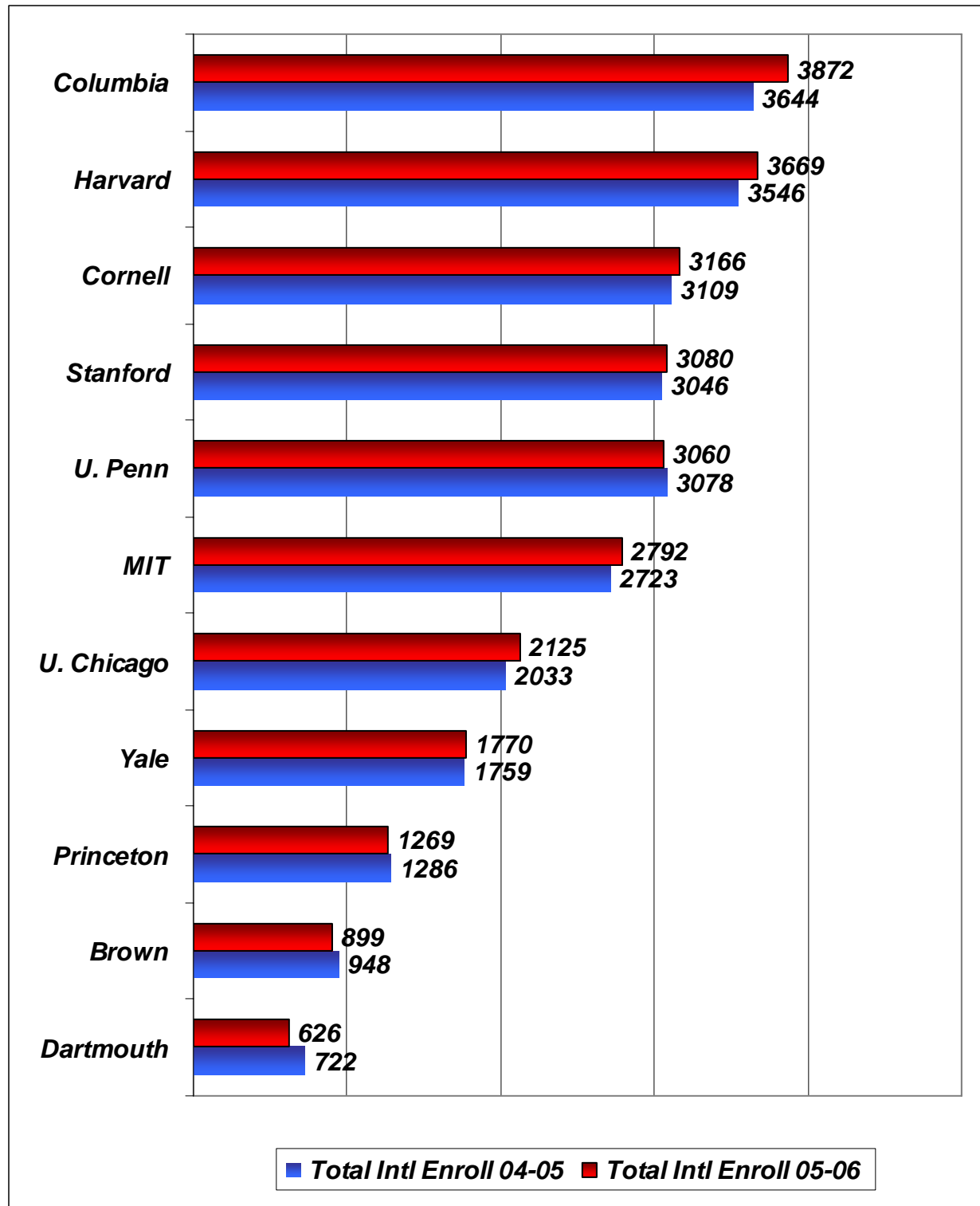
**UNIVERSITY OF PENNSYLVANIA**

**UNIVERSITY OF CHICAGO**

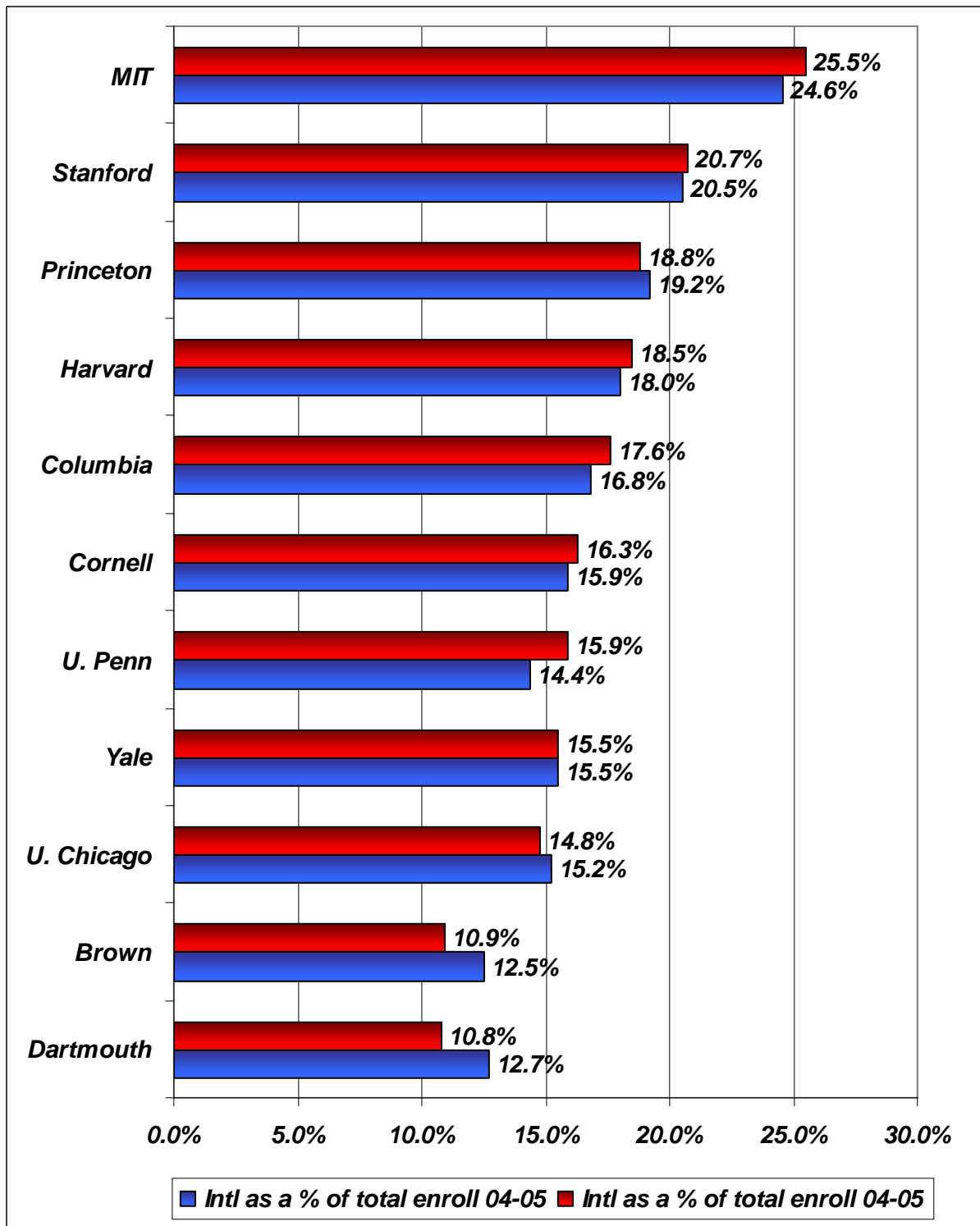
**YALE UNIVERSITY**

Source: Data collected for Annual Ivy Plus Meeting

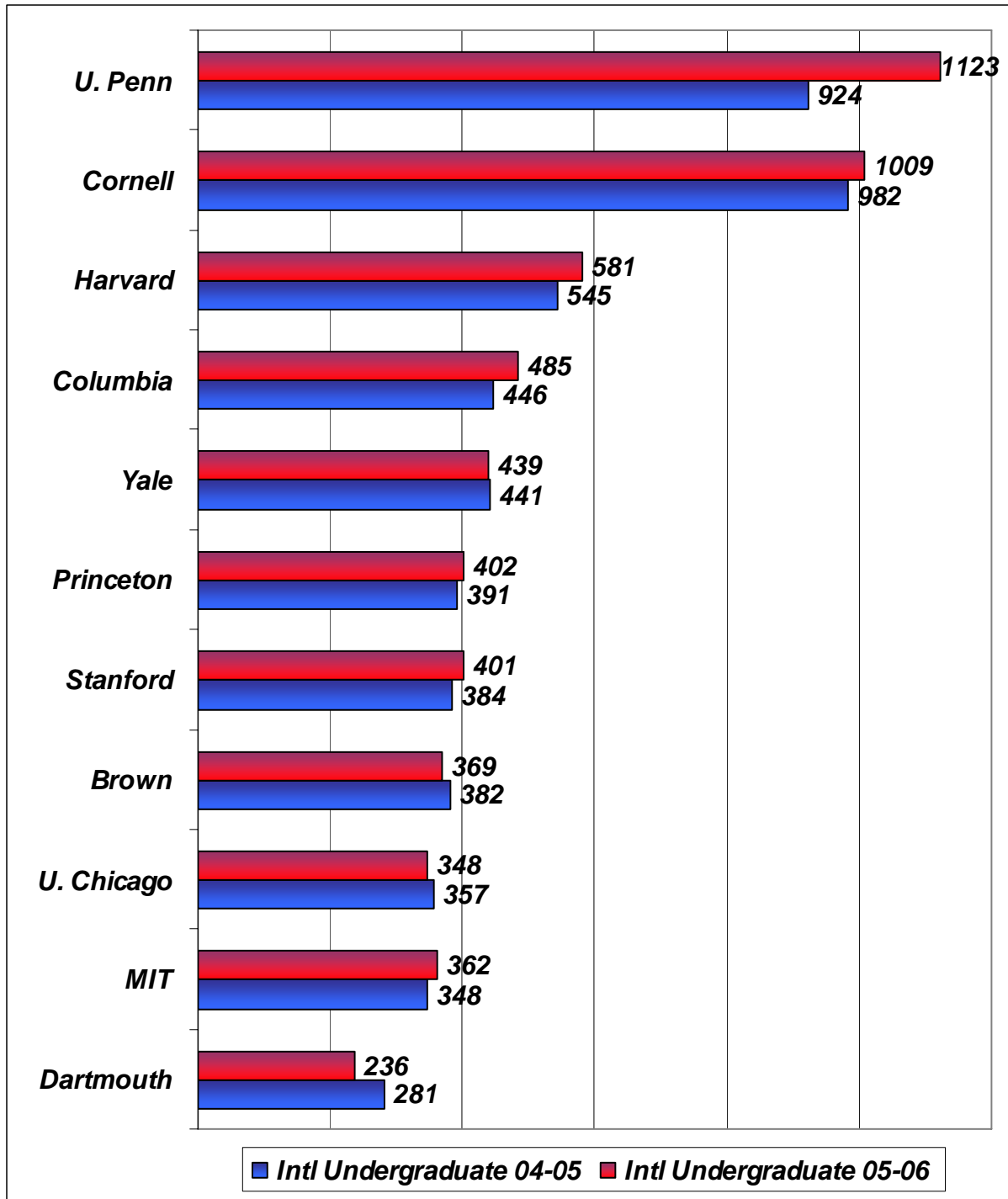
## INTERNATIONAL STUDENT ENROLLMENT AT IVY LEAGUE AND OTHER INSTITUTIONS FALL 2005



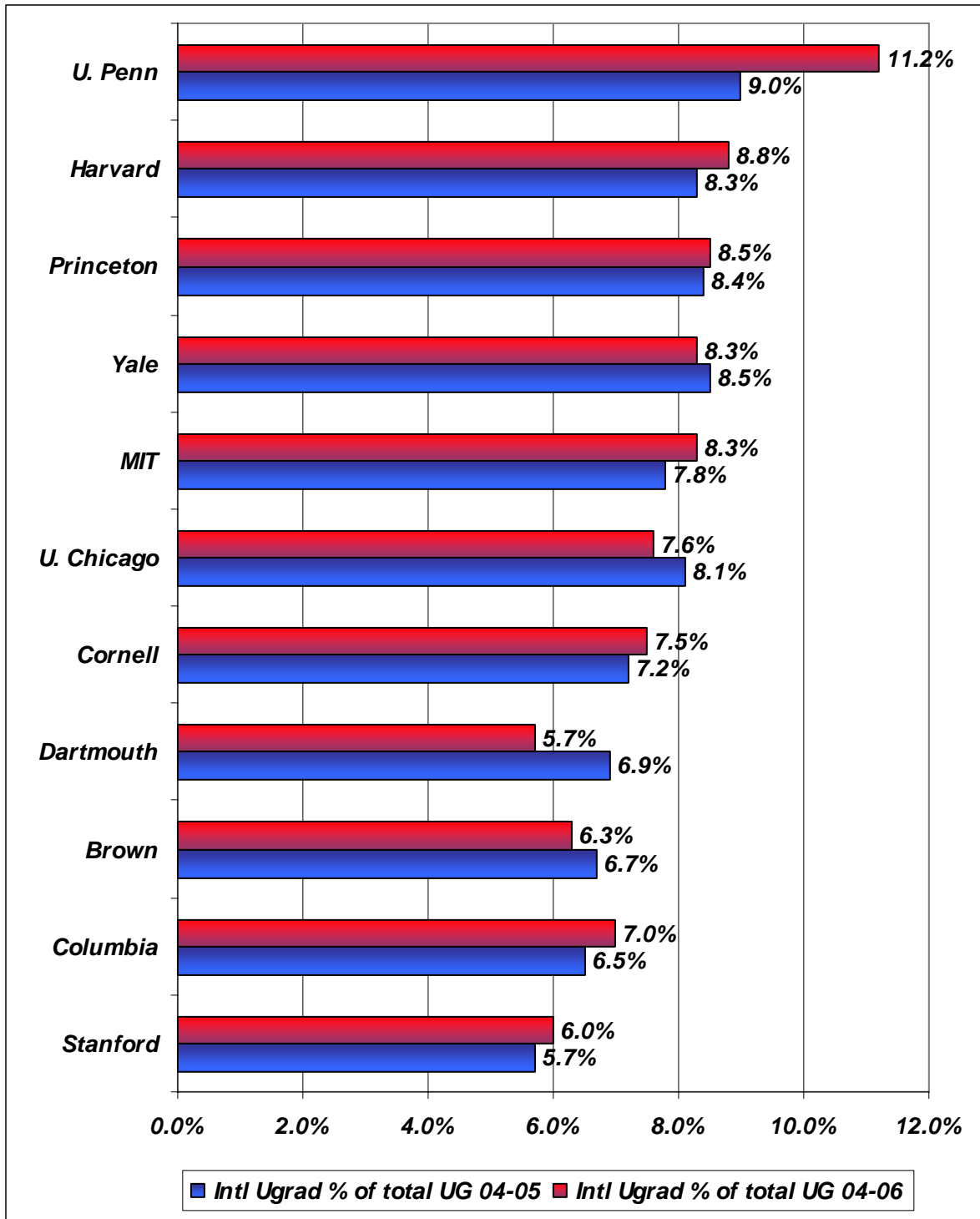
## INTERNATIONAL STUDENTS AS A PERCENT OF ALL STUDENTS FALL 2005



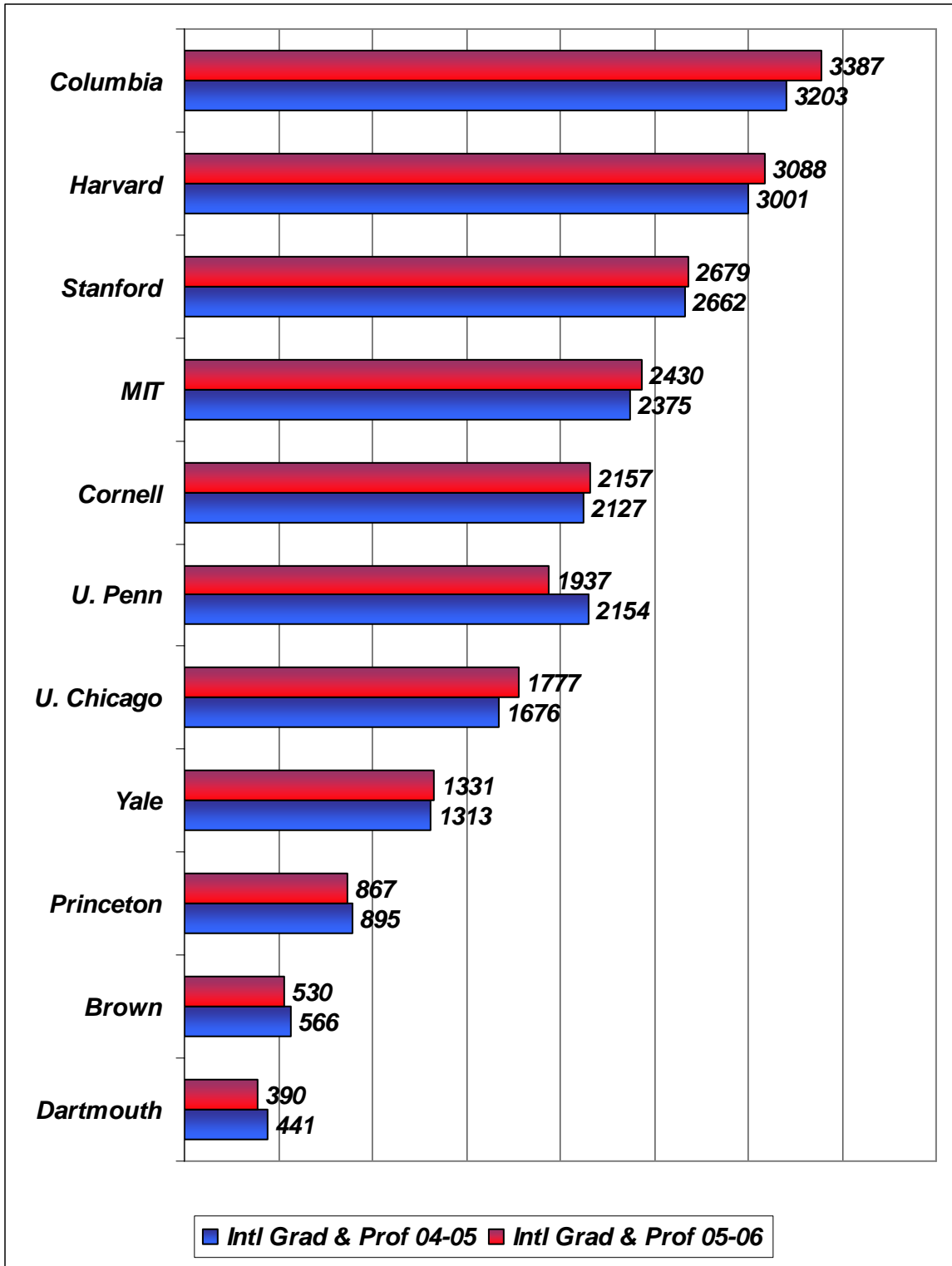
## INTERNATIONAL UNDERGRADUATE STUDENT ENROLLMENT, FALL 2005



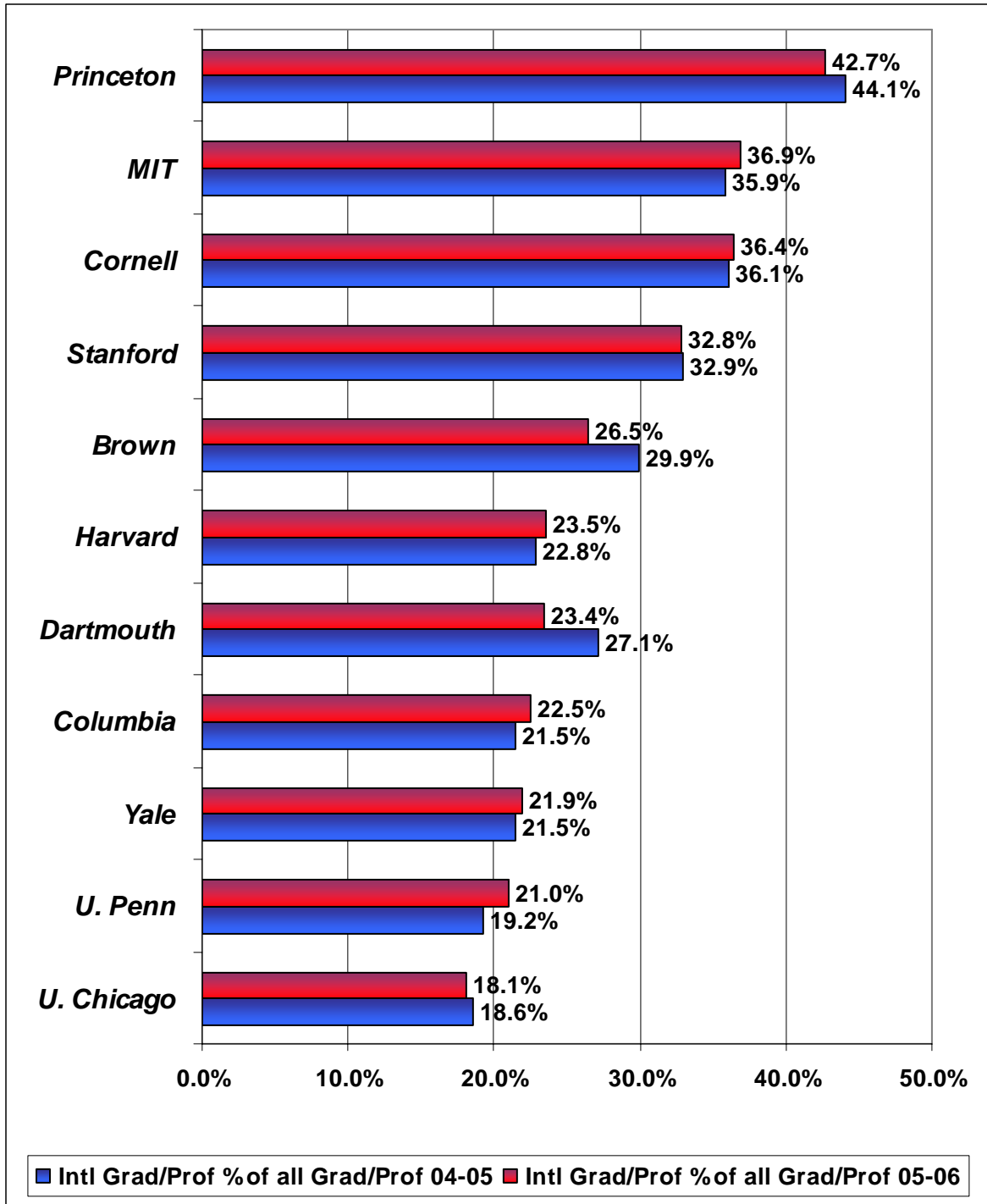
## INTERNATIONAL UNDERGRADUATE AS A PERCENT OF TOTAL UNDERGRADUATE FALL 2005



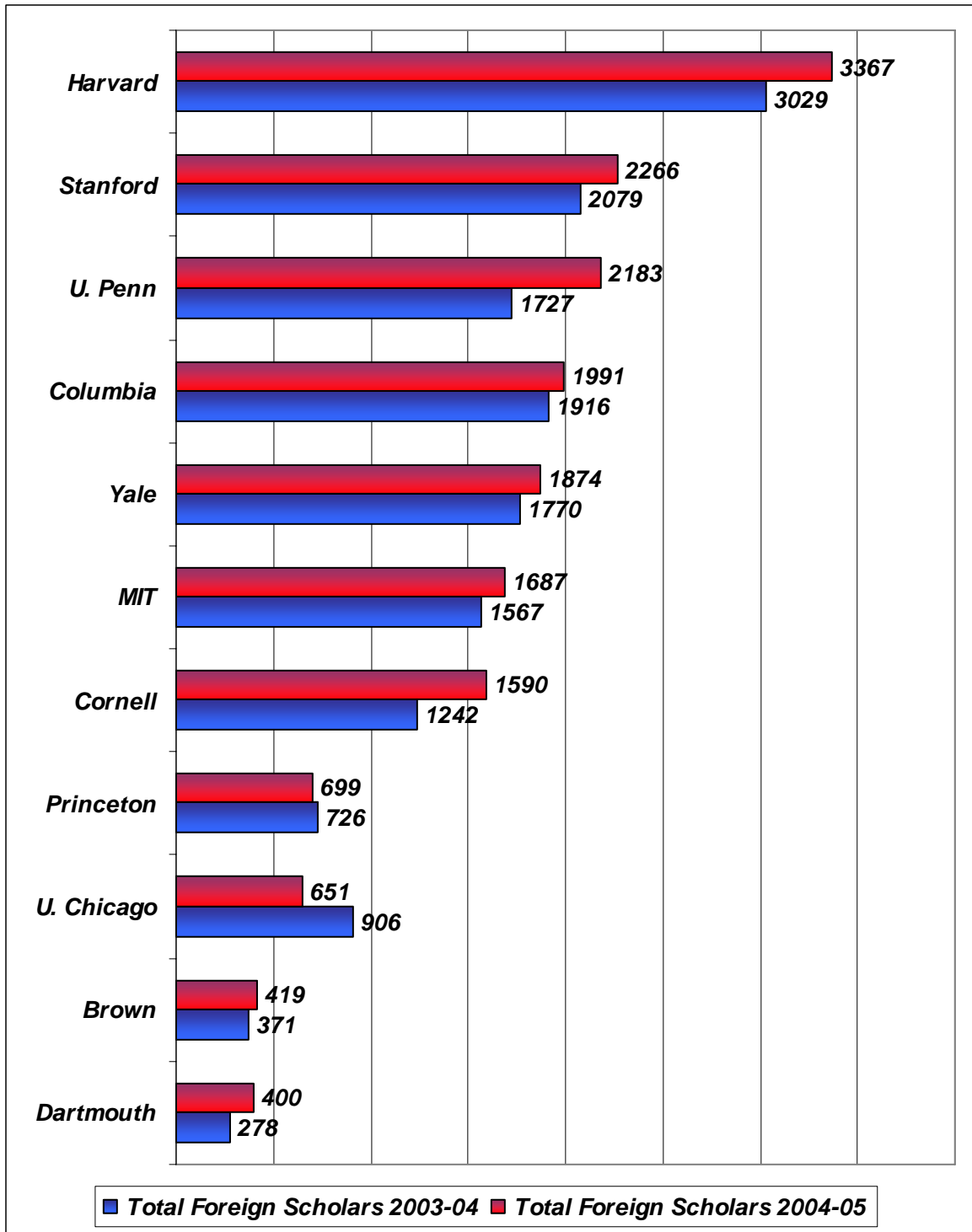
## INTERNATIONAL GRADUATE & PROFESSIONAL STUDENT ENROLLMENT FALL 2005



## INT'L GRADUATES & PROFESSIONALS AS A PERCENT OF TOTAL GRADUATES & PROFESSIONALS FALL 2005



## INTERNATIONAL SCHOLARS AT IVY LEAGUE AND OTHER INSTITUTIONS FALL 2004-2005



## OISS PROGRAMS: PROVIDING ON-GOING SUPPORT TO YALE'S INTERNATIONAL COMMUNITY

The highlight of the 2005-2006 academic year has been the opening of the new International Center for Yale Students and Scholars in November 2005. The International Center, which is the new home of the Office of International Students and Scholars (OISS), provides a welcoming and supportive environment for international students and scholars, as well as a venue for student groups to meet and hold events. In addition, the Center includes office carrels for nine visiting scholars. In its first six months, The Center has seen significant use by student groups, academic departments and OISS and its programming partners\*, with activities and events scheduled throughout the day and in the evening. The new center has increased the programming capacity of OISS and we have continued our tradition offering a variety of programs, knowing that, for example, some will be of interest to Yale College freshmen and others to international postdoctoral scholars. The list below highlights some of OISS' regular offerings. In addition to the more formal programs, OISS makes a priority of being available to individual students and scholars. OISS staff provide a walk-in advising service, speaking with numbers of students and scholars each day about a wide variety of concerns: housing, personal and legal matters, present and future employment options, and of course, immigration regulations.

### Print or On-Line Resources

- OISS Web site. A comprehensive Web site with a vast array of resources and links for international students and scholars as well as links to departments that host and hire international scholars, ([www.oiss.yale.edu](http://www.oiss.yale.edu))
- Handbook for International Students and Scholars. This 90-page handbook was first written and compiled in July 2000 to assist with issues of settling in, social and cultural adjustment, culture shock, academic issues, health care, and more. The handbook is currently in its fifth edition.
- OISS-L Electronic Newsletter. Begun in the fall of 1999, OISS announcements are now sent weekly with a regular format and more comprehensive content. University administrators have been encouraged to join this group as a way of staying alert to the issues important to the international community.
- Yale International E-Group. This interactive e-group of over 2500 members (doubled since 2002) has voluntary enrollment and serves as an informal way to connect international graduate and professional students and visiting scholars across the lines drawn by schools, departments and lab walls.
- ISPY Handbook: Passport to Yale & New Haven. Funded through a grant from the U.S. State Department, this is a comprehensive handbook written by international spouses, for international spouses and partners. A companion website, whose development was also funded by the DOS grant, resides at [www.groups.msn.com/ISPYInternationalSpousesandPartnersatYale/welcomel.msnw](http://www.groups.msn.com/ISPYInternationalSpousesandPartnersatYale/welcomel.msnw)

### Orientation Programs

- Undergraduate Orientation. OIS (Orientation for International Students) – Run by Yale College international student counselors, these three days of activities prior to regular freshman orientation are designed to introduce new Yale College international students to Yale and New Haven and provide the opportunity to meet other new students.
- Orientation Program for Graduate and Professional International Students. A month-long series of events and activities that complement the orientation activities of the graduate and professional schools, which includes information sessions, social gatherings and culminates in the annual OISS/YCIAS reception for international students and scholars.
- Orientation for International Spouses & Partners at Yale. Begun as a two hour meeting with OISS staff, this orientation program is now a three-day event in the fall organized and run by the members of International Spouses & Partners at Yale (ISPY).
- Post-Doc and Visiting Scholar Orientation. First, offered in the spring term 2005, OISS with the Office of International Affairs organizes monthly orientation programs and campus tours for newly arrived international scholars.
- Post-Doc Socials. Working with a small group of postdocs, OISS offers a social event each month. This event is co-sponsored by the McDougal Center for Graduate Student Life and the Offices of Post Doctoral Affairs.

## Year-round Programs

- OISS English Conversation Groups. Begun in 2000 as one weekly group, the OISS English Conversation Program has expanded to include seven groups each week. Facilitated by volunteers and OISS staff, these groups, which attract over one hundred international graduate students and scholars and their dependents each week, offer an opportunity for informal English conversation practice.
- One-On-One Conversations. A new addition this year, this program matches international postdocs and visiting scholars (and soon interested graduate students) with a volunteer for a weekly hour of English conversation. This successful program has to date has found matches for more than 70 scholars.
- International Coffee Hour. These monthly social gatherings (co-sponsored by OISS and the McDougal Center) are hosted by a different student group each month giving each group an opportunity to introduce the culture and cuisine of their homelands.
- U.S. Culture Exploration Workshops, including: U.S. Academic Culture, Tips For Academic Success, An Introduction to U.S. Culture, Dealing with Culture Shock, Dangerous English, Race and Ethnicity, Religions in the U.S., Friendship and Friendliness, and Not Your Ordinary Closet: a cross-cultural GLBTQ discussion. The informal format of the program provides participants with a comfortable place to ask questions not only about the cultural differences and norms in the U.S. classroom, but also matters relating directly to surviving and thriving at Yale.
- Hosting Program. In the summer of 2004, OISS initiated a host family program for Yale College freshmen. About 30 international students in the Class of 2008 were matched with local families and many have gotten to know each other over the course of this semester. In addition, OISS has for several years now, matched more than 60 students with local hosts for Thanksgiving dinner.
- Whitney Conversation Partners. Begun in spring 2004 by a community volunteer, this program arranges one-on-one language and culture exchange between the Whitney Center retirement community volunteers and Yale students, scholars and their dependents.
- International Spouses & Partners at Yale (ISPY). Started by a group of spouses in Fall 2000, ISPY now has over one hundred members on its roster. ISPY activities include: welcoming newly arrived spouses and partners, monthly meetings, weekly craft circle, book clubs and coffee hours, monthly luncheons, ISPY at the Yale Repertory Theater, and a summer hiking group. Recently added is a regular get-together for mothers and young babies. "Babies at Yale" meets weekly throughout the year.
- Surviving a New England Winter and Coat Give Away. For the second year, the University Health Service, McDougal Center, Office of International Affairs, and OISS have co-sponsored this program and provided gently used coats to over 100 international students and scholars.
- International Programming Fund. This fund is used to support student and scholar nationality clubs at Yale.
- OISS Road Trips. Several times each semester OISS organizes outings to nearby sites of interest, including New York City walking trips, trips to a Broadway show and to see the holiday lights, as well as trips to the Thimble Islands, Newport, West Point and Boston.

\* McDougal Center for Graduate Student Life of the Graduate School of Arts and Sciences, Offices of Postdoctoral Affairs and the Office of International Affairs.

## OISS Staff

Ann Kuhlman, *Director*

Gang Wang, *Associate Director*

Janice Pinkard, *Assistant Director/Adviser*

Susan Buydos, *Assistant Director/Adviser*

Sarah Solarski, *Assistant Director/Adviser*

Elisabeth Kennedy, *Assistant Director/Adviser*

Monica Weeks, *Assistant Director/Adviser*

Warrena Wilkinson, *Resource Coordinator*

Erin Gustafson, *Senior Administrative Assistant*

Sarah Henderson, *Senior Administrative Assistant*

Margaret Valentino, *Senior Administrative Assistant*

OFFICE OF INTERNATIONAL STUDENTS AND SCHOLARS  
421 TEMPLE STREET  
YALE UNIVERSITY  
NEW HAVEN, CT 06511

TELEPHONE: (203) 432-2305

FAX: (203) 432-7166

Email: [oiss@yale.edu](mailto:oiss@yale.edu)

Web: [www.oiss.yale.edu](http://www.oiss.yale.edu)

An electronic copy of this report can be downloaded at: <http://www.oiss.yale.edu/about/stats.htm>