

ANNUAL REPORT
INTERNATIONAL STUDENTS AND SCHOLARS
AT YALE UNIVERSITY
2007–2008



PREPARED BY

OFFICE OF INTERNATIONAL STUDENTS AND SCHOLARS

TABLE OF CONTENTS

Introduction	3
International Students	
Comparative Data from 1998-2007	
Annual Enrollment	4
Percentages of Enrollment	4
Enrollment by School	5
Fall 2007 Data	
By School	5
By School and Gender	6
Percentage of Enrollment by School	6
By School and Country	7-10
By World Region	11-20
Top Ten Countries	21
By Country of Citizenship	22-24
Optional Practical Training	25
English Language Institute Enrollments	25
International Scholars	
International Scholars, 1996—2007	26
Academic Year 2006-2007	
By School	27
By Department or Unit	28
Top Ten Sending Countries	29
By Country and World Region	30
By World Region	31
Leading Institutions Hosting International Scholars	32
OISS Programs and Services	38

INTRODUCTION

The Office of International Students and Scholars is pleased to provide the Yale University community with the annual report of international student and scholar statistics. This report includes the Fall 2007 international student statistics and the international scholar statistics for the academic year 2006-2007.

The number of international students at Yale in Fall 2007 increased slightly (1.9%) to 1803 individuals from 102 countries, representing 16% of the Yale student population and the largest international student enrollment in Yale's history. The distribution of international students closely resembles the distribution of students in the 2006-2007 academic year.

▪ China 300 ▪ Canada 215 ▪ Korea 152 ▪ India 130 ▪ Germany 77

International scholars (researchers, visiting faculty and fellows) continue to affiliate with Yale University in large numbers. The total number for the academic year 2006-2007 remains at a level similar to the previous years with a total of 1828 scholars from 99 nations. The top sender countries are the same as the student list, but in a different order.

▪ China 375 ▪ Germany 127 ▪ Canada 121 ▪ Korea 118 ▪ India 110

The number of international scholars has more than doubled over the last decade and Yale University remains in the top ten U.S. institutions hosting international scholars (Open Doors, 2006, released in December 2007 on line at <http://opendoors.iienetwork.org/>)

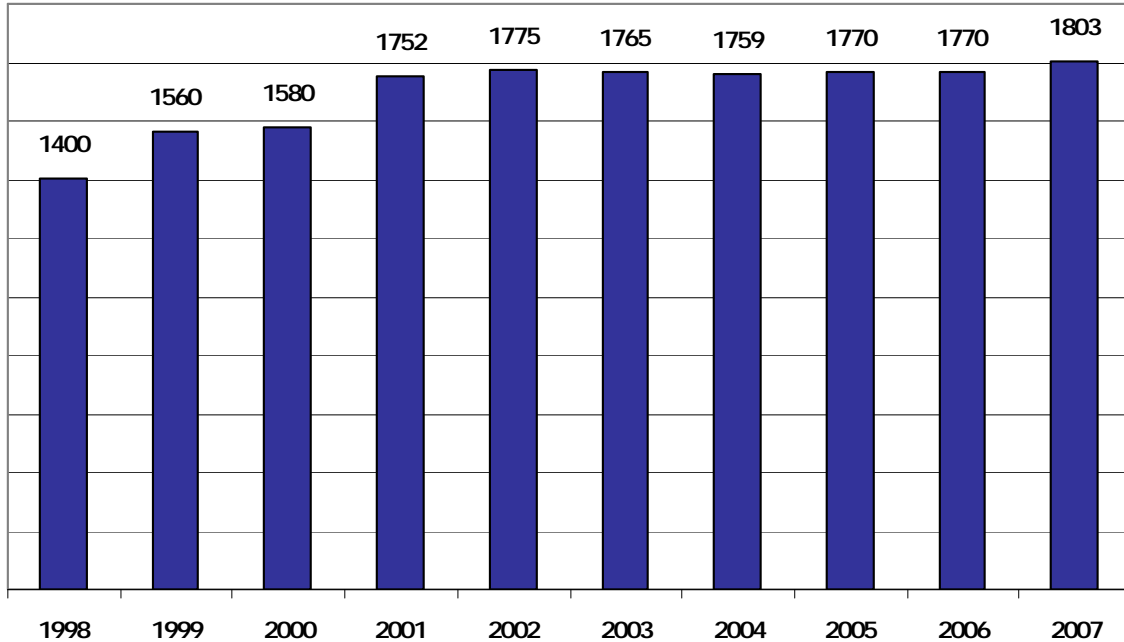
Managing the international student and scholar data and complying with the federally mandated requirements is an extremely time-consuming activity for OISS. I am most grateful to my colleagues both for their efforts in meeting our institutional reporting responsibilities and ensuring that our data is current and correct. Special thanks go to OISS Associate Director, Gang Wang and SEVIS Coordinator, Sarah Solarski for their efforts in managing the data and compiling this report.

This report also includes a list of the current programs and services provided by OISS. Since the opening of the International Center in November 2005, the number of offerings has expanded significantly and increasing numbers of international students and scholars are using the Center and participating in its activities.

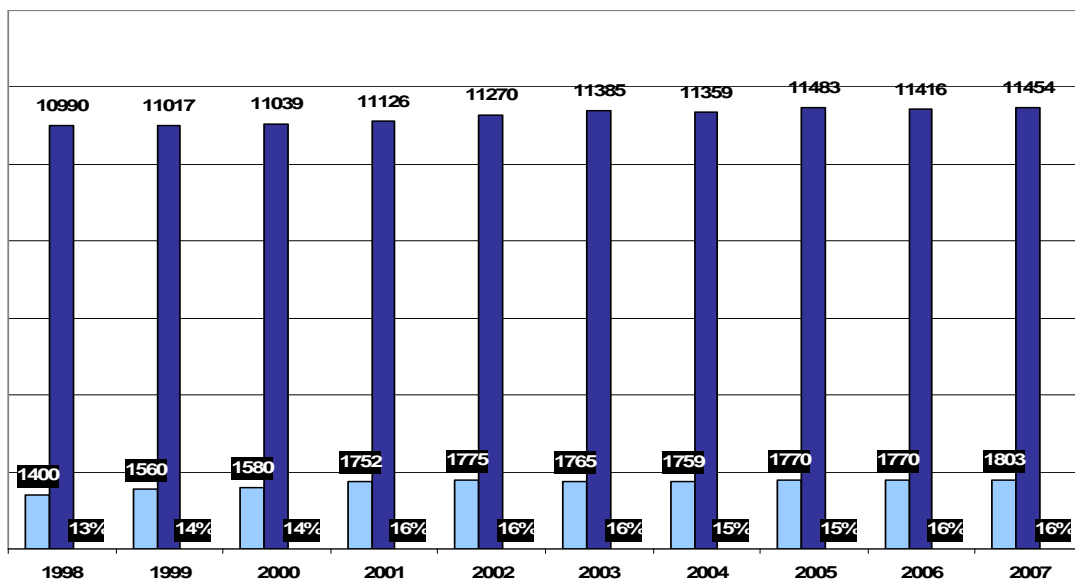
Ann Kuhlman
December 2007

*The international student and scholars counts in this report include individuals at Yale on non-immigrant visas, not including persons who come to Yale in tourist status (B-1, B2, WB and WT). These figures do not include U.S. citizens or permanent residents.

INTERNATIONAL STUDENTS ANNUAL ENROLLMENT, 1998-2007



INTERNATIONAL STUDENTS PERCENTAGE OF YALE TOTAL ENROLLMENT

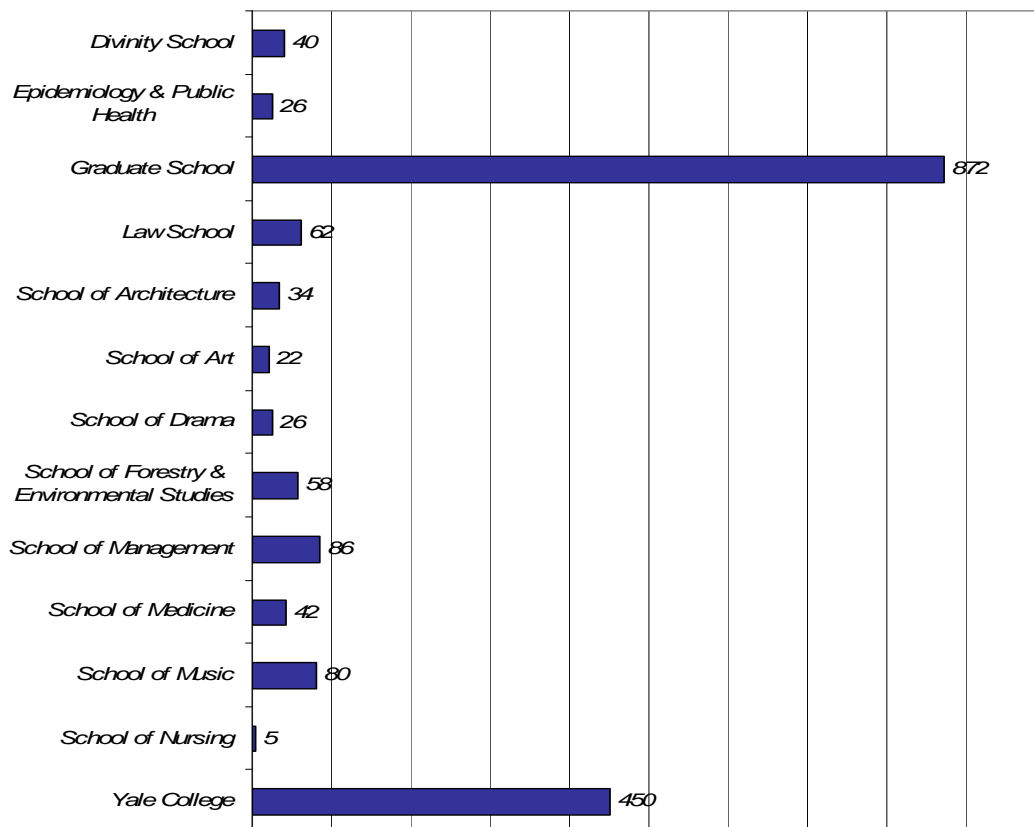


INTERNATIONAL STUDENTS BY SCHOOL*, FALL 2007

School	1998	1999	2000	2001	2002	2003	2004	2005	2006	2007
Divinity School	15	25	39	51	44	47	47	39	36	40
Epidemiology & Public Health	31	43	21	23	24	24	27	31	22	26
Graduate School*	666	752	726	794	788	819	864	850	846	872*
Law School	44	53	66	70	66	63	55	74	73	62
School of Architecture	25	34	32	43	48	34	27	37	40	34
School of Art	15	15	16	19	11	14	16	16	21	22
School of Drama	13	14	20	25	21	18	14	14	19	26
School of Forestry & Environmental Studies	52	55	66	70	73	57	60	68	67	58
School of Management	90	109	128	167	183	137	102	88	86	86
School of Medicine (including PA)	15	22	14	21	26	25	23	27	35	42
School of Music	68	77	72	73	68	62	68	80	81	80
School of Nursing	5	5	10	9	8	9	10	7	4	5
Yale College	361	356	370	387	415	456	446	439	440	450
Total	1400	1560	1580	1752	1775	1765	1759	1770	1770	1803

Note: *This figure include special and non-degree students *117 of 872 graduate students are non-degree students in the Division of Special Registration

INTERNATIONAL STUDENTS BY SCHOOL, FALL 2007



INTERNATIONAL STUDENTS BY SCHOOL AND GENDER, FALL 2007

School	Female	Male	Total
Divinity School	16	24	40
Epidemiology & Public Health	19	7	26
Graduate School	357	515	872
Law School	25	37	62
School of Architecture	16	18	34
School of Art	11	11	22
School of Drama	16	10	26
School of Forestry & Environmental Studies	29	29	58
School of Management	28	58	86
School of Medicine (including PA)	26	16	42
School of Music	45	35	80
School of Nursing	5		5
Yale College	213	237	450
Total	806	997	1803

INTERNATIONAL STUDENTS AS A PERCENTAGE OF SCHOOL ENROLLMENT FALL 2007

School	Int'l Students	Total Students	Percentage of Total Enrollment
Divinity School	40	392	10.2%
Epidemiology & Public Health	26	190	13.7%
Graduate School	872	2678	32.6%
Law School	62	664	9.3%
School of Architecture	34	207	16.4%
School of Art	22	119	18.5%
School of Forestry & Environmental Studies	58	214	27.1%
School of Management	86	418	20.6%
School of Medicine - MD	39	455	8.0%
School of Medicine - P.A.	3	99	3.0%
School of Music	80	214	37.4%
School of Nursing	5	293	1.7%
School of Drama	26	200	13.0%
Yale College	450	5311	8.5%
TOTAL	1803	11454	15.7%

GRADUATE SCHOOL OF ARTS AND SCIENCES STUDENTS BY COUNTRY OF CITIZENSHIP FALL 2007

Country	Total	Country	Total
Argentina	6	Korea, South	47
Armenia	1	Kyrgyzstan	1
Australia	15	Lebanon	3
Austria	2	Macau	1
Bahrain	1	Madagascar	1
Bangladesh	3	Malaysia	2
Belarus	2	Mauritius	2
Belgium	5	Mexico	10
Brazil	17	Moldova	1
Bulgaria	7	Mongolia	1
Canada	83	Nepal	1
Chile	8	Netherlands	3
China	196	New Zealand	10
Colombia	10	Nigeria	2
Costa Rica	1	Pakistan	5
Croatia	4	Peru	3
Cyprus	1	Philippines	1
Czech Republic	1	Poland	5
Denmark	4	Portugal	1
Finland	2	Romania	9
France	12	Russia	12
Georgia	1	Serbia	5
Germany	57	Singapore	16
Ghana	1	South Africa	4
Greece	11	Spain	18
Guatemala	1	Sri Lanka	5
Hong Kong	5	St. Vincent and The Grenadines	1
Hungary	1	Sweden	7
Iceland	1	Switzerland	5
India	58	Taiwan	23
Indonesia	1	Thailand	3
Iran	5	Trinidad & Tobago	1
Ireland	9	Turkey	24
Israel	17	Ukraine	4
Italy	28	United Kingdom	32
Jamaica	3	Venezuela	1
Japan	18	Vietnam	1
Kenya	3	Total	872

PROFESSIONAL SCHOOLS STUDENTS BY COUNTRY OF CITIZENSHIP FALL 2007

Architecture	
Country	Total
Canada	5
China	5
Ecuador	1
Greece	1
India	2
Italy	1
Japan	1
Kenya	1
Korea, South	7
Malaysia	1
Mexico	1
Netherlands	1
Pakistan	1
Romania	2
Singapore	1
Turkey	2
United Kingdom	1
Total	34

Art	
Country	Total
Australia	1
Belgium	1
Canada	3
China	2
Czech Republic	1
Ghana	1
Israel	1
Korea, South	6
Singapore	1
Sweden	1
Taiwan	1
United Kingdom	3
Total	22

Divinity School	
Country	Total
Australia	1
Canada	4
Germany	3
India	2
Kenya	2
Korea, South	17
Mexico	1
Pakistan	1
Poland	1
Portugal	1
Taiwan	1
United Kingdom	6
Total	40

School of Drama	
Country	Total
Brazil	1
Canada	2
China	1
France	1
Guatemala	1
Hong Kong	1
Indonesia	1
Japan	1
Korea, South	8
Mexico	1
Norway	1
Peru	1
South Africa	1
Spain	1
Taiwan	2
United Kingdom	2
Total	26

Forestry & Environmental Science	
Country	Total
Australia	2
Brazil	2
Burma	1
Canada	2
Chile	1
China	13
Colombia	4
Congo, Republic of The	1
Ecuador	1
Ghana	1
Hong Kong	1
India	4
Indonesia	1
Israel	1
Japan	3
Kenya	3
Korea, South	1
Mexico	2
Nepal	4
Nigeria	3
Pakistan	2
Philippines	1
Singapore	1
Taiwan	1
Tanzania	1
Uruguay	1
Total	58

PROFESSIONAL SCHOOLS STUDENTS BY COUNTRY OF CITIZENSHIP, FALL 2007

Law School	
Country	Total
Argentina	3
Australia	1
Brazil	2
Bulgaria	1
Canada	12
Chile	2
China	7
Croatia	1
Czech Republic	1
Dominican Republic	1
France	2
Germany	4
Greece	1
India	1
Israel	7
Italy	1
Korea, South	3
Malaysia	1
New Zealand	1
Pakistan	1
Serbia	1
Switzerland	1
Taiwan	2
Thailand	1
Uganda	1
United Kingdom	2
Zambia	1
Total	62

Nursing	
Country	Total
Canada	1
China	1
Colombia	1
Korea, South	2
Total	5

Medicine PA	
Country	Total
Canada	1
Colombia	1
Uganda	1
Total	3

Management	
Country	Total
Bulgaria	1
Canada	8
China	15
Colombia	1
Costa Rica	2
Croatia	1
Dominican Republic	1
Ecuador	1
Germany	1
India	30
Indonesia	1
Italy	1
Kenya	1
Korea, South	6
Mexico	8
Netherlands	1
Taiwan	2
Turkey	2
United Kingdom	2
Venezuela	1
Total	86

Medicine	
Country	Total
Bahamas, The	1
Canada	8
China	2
Ghana	6
Greece	1
Jamaica	2
Kenya	3
Korea, South	1
Macedonia, The Republic of	1
Nepal	1
Nigeria	5
Philippines	1
Romania	1
Serbia	1
Taiwan	1
Trinidad & Tobago	2
United Kingdom	1
Zimbabwe	1
Total	39

Music	
Country	Total
Australia	2
Bulgaria	2
Canada	11
China	9
Colombia	1
France	2
Germany	1
Hong Kong	1
Japan	1
Korea, South	24
Latvia	1
Lithuania	1
Mexico	1
Netherlands	1
Poland	1
Romania	1
Russia	1
Serbia	1
Singapore	1
Spain	5
Taiwan	8
Ukraine	2
United Kingdom	2
Total	80

EPH	
Country	Total
Australia	1
Brazil	1
Canada	2
China	4
Germany	1
Ghana	2
India	4
Nigeria	1
Pakistan	1
Singapore	1
Taiwan	1
Tanzania	3
Uganda	1
United Kingdom	1
Zimbabwe	2
Total	26

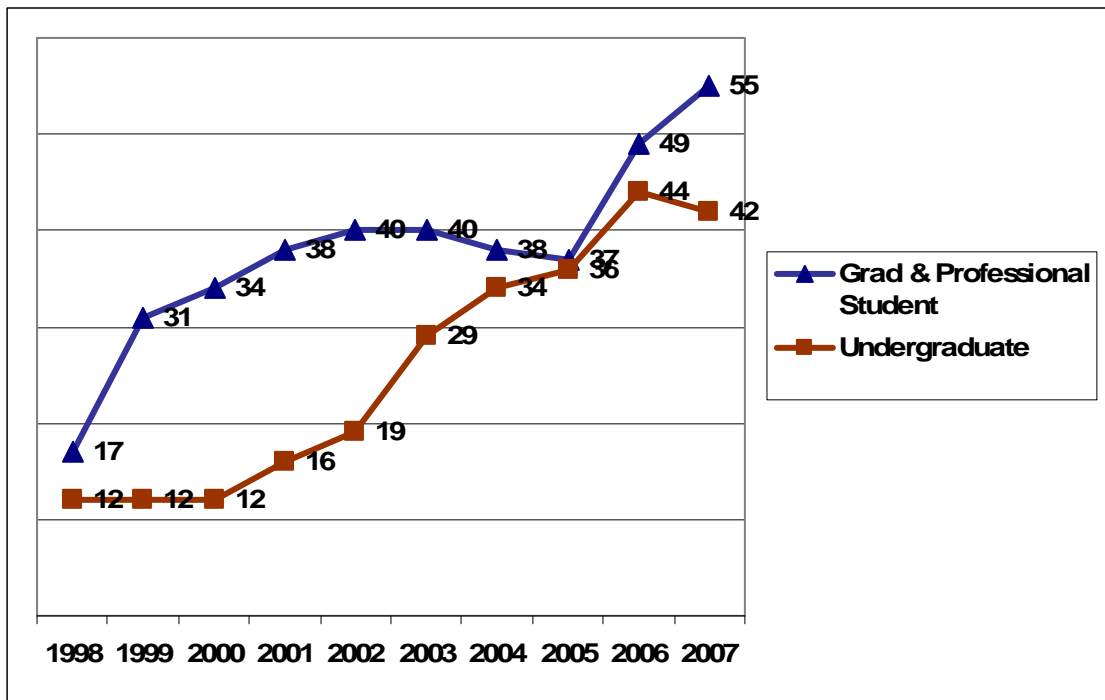
YALE COLLEGE STUDENTS BY COUNTRY OF CITIZENSHIP, FALL 2007

Country	Total	Country	Total
Antigua and Barbuda	1	Kyrgyzstan	1
Argentina	1	Macedonia	1
Australia	11	Malaysia	5
Austria	2	Mauritius	2
Bahamas, The	1	Mexico	8
Bangladesh	4	Moldova	1
Bolivia	2	Nepal	1
Bosnia and Herzegovina	1	Netherlands	1
Brazil	7	New Zealand	2
Bulgaria	6	Nigeria	2
Canada	73	Norway	1
Chile	1	Pakistan	10
China	45	Paraguay	1
Colombia	5	Peru	5
Cyprus	1	Philippines	1
Czech Republic	1	Poland	2
Denmark	2	Romania	4
Ecuador	1	Russia	6
El Salvador	1	Rwanda	1
Estonia	1	Saint Kitts and Nevis	1
Ethiopia	3	Serbia	3
France	1	Singapore	11
Germany	10	Slovakia	2
Ghana	6	South Africa	7
Greece	6	Spain	3
Guyana	1	Sri Lanka	4
Honduras	1	Sweden	1
Hong Kong	4	Taiwan	3
Hungary	2	Tanzania	4
India	29	Thailand	4
Indonesia	1	Trinidad & Tobago	2
Iran	2	Turkey	17
Ireland	5	Ukraine	2
Israel	6	United Kingdom	19
Italy	1	Uruguay	1
Jamaica	5	Venezuela	1
Japan	5	Vietnam	6
Jordan	2	Zimbabwe	5
Kenya	12	Total	450
Korea, South	30		

AFRICA: STUDENT ENROLLMENT, FALL 2007

Country	Graduate & Professional Student	Undergraduate	Total
Congo, Republic of The	1		1
Ethiopia		3	3
Ghana	11	6	17
Kenya	13	12	25
Madagascar	1		1
Mauritius	2	2	4
Nigeria	11	2	13
Rwanda		1	1
South Africa	5	7	12
Tanzania	4	4	8
Uganda	3		3
Zambia	1		1
Zimbabwe	3	5	8
Total	55	42	97

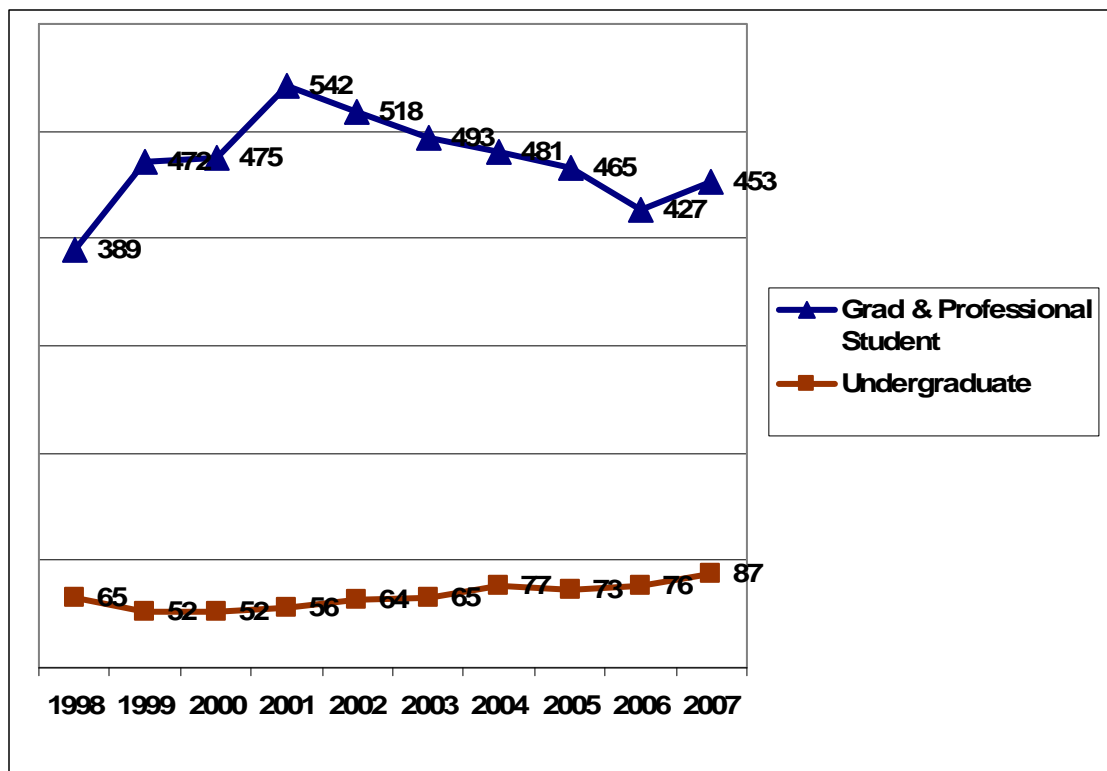
AFRICA REGIONAL TRENDS 1998-2007



EAST ASIA: STUDENT ENROLLMENT, FALL 2007

Country	Graduate & Professional Student	Undergraduate	Total
China	255	45	300
Hong Kong	8	4	12
Japan	24	5	29
Korea, South	122	30	152
Macau	1		1
Mongolia	1		1
Taiwan	42	3	45
Total	453	87	540

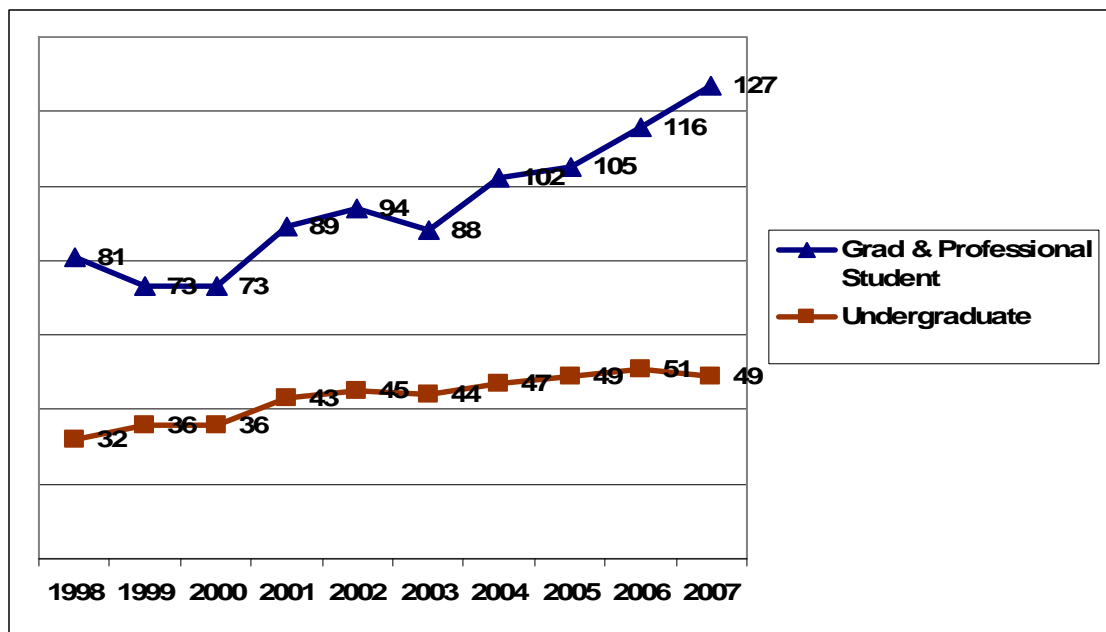
EAST ASIA REGIONAL TRENDS 1998-2007



SOUTH CENTRAL ASIA: STUDENT ENROLLMENT FALL 2007

Country	Graduate & Professional Student	Undergraduate	Total
Bangladesh	3	4	7
India	101	29	130
Kyrgyzstan	1	1	2
Nepal	6	1	7
Pakistan	11	10	21
Sri Lanka	5	4	9
Total	127	49	176

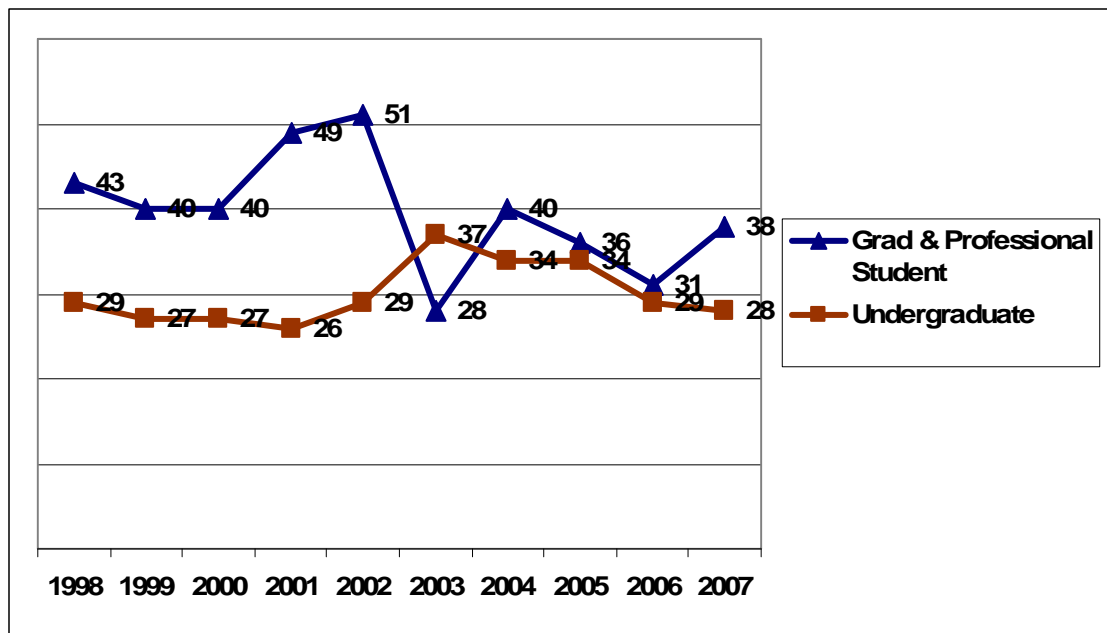
SOUTH CENTRAL ASIA: REGIONAL TRENDS 1998-2007



SOUTH EAST ASIA: STUDENT ENROLLMENT, FALL 2007

Country	Graduate & Professional Student	Undergraduate	Total
Burma	1		1
Indonesia	4	1	5
Malaysia	4	5	9
Philippines	3	1	4
Singapore	21	11	32
Thailand	4	4	8
Vietnam	1	6	7
Total	38	28	66

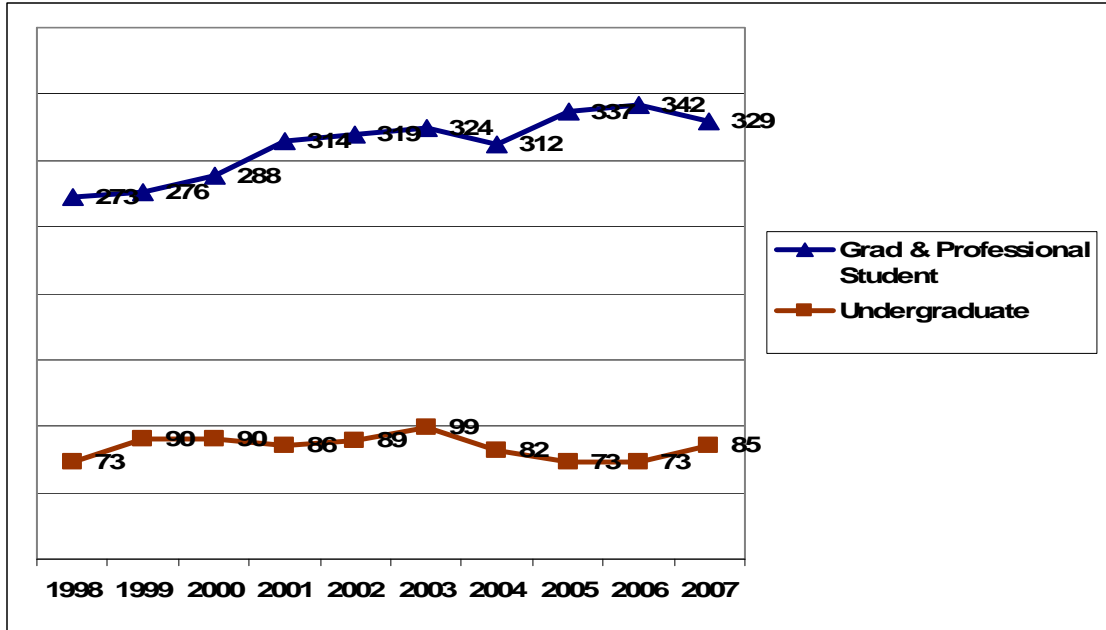
SOUTH EAST ASIA: REGIONAL TRENDS 1998-2007



EUROPE: STUDENT ENROLLMENT, FALL 2007

Country	Graduate & Professional Student	Undergraduate	Total
Armenia	1		1
Austria	2	2	4
Belarus	2		2
Belgium	6		6
Bosnia and Herzegovina		1	1
Bulgaria	11	6	17
Croatia	6		6
Cyprus	1	1	2
Czech Republic	3	1	4
Denmark	4	2	6
Estonia		1	1
Finland	2		2
France	17	1	18
Georgia	1		1
Germany	67	10	77
Greece	14	6	20
Hungary	1	2	3
Iceland	1		1
Ireland	9	5	14
Italy	31	1	32
Latvia	1		1
Lithuania	1		1
Macedonia, The Republic of	1	1	2
Moldova	1	1	2
Netherlands	6	1	7
Norway	1	1	2
Poland	7	2	9
Portugal	2		2
Romania	13	4	17
Russia	13	6	19
Serbia		2	2
Slovakia	24	3	27
Spain	8	1	9
Sweden	6		6
Switzerland	6	2	8
Ukraine	52	19	71
United Kingdom	8	3	11
Total	329	85	414

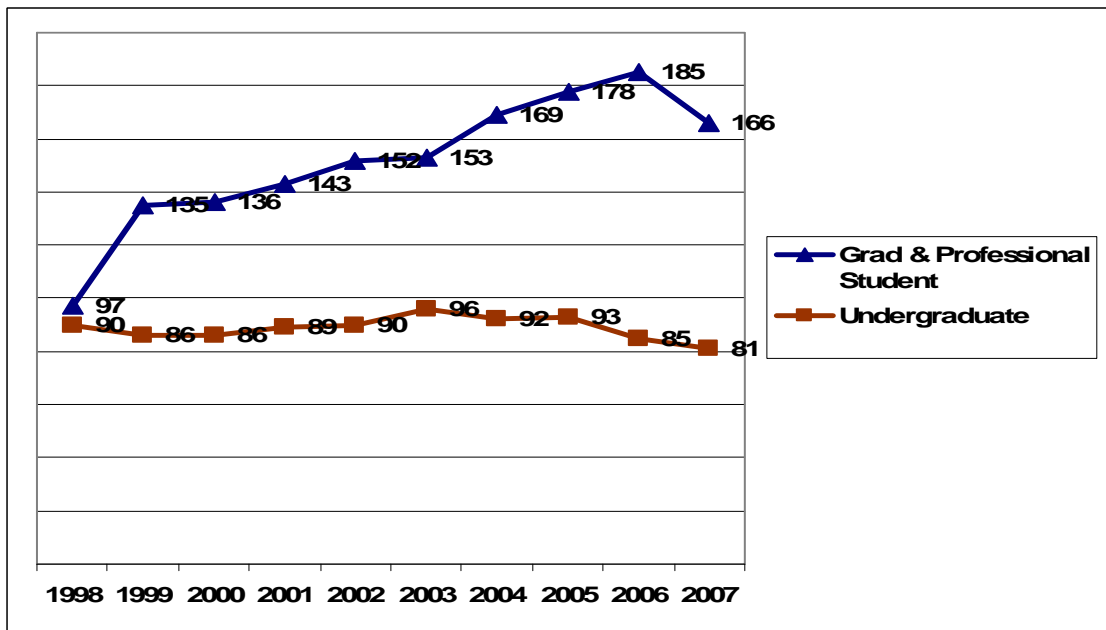
EUROPE: REGIONAL TRENDS 1998-2007



NORTH AMERICA: STUDENT ENROLLMENT, FALL 2007

Country	Graduate & Professional Student	Undergraduate	Total
Canada	142	73	215
Mexico	24	8	32
Total	166	81	247

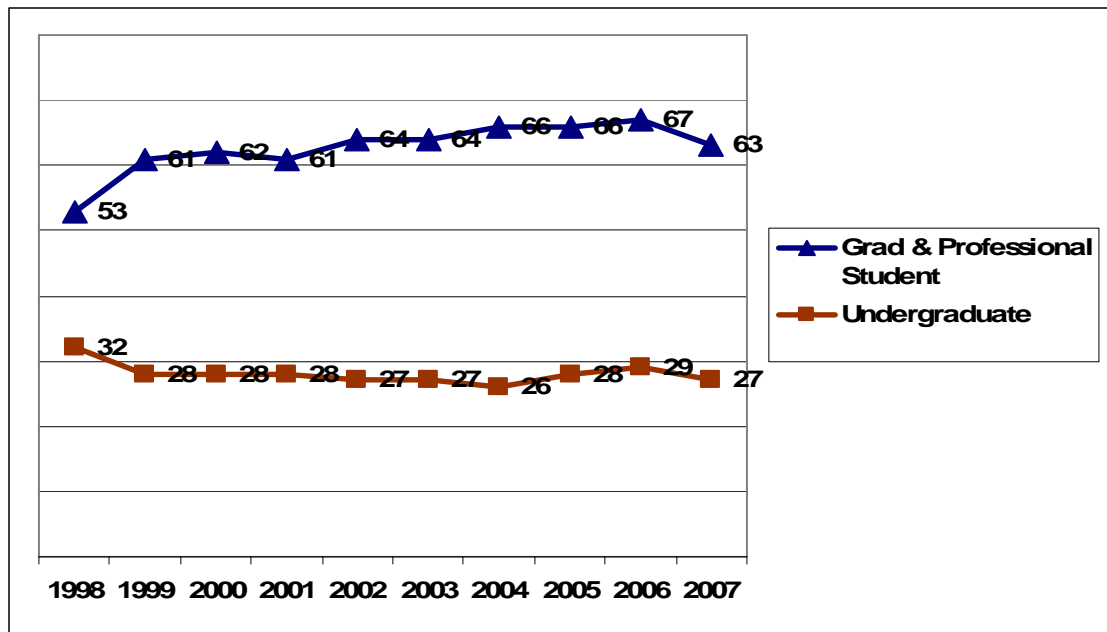
NORTH AMERICA: REGIONAL TRENDS 1998-2007



MIDDLE EAST: STUDENT ENROLLMENT, FALL 2007

Country	Graduate & Professional Student	Undergraduate	Total
Bahrain	1		1
Iran	5	2	7
Israel	26	6	32
Jordan		2	2
Lebanon	3		3
Turkey	28	17	45
Total	63	27	90

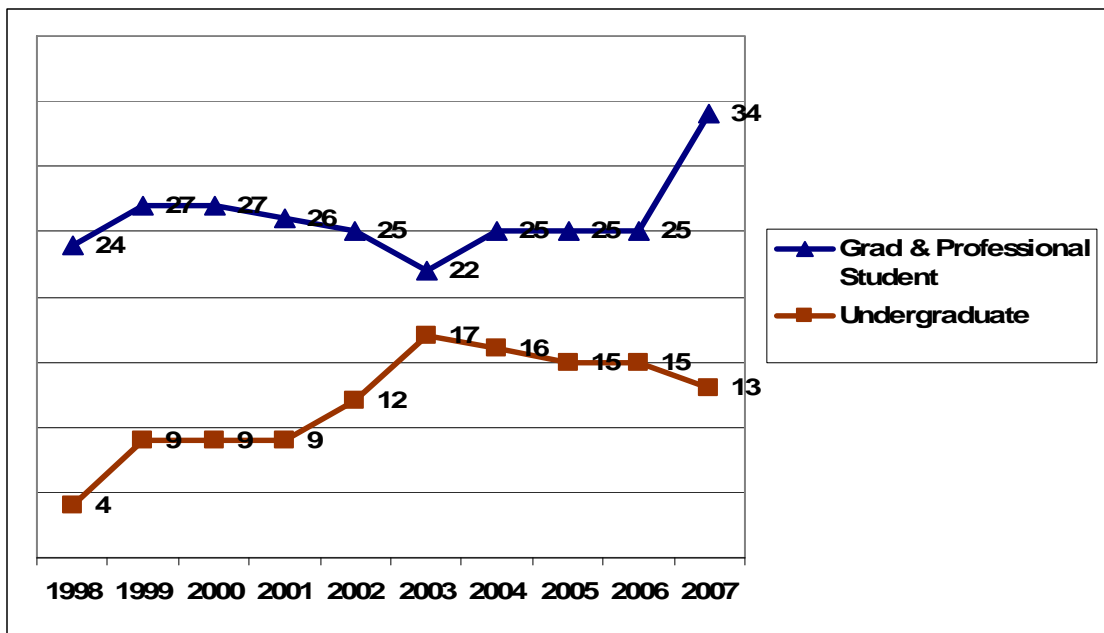
MIDDLE EAST: REGIONAL TRENDS 1998-2007



OCEANIA: STUDENT ENROLLMENT, FALL 2007

Country	Graduate & Professional Student	Undergraduate	Total
Australia	23	11	34
New Zealand	11	2	13
Total	34	13	47

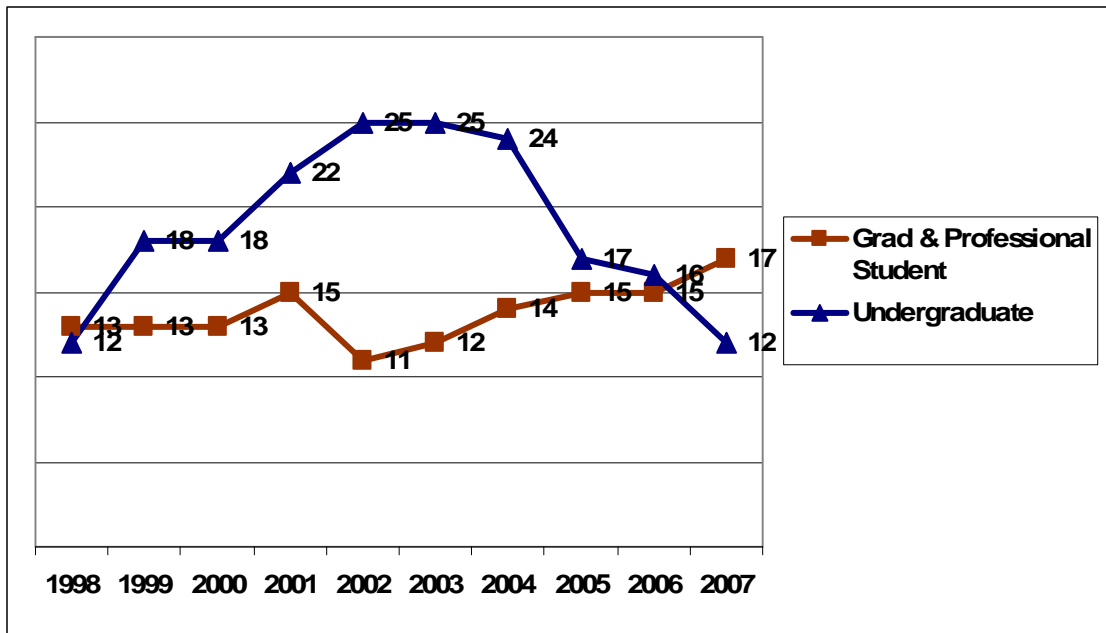
OCEANIA: REGIONAL TRENDS 1998-2007



THE CARIBBEAN & CENTRAL AMERICA: STUDENT ENROLLMENT, FALL 2007

Country	Graduate & Professional Student	Udergraduate	Total
Antigua and Barbuda		1	1
Bahamas, The	1	1	2
Costa Rica	3		3
Dominican Republic	2		2
El Salvador		1	1
Guatemala	2		2
Honduras		1	1
Jamaica	5	5	10
Saint Kitts and Nevis		1	1
St. Vincent and The Grenadines	1		1
Trinidad & Tobago	3	2	5
Total	17	12	29

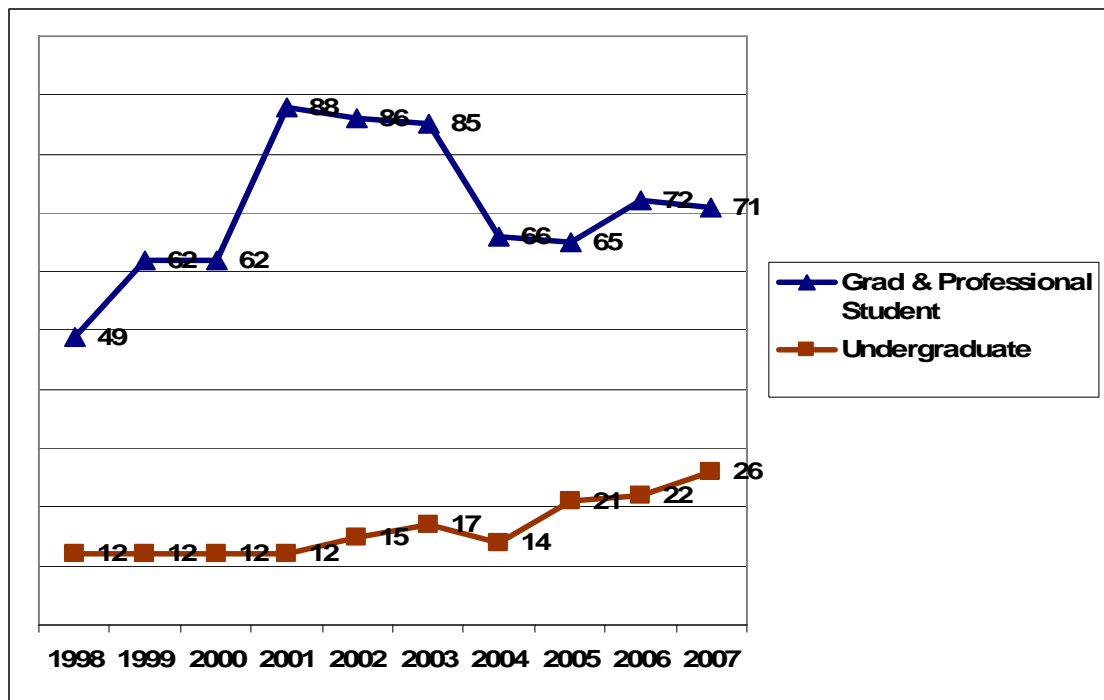
THE CARIBBEAN & CENTRAL AMERICA: REGIONAL TRENDS 1998-2007



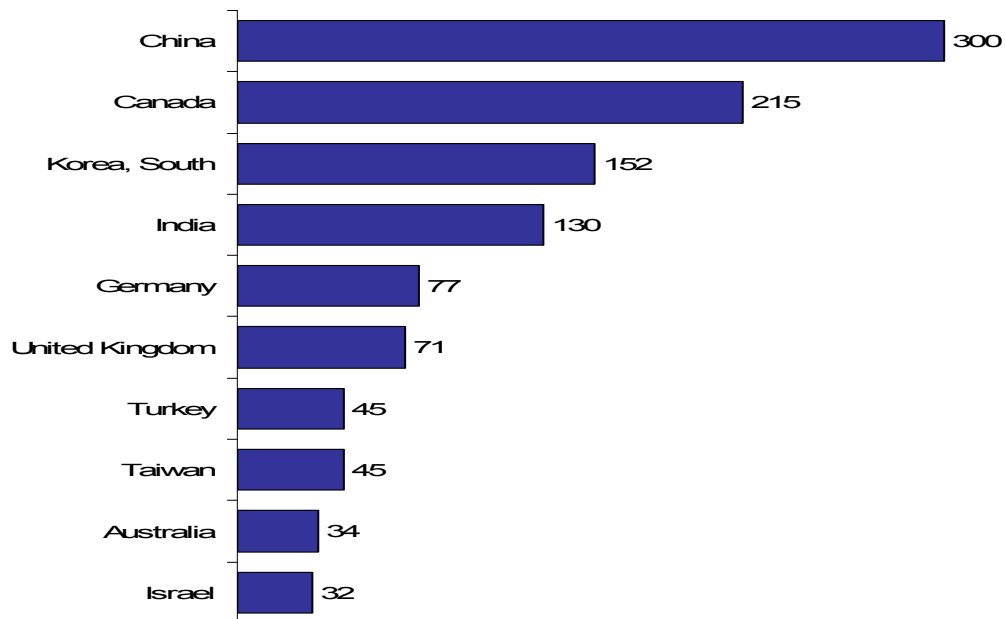
SOUTH AMERICA: STUDENT ENROLLMENT, FALL 2007

Country	Graduate & Professional Student	Undergraduate	Total
Argentina	9	1	10
Bolivia		2	2
Brazil	23	7	30
Chile	11	1	12
Colombia	18	5	23
Ecuador	3	1	4
Guyana		1	1
Paraguay		1	1
Peru	4	5	9
Uruguay	1	1	2
Venezuela	2	1	3
Total	71	26	97

SOUTH AMERICA: REGIONAL TRENDS 1998-2007



INTERNATIONAL STUDENTS TOP TEN COUNTRIES, FALL 2007



INTERNATIONAL STUDENTS TOP TEN COUNTRIES, 2004 - 2007

Country	2006-2007	2005-2006	2004-2005	2003-2004
China	300	290	300	304
Canada	215	240	239	226
Korea, South	152	128	135	141
India	130	118	102	100
Germany	77	70	66	66
United Kingdom	71	68	70	62
Turkey	45	45	45	44
Taiwan	45	41	40	46
Australia	34	27*	29*	31*
Israel	32	35*	29*	27*

* Not in the top ten that year

INTERNATIONAL STUDENTS BY COUNTRY OF CITIZENSHIP FALL 2007

Country	Graduate & Professional Student	Undergraduate	Grand Total
Antigua and Barbuda		1	1
Argentina	9	1	10
Armenia	1		1
Australia	23	11	34
Austria	2	2	4
Bahamas, The	1	1	2
Bahrain	1		1
Bangladesh	3	4	7
Belarus	2		2
Belgium	6		6
Bolivia		2	2
Bosnia and Herzegovina		1	1
Brazil	23	7	30
Bulgaria	11	6	17
Burma	1		1
Canada	142	73	215
Chile	11	1	12
China	255	45	300
Colombia	18	5	23
Congo, Republic of The	1		1
Costa Rica	3		3
Croatia	6		6
Cyprus	1	1	2
Czech Republic	3	1	4
Denmark	4	2	6
Dominican Republic	2		2
Ecuador	3	1	4
El Salvador		1	1
Estonia		1	1
Ethiopia		3	3
Finland	2		2
France	17	1	18
Georgia	1		1
Germany	67	10	77
Ghana	11	6	17
Greece	14	6	20
Guatemala	2		2
Guyana		1	1

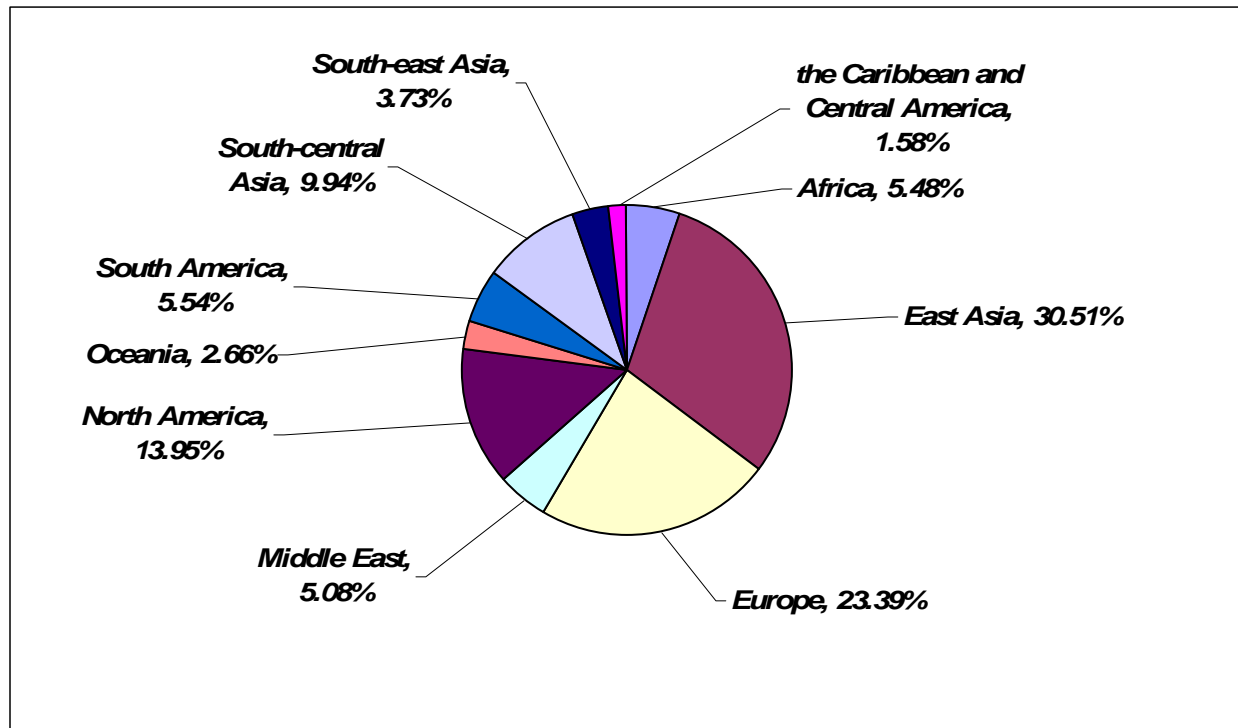
Continued from previous page

Honduras		1	1
Hong Kong	8	4	12
Hungary	1	2	3
Iceland	1		1
India	101	29	130
Indonesia	4	1	5
Iran	5	2	7
Ireland	9	5	14
Israel	26	6	32
Italy	31	1	32
Jamaica	5	5	10
Japan	24	5	29
Jordan		2	2
Kenya	13	12	25
Korea, South	122	30	152
Kyrgyzstan	1	1	2
Latvia	1		1
Lebanon	3		3
Lithuania	1		1
Macau	1		1
Macedonia, The Republic of	1	1	2
Madagascar	1		1
Malaysia	4	5	9
Mauritius	2	2	4
Mexico	24	8	32
Moldova	1	1	2
Mongolia	1		1
Nepal	6	1	7
Netherlands	6	1	7
New Zealand	11	2	13
Nigeria	11	2	13
Norway	1	1	2
Pakistan	11	10	21
Paraguay		1	1
Peru	4	5	9
Philippines	3	1	4
Poland	7	2	9
Portugal	2		2
Romania	13	4	17
Russia	13	6	19
Rwanda		1	1
Saint Kitts and Nevis		1	1
Serbia	8	3	11
Singapore	21	11	32
Slovakia		2	2
South Africa	5	7	12

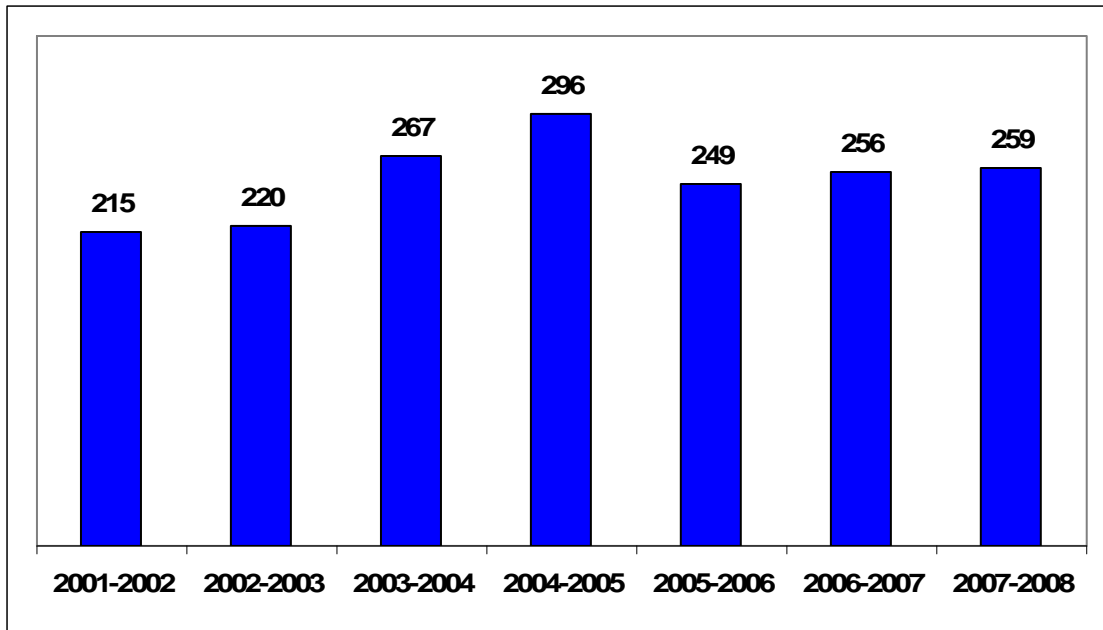
Continued from previous page

Spain	24	3	27
Sri Lanka	5	4	9
St. Vincent and The Grenadines	1		1
Sweden	8	1	9
Switzerland	6		6
Taiwan	42	3	45
Tanzania	4	4	8
Thailand	4	4	8
Trinidad & Tobago	3	2	5
Turkey	28	17	45
Uganda	3		3
Ukraine	6	2	8
United Kingdom	52	19	71
Uruguay	1	1	2
Venezuela	2	1	3
Vietnam	1	6	7
Zambia	1		1
Zimbabwe	3	5	8
Grand Total	1353	450	1803

PERCENTAGE BY WORLD REGION FALL 2007

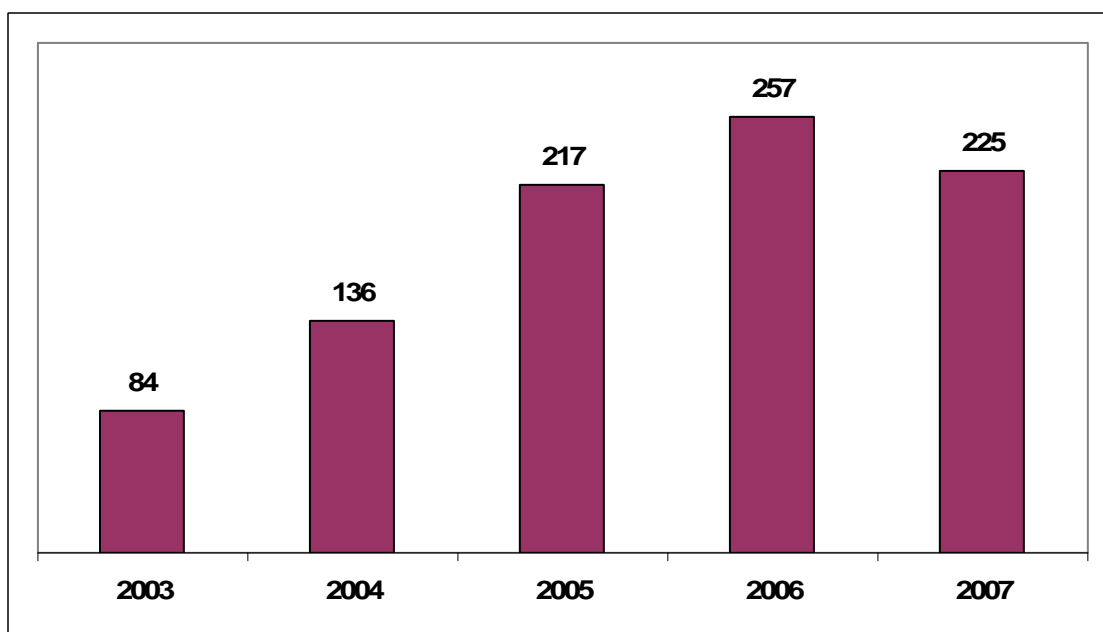


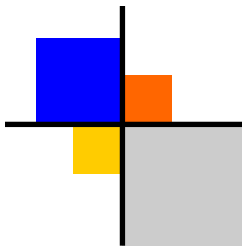
OPTIONAL PRACTICAL TRAINING* AFTER GRADUATION SEVEN YEAR TREND



* International students in F or J status may remain in the U.S. under Yale's visa sponsorship after graduation for up to 12 months (18 months for J) to engage in training related to their program of study.

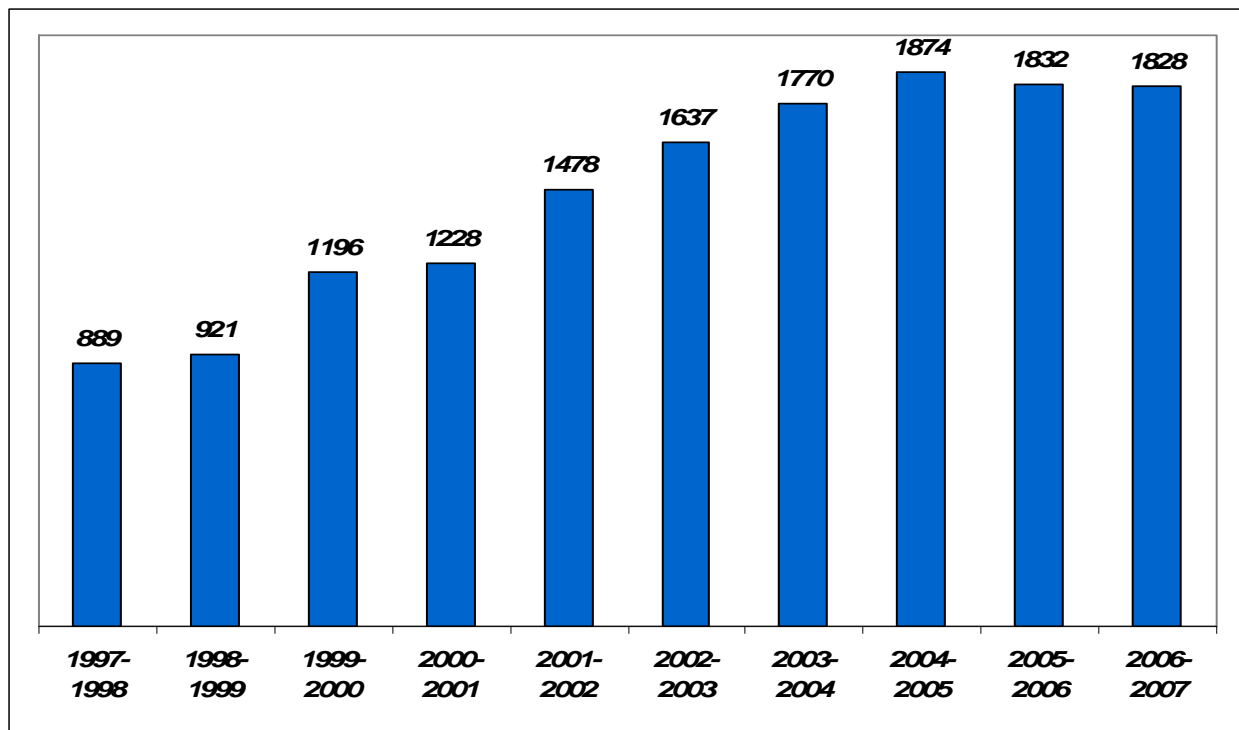
STUDENTS AT ENGLISH LANGUAGE INSTITUTE 2002-2007 (SUMMER ONLY)





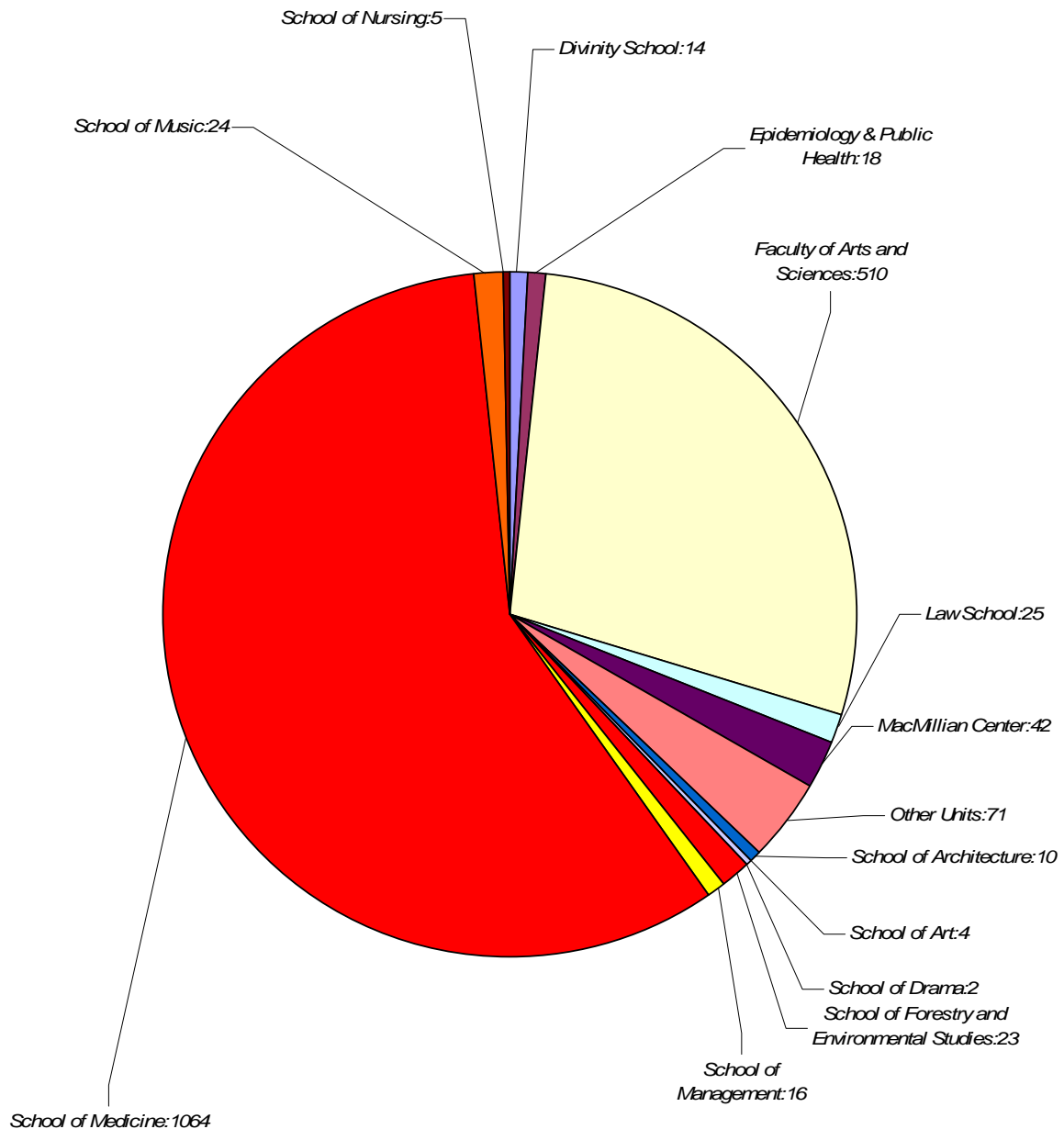
INTERNATIONAL SCHOLARS* AT YALE 2006-2007

INTERNATIONAL SCHOLARS 1997-2007



* Scholar statistics are compiled at the end of each academic year and represent individuals who have spent at least some part of the academic year at Yale in a non-immigrant classification. These figures do not include individuals who come to Yale in tourist or visitor status.

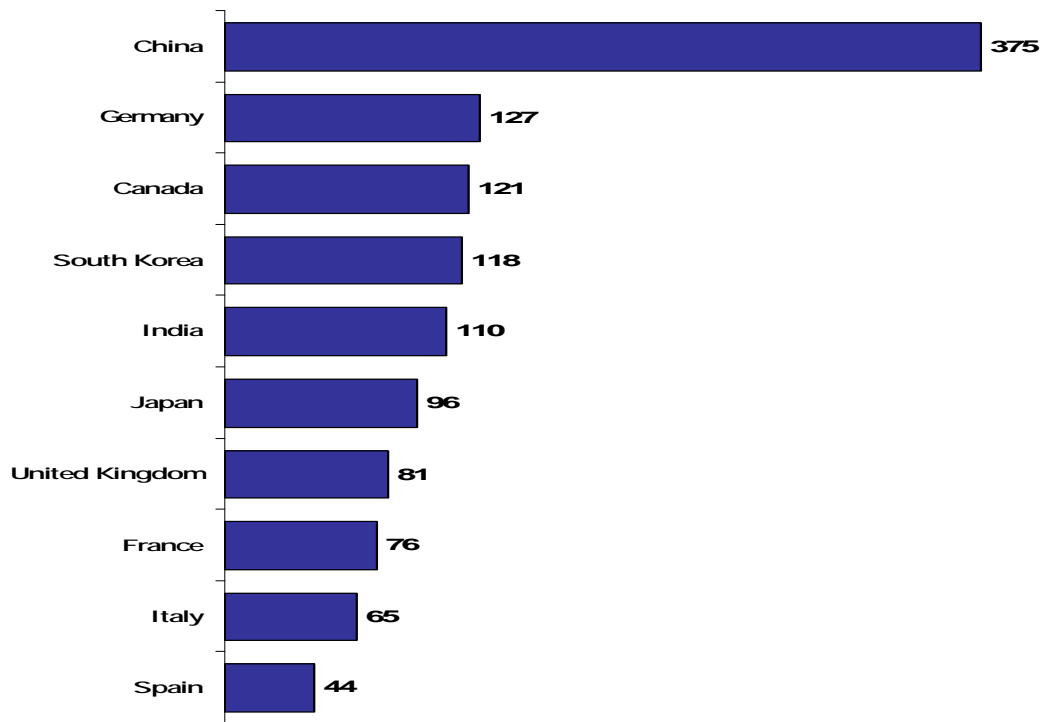
INTERNATIONAL SCHOLARS BY SCHOOL 2006-2007



INTERNATIONAL SCHOLARS BY DEPARTMENT OR UNIT 2006-2007

Department	Total	Department	Total	Department	Total
Agrarian Studies	5	Grants and Contracts	1	Near Eastern Languages and Civilizations	7
Anesthesiology	17	Haskins Labs	3	Neurobiology	32
Anthropology	3	History	9	Neurology	19
Applied Physics	11	History of Art	3	Neurosurgery	27
Architecture	10	History of Medicine	2	Nursing	5
Astronomy	11	Immunobiology	62	Obstetrics & Gynecology	68
Athletics	3	Immunology	1	Ophthalmology & Visual Science	13
Beinecke Library	19	Information Technology Services	4	Orthopaedics & Rehabilitation	15
Biomedical Engineering	4	Institute for Social and Policy Studies	3	Pathology	32
British Art Center	16	Institute of Sacred Music	3	Peabody Museum	2
Cancer Center	4	Internal Medicine	28	Pediatrics	28
Cardiology	3	Internal Medicine/Allergy	1	Pharmacology	65
Cell & Molecular Physiology	30	Internal Medicine/Cardiovascular	14	Philosophy	6
Cell Biology	52	Internal Medicine/Digestive Diseases	19	Physics	28
Center for the Study of Globalization	3	Internal Medicine/Endocrinology	27	Physiology	2
Chemical Engineering	14	Internal Medicine/Geriatrics	1	Political Science	13
Chemistry	46	Internal Medicine/Infectious Diseases	8	Psychiatry	70
Child Study Center	23	Internal Medicine/Medical Oncology	3	Psychology	13
Classics	1	Internal Medicine/Nephrology	23	Religious Studies	3
Comparative Literature	5	Internal Medicine/Occupational & Env Medicine	2	School of Art	4
Comparative Medicine	2	Internal Medicine/Pulmonary	19	School of Forestry and Environmental Studies	5
Computer Science	9	Internal Medicine/Rheumatology	26	School of Management	16
Corporate and Foundation Relations	1	International Affairs Office	1	School of Music	22
Dermatology	6	Investments	1	Slavic Languages and Literature	2
Diagnostic Radiology	39	Italian Language and Literature	5	Sociology	11
Divinity School	10	Judaic Studies Program	2	Southeast Asia Studies	2
Drama	3	Keck Biotechnology Resource Laboratory	2	Spanish and Portuguese	6
East Asian Languages and Literature	8	Lab Medicine	14	Statistics	4
East Asian Studies	9	Latin American and Iberian Studies	1	Surgery	50
Ecology and Evolutionary Biology	12	Law School	24	Teacher Preparation Program	1
Economics	27	Linguistics	5	Therapeutic Radiology	20
Electrical Engineering	11	MacMillan Center for International & Area Studies	31	United Nations Studies	2
English	6	Mathematics	12	University Library	13
Epidemiology & Public Health	71	Mechanical Engineering	12	Women & Gender Studies	2
Ethics, Politics and Economics	1	Medical Informatics	1	World Fellows Program	19
Forestry & Environmental Studies	13	Microbial Pathogenesis	35	Yale College/Summer Programs	2
French	8	Molecular Biophysics & Biochemistry	90	Yale University Press	1
Genetics	35	Molecular Medicine	1	Yale-New Haven Teacher's Institute	1
Geology and Geophysics	26	Molecular, Cellular & Developmental Biology	16	YSM Facilities	2
Germanic Languages and Literature	5	Music Department	3	Total	1828

INTERNATIONAL SCHOLARS TOP TEN COUNTRIES 2006-2007



INTERNATIONAL SCHOLARS TOP TEN COUNTRIES 2004-2007

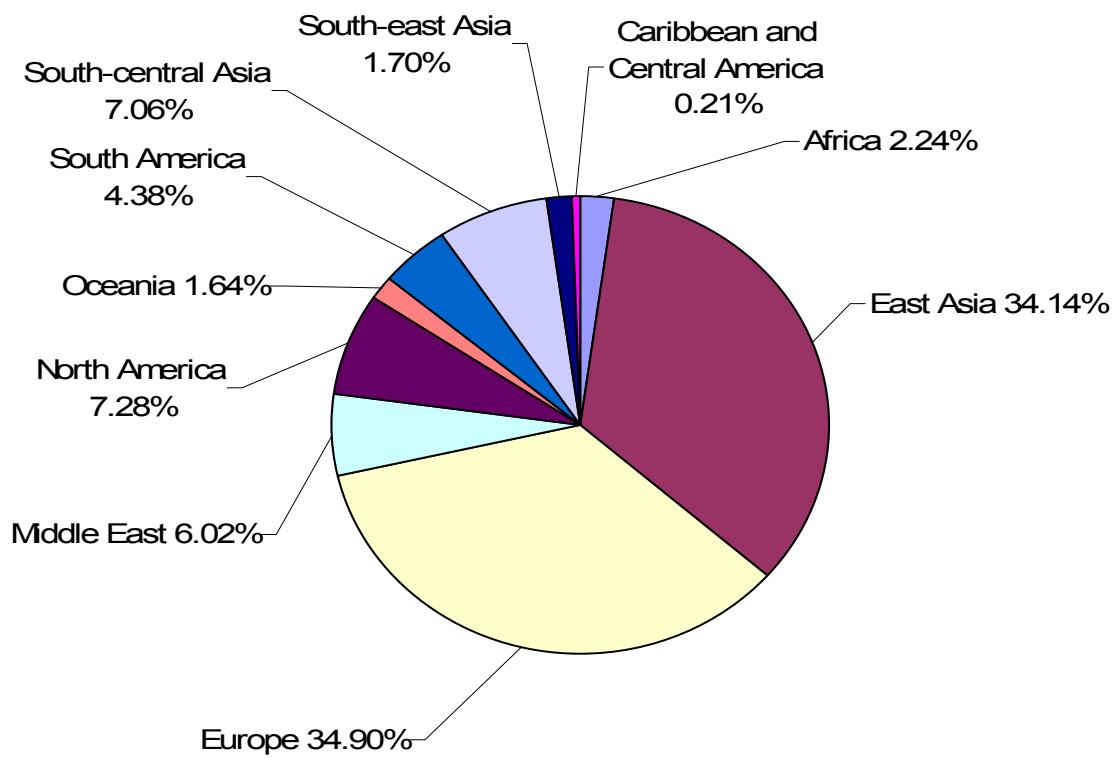
Country	2006-2007	2005-2006	2004-2005	2003-2004
China	375	359	388	355
Germany	127	126	138	148
Canada	121	108	110	95
Korea, South	118	129	104	87
India	110	129	117	112
Japan	96	107	122	120
United Kingdom	81	74	90	97
France	76	75	69	58
Italy	65	58	46*	55*
Spain	44	41	46*	55*

* Not in the top ten that year

INTERNATIONAL SCHOLARS BY WORLD REGION 2006-2007

Africa	Total	South America	Total	Europe	Total
Cameroon	1	Argentina	18	Albania	2
Congo	1	Brazil	38	Armenia	1
Egypt	10	Chile	7	Austria	19
Ethiopia	3	Colombia	8	Belarus	1
Ivory Coast	1	Ecuador	2	Belgium	11
Kenya	3	Paraguay	1	Bulgaria	8
Morocco	2	Peru	2	Croatia	6
Namibia	1	Venezuela	4	Cyprus	2
Nigeria	3	Total	80	Czech Republic	4
South Africa	10	Middle East	Total	Denmark	8
Sudan	1	Iran	7	Estonia	2
Tunisia	2	Israel	40	Finland	6
Uganda	1	Jordan	3	France	76
Zambia	1	Lebanon	11	Georgia	2
Zimbabwe	1	Turkey	43	Germany	127
Total	41	West Bank	1	Greece	19
		Yemen	1	Hungary	8
East Asia	Total	Total	106	Iceland	1
China	375	South-east Asia	Total	Ireland	7
Hong Kong	6	Indonesia	5	Italy	65
Japan	96	Malaysia	3	Kosovo	1
Mongolia	1	Philippines	2	Lithuania	2
South Korea	118	Singapore	5	Luxembourg	1
Taiwan	28	Thailand	12	Netherlands	18
Total	624	Vietnam	4	Norway	9
Caribbean & Central America	Total	Total	31	Poland	14
Bahamas, The	1	South-central Asia	Total	Portugal	11
Barbados	1	Bangladesh	2	Romania	19
Costa Rica	2	India	110	Russia	33
Jamaica	3	Kazakhstan	1	Serbia	4
Netherlands Antilles	1	Nepal	1	Slovak Republic	1
Panama	2	Pakistan	11	Slovakia	2
St. Lucia	1	Sri Lanka	3	Slovenia	1
Trinidad & Tobago	1	Uzbekistan	1	Spain	44
Total	12	Total	129	Sweden	10
Oceania	Total	North America	Total	Switzerland	12
Australia	25	Canada	121	Ukraine	4
New Zealand	5	Mexico	12	United Kingdom	81
Total	30	Total	133	Total	642

INTERNATIONAL SCHOLARS BY WORLD REGION, 2006-2007



LEADING INSTITUTIONS HOSTING INTERNATIONAL SCHOLARS* 2006/07

Rank	Institution	City	State	2004/05
1	Harvard University	Cambridge	MA	3419
2	Stanford University	Stanford	CA	2550
3	University of California -Berkeley	Berkeley	CA	2398
4	Columbia University	New York	NY	2346
5	University of California - Davis	Davis	CA	2261
6	University of California - Los Angeles	Los Angeles	CA	2258
7	University of Pennsylvania	Philadelphia	PA	2162
8	University of California - San Diego	La Jolla	CA	1966
9	University of Washington	Seattle	WA	1954
10	Yale University	New Haven	CT	1828
11	University of California -San Francisco	San Francisco	CA	1701
12	Massachusetts Institute of Technology	Cambridge	MA	1654
13	University of Florida	Gainesville	FL	1610
14	Ohio State University- Main Campus	Columbus	OH	1503
15	University of Southern California	Los Angeles	CA	1465
16	University of Illinois -Urbana-Champaign	Champaign	IL	1438
17	Washington University in St. Louis	St Louis	MO	1415
18	University of Minnesota - Twin Cities	Minneapolis	MN	1337
19	Duke University Medical Center & Health System	Durham	NC	1290
20	Cornell University	Ithaca	NY	1276
21	University of California - Irvine	Irvine	CA	1270
22	University of Michigan - Ann Arbor	Ann Arbor	MI	1162
23	University of Wisconsin - Madison	Madison	WI	1150
24	University of Illinois -Chicago	Chicago	IL	1111
25	University of North Carolina at Chapel Hill	Chapel Hill	NC	1110
26	Texas A&M University	College Station	TX	1107
27	Boston University	Boston	MA	1105
28	Emory University	Atlanta	GA	1103
29	University of Pittsburgh	Pittsburgh	PA	1056
30	University of Texas at Austin	Austin	TX	1050

* Date Source: Open Doors 2007: Report on International Educational Exchange

Published by Institute of International Education

OISS PROGRAMS: SUPPORTING YALE'S INTERNATIONAL STUDENT AND SCHOLAR COMMUNITY

"There's a party here everyday" remarked a woman upon walking by the International Center and seeing a large lively group assembled around the first floor conference table. Well, not quite a party a day, but hardly a day passes now without two or three events scheduled at the International Center for Yale Students and Scholars.

The opening of the International Center for Yale Students and Scholars in November 2005 has provided not only the physical space but also the excitement, energy and opportunity to expand support to Yale's international student and scholar community. In addition to the numerous programs sponsored by OISS, the Center is used by student groups and academic departments for lectures, receptions, meetings, seminars and conferences. The visiting scholar carrels on the second floor are continually occupied by visitors to the MacMillan Center and other academic units. The welcoming environment on the first floor, the endless pot of coffee and access to computer kiosks brings students and scholars into the center throughout the day and evening to study, check their email, print out a paper and occasionally take a quick nap.

In addition to the program offerings, OISS makes it a priority to be available to individual students and scholars. OISS staff offer walk-in advising, speaking with numbers of students and scholars each day about a wide range of issues: housing, personal and legal matters, present and future employment options, and of course, immigration regulations and maintaining legal status in the U.S. OISS continues to make available a software program to assist international students and scholars with filing their U.S. tax returns and provides assistance with other administrative matters such as acquiring U.S. social security numbers and CT driver's licenses.

The number and variety of programs offered by OISS has expanded as we continually assess the needs and interests of the very diverse international student and scholar population. Listed below are the program highlights of the 2006 and 2007 academic years.

- **Understanding America.** This series of dinner conversations with Yale faculty and friends aims to get below the surface of U.S. culture and society by tackling some of the tough issues facing the U.S. today. Topics have included: The American Dream, Journalism and the Free Press, Education in the U.S., Health Care Crisis, Guns and Violence, Political Participation and Race and Religion. These events, which are always at capacity, attract both U.S. and international students and scholars.
- **OISS English Conversation Groups.** Begun in 2000 as one weekly group, the OISS English Conversation Program has expanded to include seven groups each week. Facilitated by community volunteers and OISS staff, these groups offer an opportunity for informal English conversation practice, and attract over 100 international graduate students, scholars and dependents each week. Two additions for the summer of 2007 included a "Summer of Seinfeld" group (a discussion

of U.S. culture using clips from Seinfeld episodes) and an eight week group for international post docs.

- **Crossing Cultures.** These roundtable discussions feature a different guest moderator each week and address a variety of topics, including a survey of U.S. cultural values and norms, culture shock, U.S. holiday traditions, how to make small talk and “dangerous” English. The informal format of the program provides participants with a comfortable place to ask questions not only about the cultural differences and norms in the U.S. classroom, as well as matters related directly to surviving and thriving at Yale.
- **Taking Care of Business.** This series address some of the practical matters facing newly-arrived students and scholars. Topics include: living on a budget; identity theft; buying, owning and selling a car; and the ins and outs of renting an apartment.
- **International Center Cafe.** These weekly social gatherings are an informal opportunity to meet friends, new and old. Each event has a focus, ranging from performances and presentations by student groups (YASA’s Africa Week, performances by the Yale Bellydance Society, a YC jazz group, a Diwali Celebration hosted by SAGA, Lunar New year etc.) to evenings of karaoke or games.
- **Community Friends of Yale International Students.** In the summer of 2004, OISS initiated a host family program for Yale College freshmen. The program, which has now been expanded to include all international students, has matched nearly 100 students with volunteer hosts from the Yale and Greater New Haven community. Hosts and students keep in touch throughout the year and meet occasionally to share a meal or activity, planting the seeds of a potentially life-long friendship.
- **One on One Conversations.** A program that matches international students, scholars and their spouses or partners with volunteers from the New Haven and Yale community for language and culture exchange. Conversation partners begin with a four week commitment of one hour per week. More than 200 international scholars are currently participating in this program.
- **Thanksgiving Hosting.** OISS continues to match students and scholars with local hosts for Thanksgiving dinner.
- **International Spouses & Partners at Yale (ISPY).** Started by a group of spouses in Fall 2000, ISPY now has over 100 members on its roster. ISPY activities include: welcoming newly arrived spouses and partners, weekly evening craft circle, a daytime weekly knitting group, foreign language conversation groups (open to anyone -languages offered varies each year but have included French, Spanish and Italian), coffee hours, luncheons, book club, community kitchens (teach & learn different ethnic cuisines), and a summer hiking group.

- **Surviving a New England Winter and Coat Give Away.** The University Health Service, McDougal Center and OISS co-sponsor of this program, which provides “gently used” coats, as well as information about how to stay healthy during the cold and flu season to 100 or so international students and scholars, many of whom have never experienced winter.

 - **International Programming Fund.** This fund is used to support the activities of student and scholar cultural clubs at Yale. With a generous contribution of \$10,000 from the Office of the Secretary, these funds are providing full or partial support to more than 40 events each year.

 - **OISS Road Trips.** Several times each semester OISS organizes outings to nearby sites of interest, including New York City walking trips, trips to a Broadway show, Newport, West Point, Newport, Providence, Boston and the Big-E. In addition, OISS partners with the Connecticut Fulbright Alumni Association for trips to the IBM Research Labs, Thimble Islands and Hartford.

 - **Sports at the IC.** The 2006 soccer World Cup was the first opportunity for the International Center to organize an activity around an international sports event. Building on that success and responding to requests from the international community, OISS has also hosted broadcasts of the Cricket and Rugby World Cups (there were nearly 100 people at the Rugby World Cup championship match between England and South Africa) and the UEFA Champions League soccer matches. We are looking forward to bringing people in for our broadcasts of select Euro 2008 matches and highlights of the 2008 Summer Olympics in Beijing.

 - **Programs that Support Yale College International Students**
 - ◇ **Undergraduate Orientation - OIS (Orientation for International Students).** Run by Yale College international student counselors and offered as one of the five YC pre-orientation programs for freshmen, these three days of activities are designed to introduce new Yale College international students to Yale and New Haven and provide the opportunity to meet other new students. Each year over 80% of the international freshman participate in OIS.

 - ◇ **Fall and Spring Break Meals for YC Students.** Working with the YC International Student Organization (ISO), OISS provides dinners for international students who remain on campus during the fall and spring break periods.

 - ◇ **Winter Break Accommodations.** OISS arranges winter break accommodations for the 40 or so Yale College financially-aided international students who are not able to return home during the winter break.

 - **Orientation Programs**
 - ◇ **Orientation Program for Graduate and Professional International Students.** A month-long
-

series of events and activities, which complement the orientation activities of the graduate and professional schools, includes information sessions and social gatherings and culminates in the annual OISS/MacMillan Center reception for international students and scholars. Assisting with this set of programs and welcoming new graduate and professional students are three graduate students who serve as "orientation assistants." OISS also made presentations at the graduate school orientation and the orientation programs of most of the professional schools

- ◇ **Orientation for International Spouses & Partners at Yale (ISPY).** Begun as a two hour meeting with OISS staff in 2000, this fall orientation program is now an annual three-day event organized and run by the members of ISPY.
- ◇ **International Scholar Orientation.** For the third year, OISS and the Office of International Affairs are partnering to host monthly orientation programs and campus tours for newly arrived international scholars.
- ◇ **Airport Pickup.** For the first time, OISS organized three airport pickups at JFK for new international students arriving at the end of August 2007. One of the three dates coincided with the beginning of OIS (see above) and the other two with the move-in dates for graduate housing. About 100 new students participated.

- **Print or On-Line Resources**

- ◇ **OISS Web site.** A comprehensive Web site with a vast array of resources and links for international students and scholars as well as links for departments that host and hire international scholars, (www.oiss.yale.edu) A new addition to our on-line resources is the on-line site for the International Center, www.yale.edu/icenter
- ◇ **Handbook for International Students and Scholars.** This 150 page handbook was first written and compiled in July 2000 to assist with issues of settling in, social and cultural adjustment, culture shock, academic issues, health care, and more. The handbook is currently in its seventh edition and is available on line at <http://www.oiss.yale.edu/students/handbook.htm>
- ◇ **OISS-L Electronic Newsletter.** Begun in the fall of 1999, OISS Announcements are weekly e-mails containing important immigration updates, as well as information about events and activities taking place at the International Center and around campus. University administrators have been encouraged to join this e-mail list as a way of staying alert to the issues important to the international community.

Yale International E-Group. This interactive e-group of over 4000 members has voluntary enrollment and serves as an informal way to connect international graduate and professional students and visiting scholars across the lines drawn by schools, departments and lab walls.

What students and scholars have to say....

The motivation for the work we undertake at OISS comes from the many international students and scholars we come to know each year. In closing, we wish to share some of their comments to understand why this "work" is so gratifying for us.

I couldn't imagine how to deal with my visa problem without the help from OISS. OISS at Yale is very friendly and professional, and of great help! I do appreciate it! (PhD student from China)

New Haven and Yale were a great experience for me! Thanks to the International Center (especially the Conversation Groups and Playgroups) I met a lot of people from all over the world and made friendships... For that reason I never felt bored and depressed at home. In the playgroups we had a lot of fun! The mothers exchanged their experiences and we talked about child education and children sicknesses. I learned a lot from other mothers! It's very important to get out, join the programs and meet new people - this is the way how you can learn the culture and lifestyle of that country and will be a part of the big family! Yale is a great university! I have never seen a university like Yale before, which offers great programs, social events and lots more. You don't feel like a foreigner in New Haven, because you are accepted and they are trying everything to get you integrated into the community - you are not alone, you are in a big family!! (spouse of a Turkish scholar)

I would like to express my appreciation to OISS for organizing and providing venues so that football fans like me can get to watch the matches 'live,' not forgetting the snacks and drinks that were provided for us as well. I would not know how I would survive the hours in my lab if OISS did not organize this event. (Post doc from China)

The Center became a very important place during my stay in New Haven during the last four months of the year 2006. As a company to my husband, a Visiting Professor at Yale, I spent time at the Center improving my language skills, learning about Yale and more generally about education system in the United States. I also met new friends from various parts of the globe and learned about their culture and tradition. The Center contributes substantially to better understanding of people with different culture and religious backgrounds and thus teaches tolerance, acceptance and respect. My stay at the Center was professionally stimulating and socially very enjoyable. (spouse of Norwegian visiting faculty)

I wanted to thank you all for your support over the years. It is said in Ghana that it takes a village to raise a child. I have been no exception and during my time in the US/New Haven I have had my OISS family. (YC and YSM student)

Apart from the fact that the information you supplied is very helpful, it gives a sense of confidence that everything will be ok and that there is someone to count on. (Israeli Fulbright scholar)

Since my arrival at Yale, I have been extremely satisfied by the OISS at Yale for the warmth and hard work they have provided. (Music student from France)

First of all, let me thank you very much for all your messages and support during the last couple of months. The OISS makes us feel welcome before even arriving to New Haven! (LLM student from Greece)

Thank you SO MUCH for showing the Rugby World Cup games. It was wonderful to be able to see the games live, something that would have been impossible without the International Centre's organization. (Post doc from the UK)

Staff of the Office of International Students and Scholars

Ann Kuhlman, Director	Gang Wang, Associate Director
Susan Buydos, Assistant Director/Adviser	Elisabeth Kennedy, Assistant Director/Adviser
Janice Pinkard, Assistant Director/Adviser	Sarah Solarksi, Assistant Director/Adviser
Monica Weeks, Assistant Director/Adviser	Abigail Borchert, Program Coordinator
Warrena Wilkinson, Program Coordinator	Erin Gustafson, Building & Front Desk Coordinator
Sarah Henderson, Immigration Specialist	Margaret Valentino, Immigration Specialist
Jason Ignatius, ITS Support	Yusuf Samara, Woodbridge Fellow

Orientation Assistants, Summer 2007

Tamami Kawamura, Div, '08	Markus Labude, GS, '11	Ying Staton, GS, '08
---------------------------	------------------------	----------------------

Student Workers, 2007-2008

Ruth Botsio, BK '09	Wladimir Maracaba, JE '09	Perna Sekhri, TD '10
Eminet Feyissa, JE'10	Victor Mutai, '11	Batsirai Swiswa, CC '11
Ashley Guttierrez, SM, 10	Dambudzo Muzenda, MC ' 07	Thameka Thompson, SM '10
Eui Jin Kim, SY '08	Akua Opoku-Mensah, TD '09	Kaja Wilamanska, ES '08
Ivan Kozyryev, CC '10		

Office of International Students and Scholars
421 Temple Street
Yale University
New Haven, CT 06511
Tel. 203-432-2305 Fax: 203-432-7166
Email: oiss@yale.edu
www.oiss.yale.edu