

To Test or Run a Brio in Hyperion 9

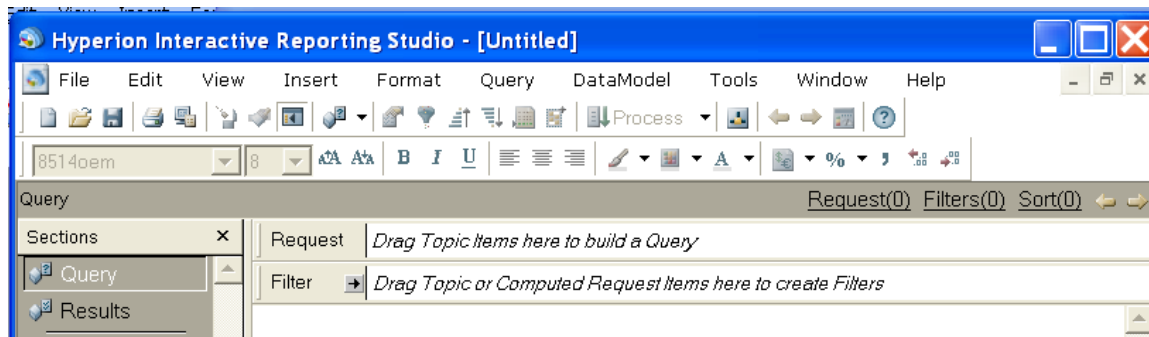
You can open/run a Hyperion 9 brio in one of two ways:

1. If a brio has been saved in Hyperion 9:
 - click on its icon and it will automatically open in version 9.
2. You can open a brio directly from within Hyperion 9, located in YAMS, under Student Administrative Applications, BrioQuery 9. *This is the method to use if you are converting one of your own brios.*

NOTE: For Hyperion 9 brios, the .oce files are now stored in your My Documents folder under Brio\Open Catalog Extensions. If you click on "Process" and Hyperion gives you a warning that it cannot find your .oce, click on "OK" and then navigate to My Documents\Brio\Open Catalog Extensions.

BrioQuery Comparison 6 vs 9

- Hyperion 9 looks almost identical to BrioQuery 6. Some icons are slightly different and some labels have been changed, e.g. "Limits" are now called "Filters."



- Functionality is very similar, though some differences are being discovered in more complex brios. Consult the FAQs from the ITS link below for more information.
- "Detail" reports are no longer supported. This is the #1 conversion concern.

Information about the conversion effort by Central ITS and FAQs are available from YAMS under Yale Developer Tools/Brio Query 9 Upgrade Information or via the link below:

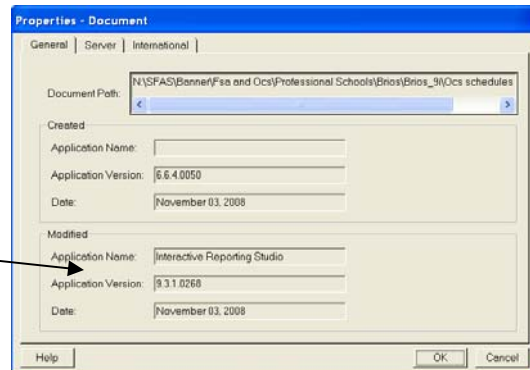
<http://www.yale.edu/its/software/brio/>

Steps to Upgrade to BrioQuery V9 (Hyperion 9)

Basic upgrade to a brio on your desktop:

1. Open BrioQuery 9 (currently under YAMS/Developer's Tools)
2. Go to the File Menu and choose "Open"
 - Browse to the query you would like to upgrade
 - Select the query and then click on "Open" from the dialog box
3. Go to the File Menu and choose "Save As"
 - Save the query to a new folder or add v9 to the end of the file name.

To check that a brio has been upgraded, go to the File Menu and Click on "Properties". If the brio has been converted successfully, you will see version 9 release data in the application version field:



NOTE: If you are upgrading brios for a department or you will be sharing these brios across multiple users, you should consider a few extra steps.

1. Banner tables are frequently modified during upgrades or normal development changes. Before saving the brio, go to the Query section and under the DataModel menu, click on Sync with Database. If there have been changes, the tables will be listed. You may have to do this multiple times until you receive the message "Datamodel hasn't been changed." Either Sync with Database in version 6, Save, then open in Version 9. Or Sync with database in Version 9 before saving.
2. If a brio has a Detail section, you must convert this section to a report in Version 6 and then delete the Detail section before saving in Version 6. Most Detail reports can be converted by doing the following: Highlight the Detail Section, click on the Detail menu, then click on "Convert to Section." The ITS brio site has more information on converting detail reports.
3. The default Save Option is to Save Results with the Query. If Results should be regenerated at each run, change this setting under the File Menu/Save Options by clicking on the query checkbox on/off:

Save Query Results With Document...
Compress Document
Password Protect Document...
Password Protect Design Mode...

