

1020 CHAPEL STREET

Floor Plans & Area Analysis

DRAWING TITLE:

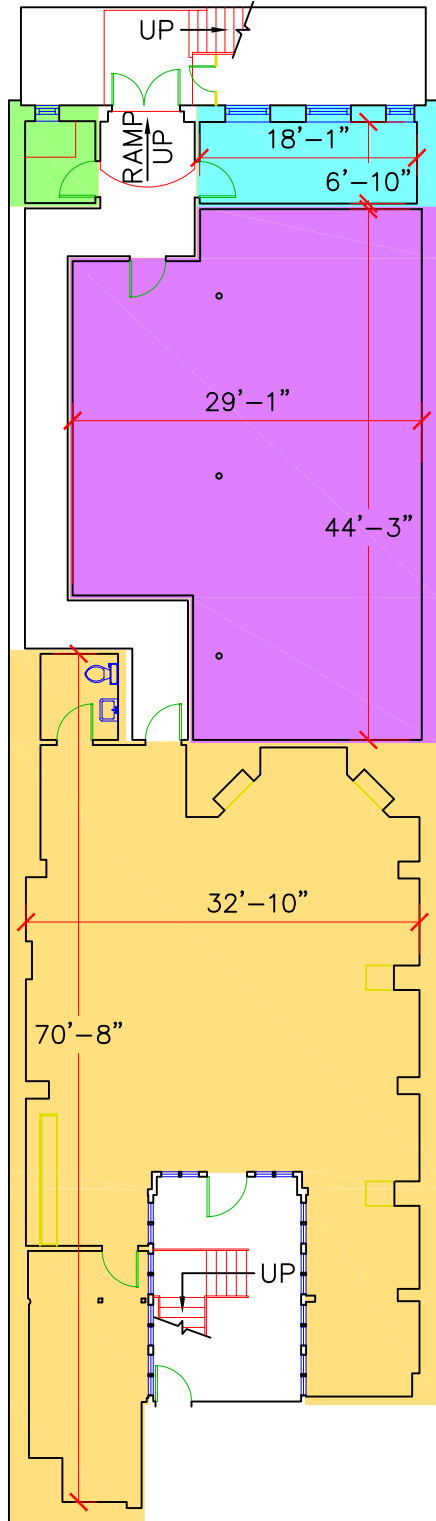
1020 CHAPEL STREET
Floor Plans & Area Analysis

INFOQUEST
TECHNOLOGIES
945-B Cromwell Avenue, Suite 310
Rocky Hill, Connecticut 06067
Telephone: 860-563-2600 Telefax: 860-563-2605
Internet: <http://www.iqt.com>

YALE UNIVERSITY PROPERTIES
433 Temple Street
New Haven, CT 06511

DATE: 03.05.08
SCALE: NTS
DRAWING #:

A-0



1020 CHAPEL STREET

LOWER LEVEL BOMA ANALYSIS

Tenant Area =	1,902 SF
Storage Area 1 =	1,202 SF
Storage Area 2 =	169 SF
Storage Area 3 =	62 SF

STATEMENT OF COMPLIANCE

This plan complies with the 2004 BOMA Industrial Building Standard - Methodology A, for the measurement of BOMA Tenant Area and may be the basis for future calculations of BOMA Rentable Areas in this building.



DRAWING TITLE:

1020 CHAPEL STREET
Floor Plans & Area Analysis

INFOQUEST
TECHNOLOGIES
945-B Cromwell Avenue, Suite 310
Rocky Hill, Connecticut 06067
Telephone: 860-563-2600 Telefax: 860-563-2605
Internet: <http://www.iqr.com>

YALE UNIVERSITY PROPERTIES
433 Temple Street
New Haven, CT 06511

DATE: 03.05.08
SCALE: 1/16" = 1'-0"
DRAWING #:

A-1