

# 1044 CHAPEL STREET UNIT 3

## Floor Plans & Area Analysis

DRAWING TITLE:

1044 CHAPEL STREET, UNIT 3  
Floor Plans & Area Analysis

**INFOQUEST**  
TECHNOLOGIES  
945-B Cromwell Avenue, Suite 310  
Rocky Hill, Connecticut 06067  
Telephone: 860-563-2600 Telefax: 860-563-2605  
Internet: <http://www.iqt.com>

YALE UNIVERSITY PROPERTIES  
433 Temple Street  
New Haven, CT 06511

DATE: 02.15.07  
SCALE: NTS  
DRAWING #:

A-0

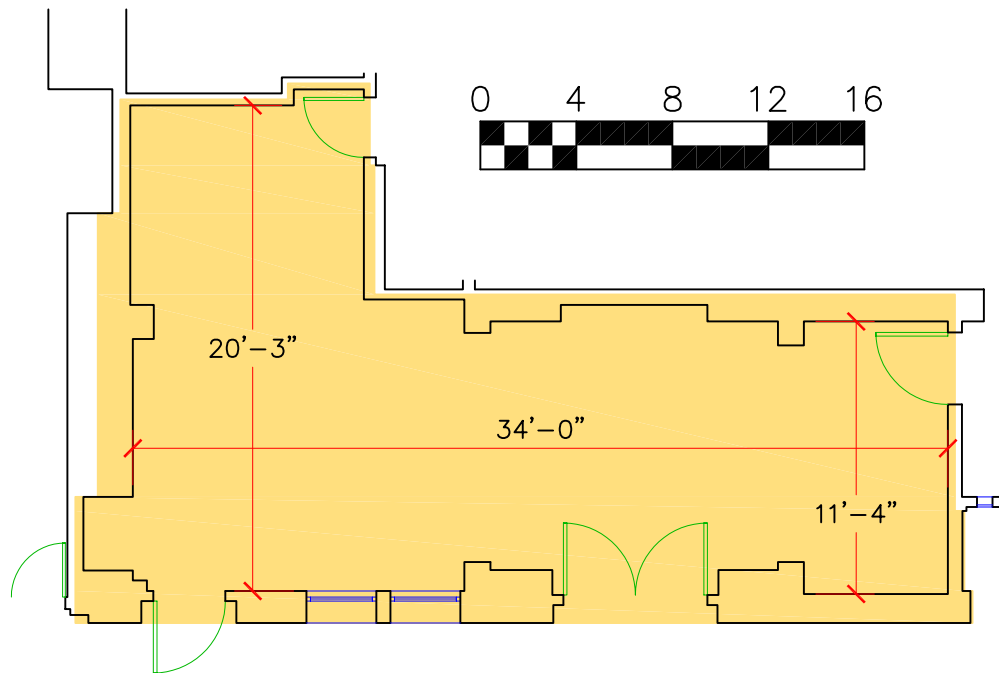
**1044 CHAPEL STREET  
UNIT 3**

**FIRST FLOOR  
BOMA ANALYSIS**

**BOMA Tenant Area = 587 SF**

STATEMENT OF COMPLIANCE

This plan complies with the 2004 BOMA  
Industrial Building Standard -  
Methodology A, for the measurement of  
BOMA Tenant Area and may be the basis  
for future calculations of BOMA  
Rentable Areas in this building.



DRAWING TITLE:  
1044 CHAPEL STREET, UNIT 3  
First Floor Plan & Area Analysis

**INFOQUEST**  
TECHNOLOGIES  
945-B Cromwell Avenue, Suite 310  
Rocky Hill, Connecticut 06067  
Telephone: 860-563-2600 Telefax: 860-563-2605  
Internet: <http://www.iqr.com>

YALE UNIVERSITY PROPERTIES  
433 Temple Street  
New Haven, CT 06511

DATE: 02.15.07  
SCALE: 1/8" = 1'-0"  
DRAWING #:  
**A-1**