

286 YORK STREET

Floor Plans & Area Analysis

DRAWING TITLE:

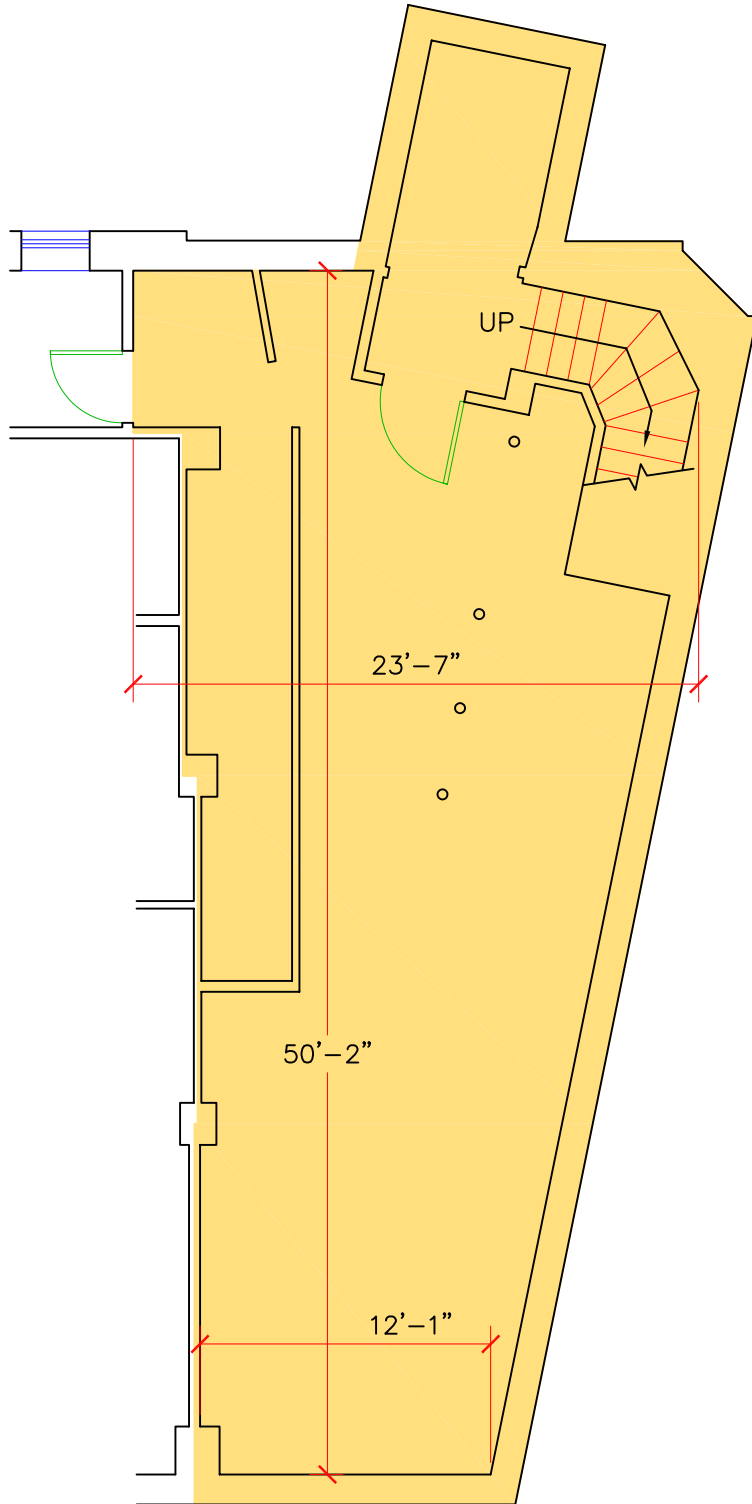
286 YORK STREET
Floor Plans & Area Analysis

INFOQUEST
TECHNOLOGIES
945-B Cromwell Avenue, Suite 310
Rocky Hill, Connecticut 06067
Telephone: 860-563-2600 Telefax: 860-563-2605
Internet: <http://www.iqt.com>

YALE UNIVERSITY PROPERTIES
433 Temple Street
New Haven, CT 06511

DATE: 02.15.07
SCALE: NTS
DRAWING #:

A-0



286 YORK STREET

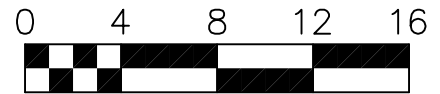
BASEMENT

BOMA ANALYSIS

BOMA Tenant Area = 1,069 SF

STATEMENT OF COMPLIANCE

This plan complies with the 2004 BOMA
Industrial Building Standard -
Methodology A, for the measurement of
BOMA Tenant Area and may be the basis
for future calculations of BOMA
Rentable Areas in this building.

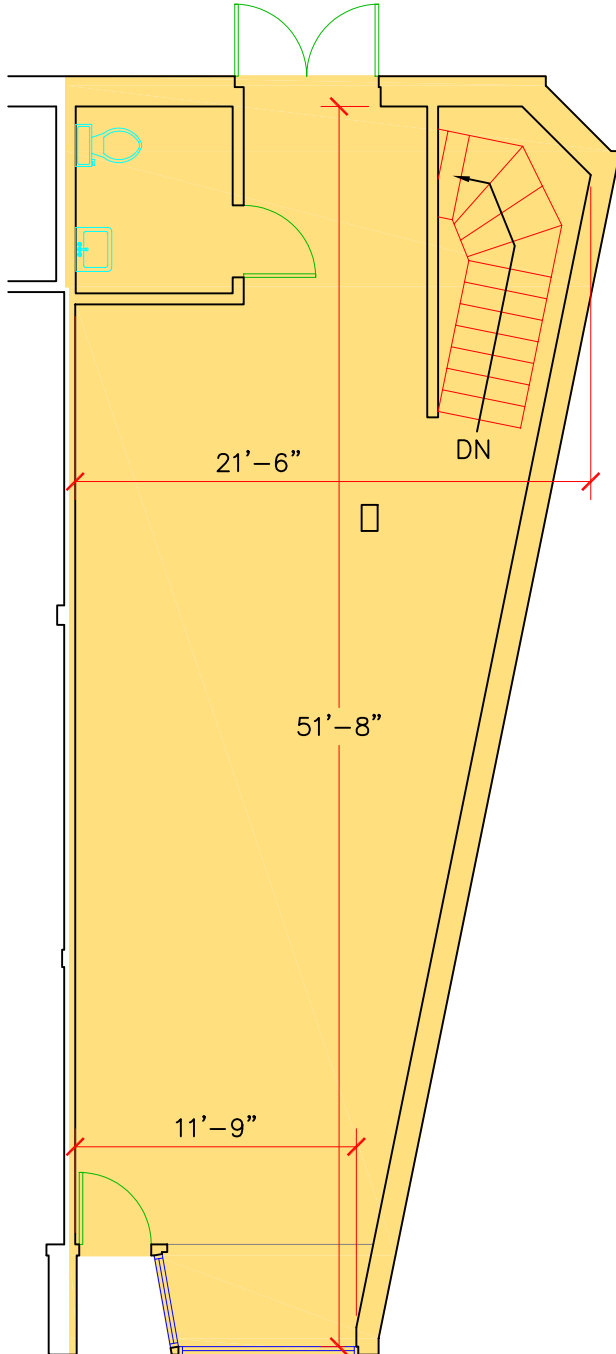


DRAWING TITLE:
286 YORK STREET
Basement Plan & Area Analysis

INFOQUEST
TECHNOLOGIES
945-B Cromwell Avenue, Suite 310
Rocky Hill, Connecticut 06067
Telephone: 860-563-2600 Telefax: 860-563-2605
Internet: <http://www.iqt.com>

YALE UNIVERSITY PROPERTIES
433 Temple Street
New Haven, CT 06511

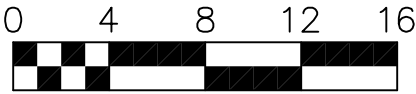
DATE: 02.15.07
SCALE: 1/8" = 1'-0"
DRAWING #:
A-1



286 YORK STREET
FIRST FLOOR
BOMA ANALYSIS
BOMA Tenant Area = 946 SF

STATEMENT OF COMPLIANCE

This plan complies with the 2004 BOMA
 Industrial Building Standard -
 Methodology A, for the measurement of
 BOMA Tenant Area and may be the basis
 for future calculations of BOMA
 Rentable Areas in this building.



DRAWING TITLE:
286 YORK STREET
First Floor Plan & Area Analysis

INFOQUEST
 TECHNOLOGIES
 945-B Cromwell Avenue, Suite 310
 Rocky Hill, Connecticut 06067
 Telephone: 860-563-2600 Telefax: 860-563-2605
 Internet: <http://www.iqt.com>

YALE UNIVERSITY PROPERTIES
 433 Temple Street
 New Haven, CT 06511

DATE: 02.15.07
 SCALE: 1/8" = 1'-0"
 DRAWING #:
A-2