

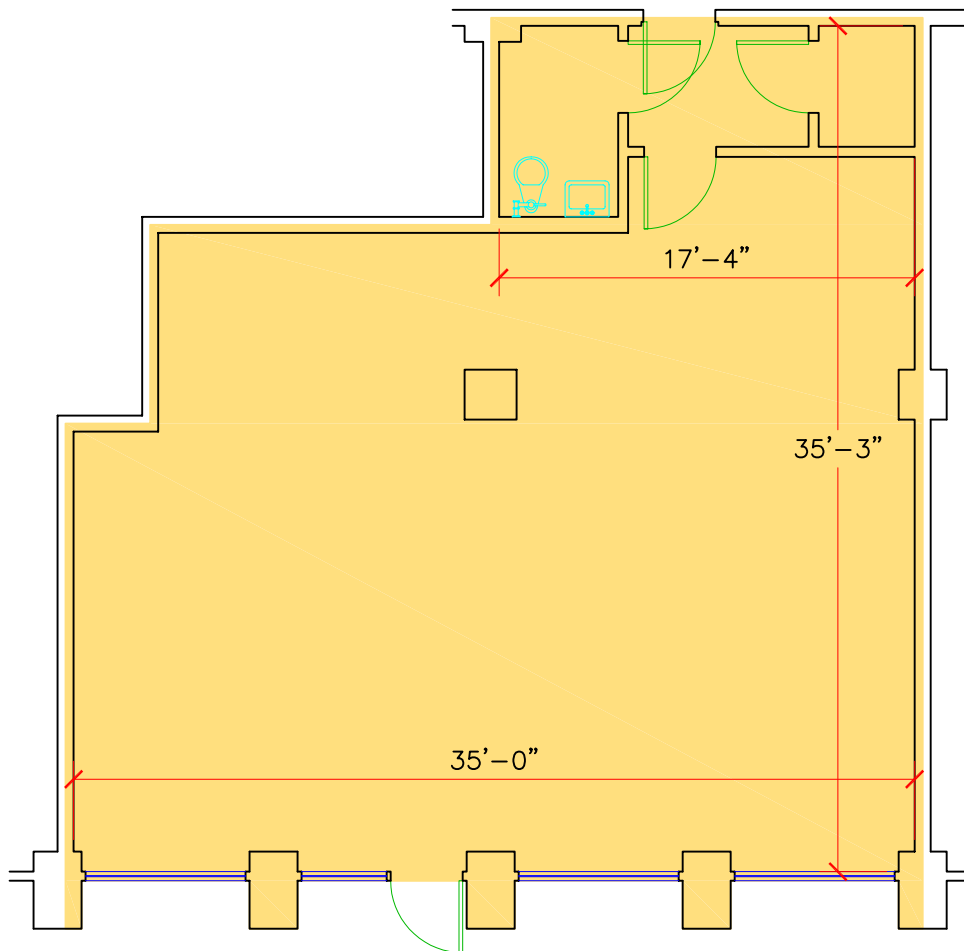
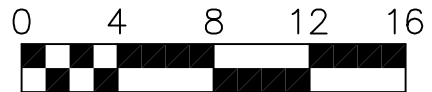
# 87 AUDUBON COURT

## FIRST FLOOR BOMA ANALYSIS

BOMA Tenant Area = 1,117 SF

### STATEMENT OF COMPLIANCE

This plan complies with the 2004 BOMA Industrial Building Standard - Methodology A, for the measurement of BOMA Tenant Area and may be the basis for future calculations of BOMA Rentable Areas in this building.



DRAWING TITLE:

87 AUDUBON COURT  
First Floor Plan & Area Analysis

**INFOQUEST**  
TECHNOLOGIES  
945-B Cromwell Avenue, Suite 310  
Rocky Hill, Connecticut 06067  
Telephone: 860-563-2600 Telefax: 860-563-2605  
Internet: <http://www.iqr.com>

YALE UNIVERSITY PROPERTIES  
433 Temple Street  
New Haven, CT 06511

DATE: 02.28.07  
SCALE: 1/8" = 1'-0"  
DRAWING #:

A-1