

# 83 AUDUBON STREET

## Floor Plans & Area Analysis

DRAWING TITLE:

83 AUDUBON STREET  
Floor Plans & Area Analysis

**INFOQUEST**

TECHNOLOGIES

1077 Silas Deane Highway, Suite 321  
Wethersfield, Connecticut 06109  
Telephone: 860-563-2600 Telefax: 860-563-2605  
Internet: <http://www.iqt.com>

YALE PROPERTIES  
433 Temple Street  
New Haven, CT 06511

DATE: 05.06.09

SCALE: NTS

DRAWING #:

A-0

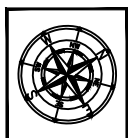
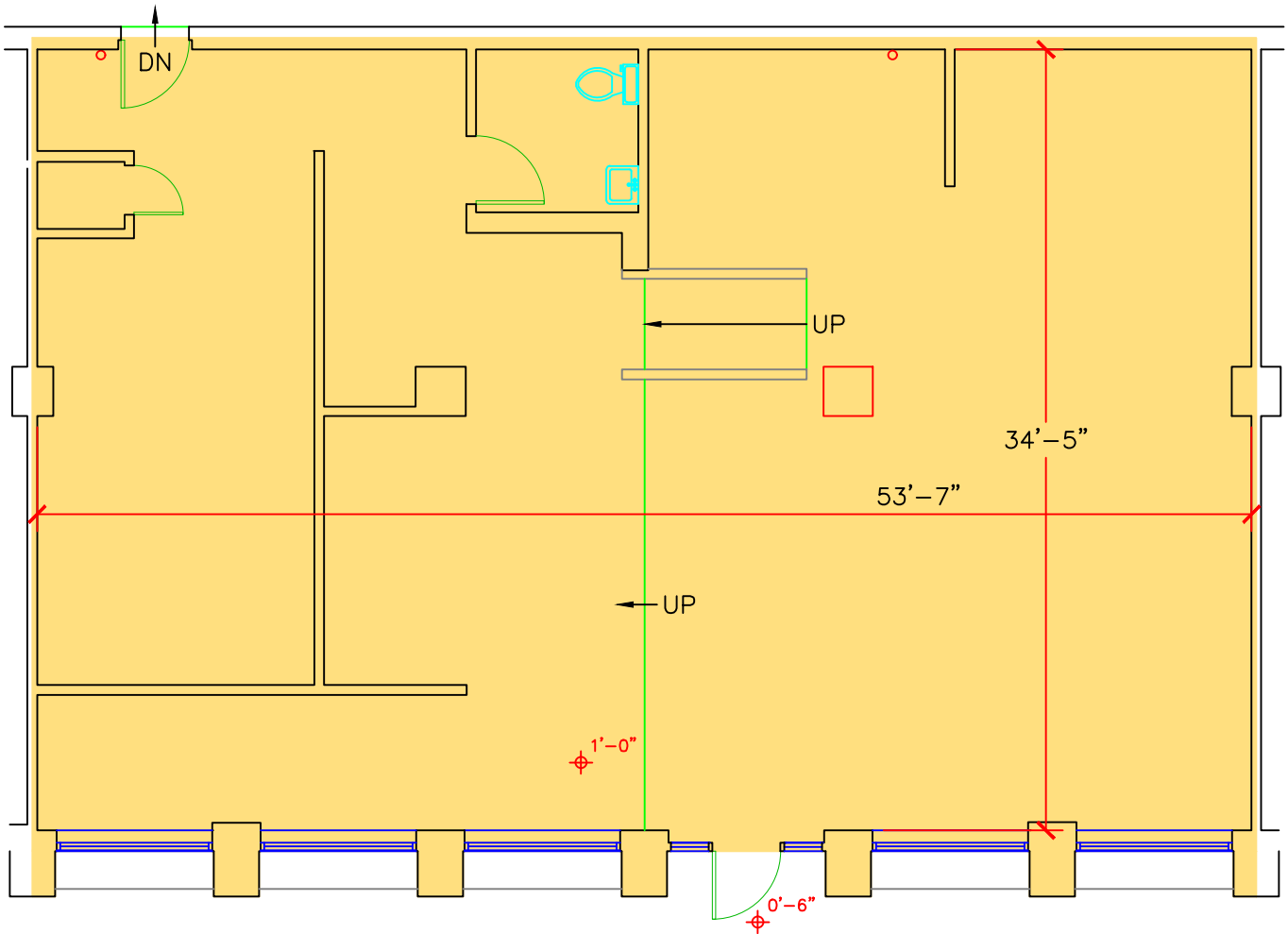
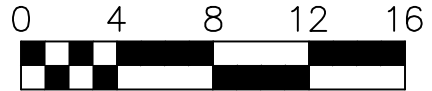
# 83 AUDUBON STREET

## FIRST FLOOR BOMA ANALYSIS

BOMA Tenant Area = 1,961 SF

### STATEMENT OF COMPLIANCE

This plan complies with the 2004 BOMA Industrial Building Standard - Methodology A, for the measurement of BOMA Tenant Area and may be the basis for future calculations of BOMA Rentable Areas in this building.



DRAWING TITLE:  
83 AUDUBON STREET  
First Floor Plan & Area Analysis

**INFOQUEST**  
TECHNOLOGIES  
1077 Silas Deane Highway, Suite 321  
Wethersfield, Connecticut 06109  
Telephone: 860-563-2600 Telefax: 860-563-2605  
Internet: <http://www.iqt.com>

YALE PROPERTIES  
433 Temple Street  
New Haven, CT 06511

DATE: 05.06.09  
SCALE: 1/8" = 1'-0"  
DRAWING #:  
**A-1**