

87 AUDUBON COURT

Floor Plans & Area Analysis

DRAWING TITLE:

87 AUDUBON COURT
Floor Plans & Area Analysis

INFOQUEST
TECHNOLOGIES
945-B Cromwell Avenue, Suite 310
Rocky Hill, Connecticut 06067
Telephone: 860-563-2600 Telefax: 860-563-2605
Internet: <http://www.iqt.com>

YALE UNIVERSITY PROPERTIES
433 Temple Street
New Haven, CT 06511

DATE: 02.28.07
SCALE: NTS
DRAWING #:

A-0

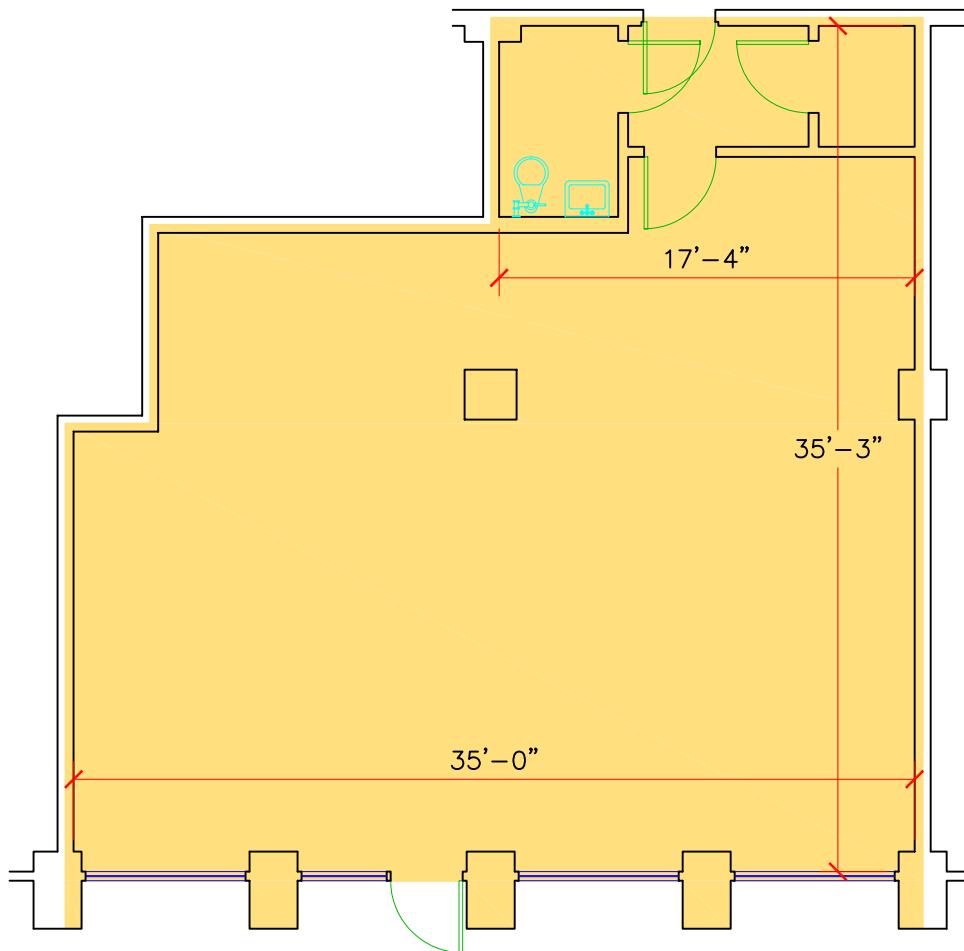
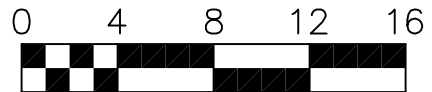
87 AUDUBON COURT

FIRST FLOOR BOMA ANALYSIS

BOMA Tenant Area = 1,117 SF

STATEMENT OF COMPLIANCE

This plan complies with the 2004 BOMA Industrial Building Standard - Methodology A, for the measurement of BOMA Tenant Area and may be the basis for future calculations of BOMA Rentable Areas in this building.



DRAWING TITLE:

87 AUDUBON COURT
First Floor Plan & Area Analysis

INFOQUEST
TECHNOLOGIES
945-B Cromwell Avenue, Suite 310
Rocky Hill, Connecticut 06067
Telephone: 860-563-2600 Telefax: 860-563-2605
Internet: <http://www.iqr.com>

YALE UNIVERSITY PROPERTIES
433 Temple Street
New Haven, CT 06511

DATE: 02.28.07
SCALE: 1/8" = 1'-0"
DRAWING #:

A-1