

220 COLLEGE STREET AREA - B

Floor Plans & Area Analysis

DRAWING TITLE:
220 COLLEGE STREET
AREA - B
Floor Plans & Area Analysis

INFOQUEST
TECHNOLOGIES
945-B Cromwell Avenue, Suite 310
Rocky Hill, Connecticut 06067
Telephone: 860-563-2600 Telefax: 860-563-2605
Internet: <http://www.iqt.com>

YALE UNIVERSITY PROPERTIES
433 Temple Street
New Haven, CT 06511

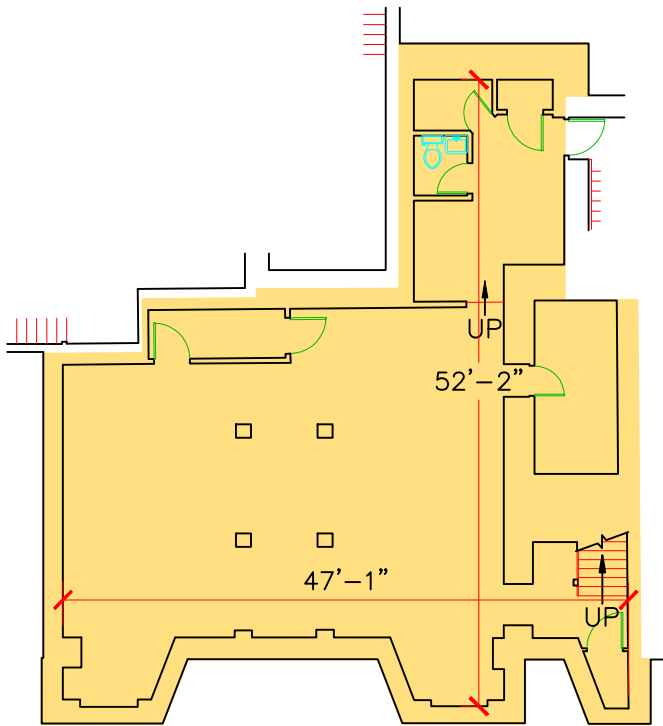
DATE: 06/05/98
SCALE: N/A
DRAWING #:

A-0

**220 COLLEGE STREET
AREA - B**

**BASEMENT
BOMA ANALYSIS**

BOMA Tenant Area = 1,913 SF



STATEMENT OF COMPLIANCE

This plan complies with the 2004 BOMA
Industrial Building Standard -
Methodology A, for the measurement of
BOMA Tenant Area and may be the basis
for future calculations of BOMA
Rentable Areas in this building.



DRAWING TITLE:
**220 COLLEGE STREET
AREA - B**
Basement Plan & Area Analysis

INFOQUEST
TECHNOLOGIES
945-B Cromwell Avenue, Suite 310
Rocky Hill, Connecticut 06067
Telephone: 860-563-2600 Telefax: 860-563-2605
Internet: <http://www.iqt.com>

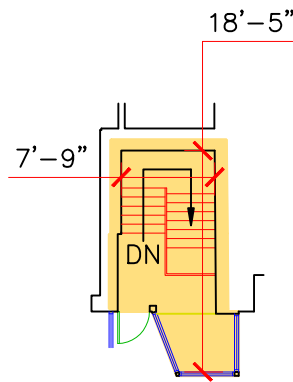
YALE UNIVERSITY PROPERTIES
433 Temple Street
New Haven, CT 06511

DATE: 06/08
SCALE: 1/8" = 1'-0"
DRAWING:
A-1

**220 COLLEGE STREET
AREA - B**

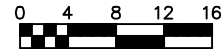
**FIRST FLOOR
BOMA ANALYSIS**

BOMA Tenant Area = 173 SF



STATEMENT OF COMPLIANCE

This plan complies with the 2004 BOMA Industrial Building Standard - Methodology A, for the measurement of BOMA Tenant Area and may be the basis for future calculations of BOMA Rentable Areas in this building.



DRAWING TITLE:
220 COLLEGE STREET
AREA - B
First Floor Plan & Area Analysis

INFOQUEST
TECHNOLOGIES
945-B Cromwell Avenue, Suite 310
Rocky Hill, Connecticut 06067
Telephone:860-563-2600 Telefax:860-563-2605
Internet: <http://www.iqt.com>

YALE UNIVERSITY PROPERTIES
433 Temple Street
New Haven, CT 06511

DATE: 06/08
SCALE: 1/8" = 1'-0"
DRAWING:

A-2