

260 COLLEGE STREET

Floor Plans & Area Analysis

DRAWING TITLE:

260 COLLEGE STREET
Floor Plans & Area Analysis

INFOQUEST
TECHNOLOGIES
945-B Cromwell Avenue, Suite 310
Rocky Hill, Connecticut 06067
Telephone: 860-563-2600 Telefax: 860-563-2605
Internet: <http://www.iqt.com>

YALE UNIVERSITY PROPERTIES
433 Temple Street
New Haven, CT 06511

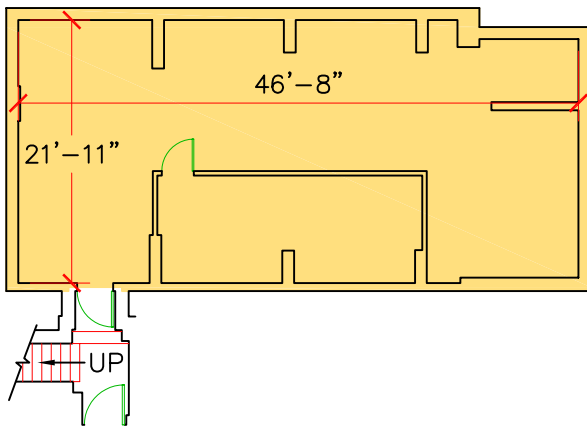
DATE: 05.16.07
SCALE: NTS
DRAWING #:

A-0

260 COLLEGE STREET

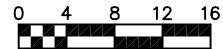
BASEMENT BOMA ANALYSIS

BOMA Tenant Area = 1,132 SF



STATEMENT OF COMPLIANCE

This plan complies with the 2004 BOMA Industrial Building Standard - Methodology A, for the measurement of BOMA Tenant Area and may be the basis for future calculations of BOMA Rentable Areas in this building.



DRAWING TITLE:

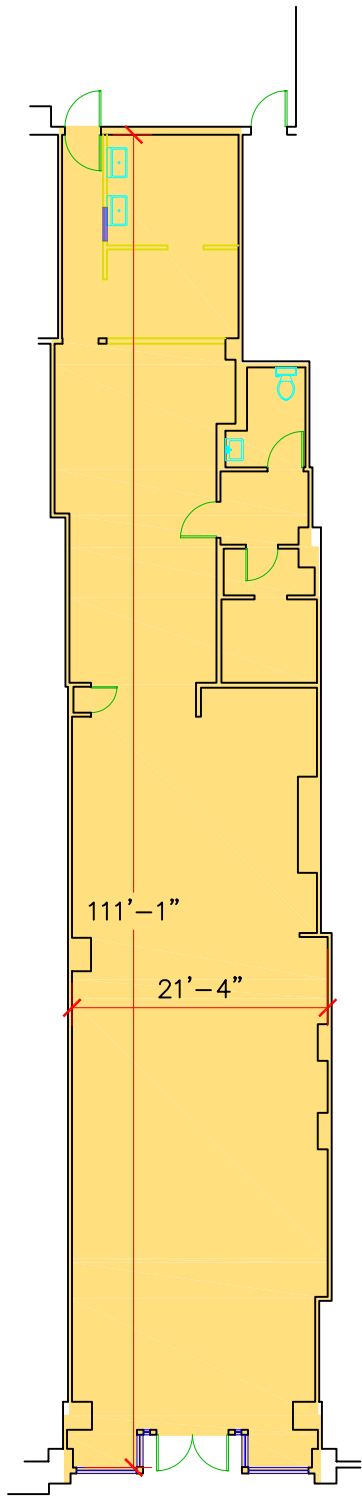
260 COLLEGE STREET
Basement Plan & Area Analysis

INFOQUEST
TECHNOLOGIES
945-B Cromwell Avenue, Suite 310
Rocky Hill, Connecticut 06067
Telephone: 860-563-2600 Telefax: 860-563-2605
Internet: <http://www.iqt.com>

YALE UNIVERSITY PROPERTIES
433 Temple Street
New Haven, CT 06511

DATE: 05.16.07
SCALE: 1/16" = 1'-0"
DRAWING #:

A-1



COLLEGE STREET

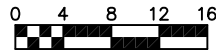
260 COLLEGE STREET

FIRST FLOOR BOMA ANALYSIS

BOMA Tenant Area = 2,227 SF

STATEMENT OF COMPLIANCE

This plan complies with the 2004 BOMA Industrial Building Standard - Methodology A, for the measurement of BOMA Tenant Area and may be the basis for future calculations of BOMA Rentable Areas in this building.



DRAWING TITLE:

260 COLLEGE STREET
First Floor Plan & Area Analysis

INFOQUEST
TECHNOLOGIES
945-B Cromwell Avenue, Suite 310
Rocky Hill, Connecticut 06067
Telephone: 860-563-2600 Telefax: 860-563-2605
Internet: <http://www.iqr.com>

YALE UNIVERSITY PROPERTIES
433 Temple Street
New Haven, CT 06511

DATE: 05.16.07
SCALE: 1/16" = 1'-0"
DRAWING #:

A-2