



2011 Yale World Fellows Program

YALE COLLEGE STUDENT LIAISONS



Varoon Bashyakarla (MC'13)

Email: varoon.bashyakarla@yale.edu

World Fellow: Martina Gmür

Hometown: Wichita, Kansas

Major: Economics

Activities & Organizations: Colleges Against Cancer, Relay For Life, Yale Journal of Medicine and Law, Asian American Cultural Center (Peer Liaison), Yale Men's Club Tennis

Interests: Social entrepreneurship, development and poverty economics, climate change and environmental sustainability, global health, gender mobility and equality, traveling, reading, tennis, music, and NCAA Basketball.

Favorite Place to Eat: BAR



Abe Bekele (DC '13)

Email: abe-melek.bekele@yale.edu

World Fellow: Carl Mossfeldt

Hometown: New Orleans, Louisiana

Major: Economics

Activities & Organizations: Black Men's Union (treasurer), Yale Jazz Ensemble, Intramural Supervisor, Davenport Pops Orchestra, Davenport Buttery

Interests: traveling, global health, trumpet, music (jazz)

Favorite Place to Eat: Sally's, Alpha Delta



Rae Ellen Bichell (DC '12)

Email: raeellen.bichell@yale.edu

World Fellow: Carl Mossfeldt

Hometown: Nashville, Tennessee

Major: Anthropology

Activities and Organizations: The Yale Globalist, Yale Outdoors, FOOT, intramurals

Interests: traveling, Master's Teas, drawing

Favorite places to eat: Lalibela



Andrew Calder (BK '13)

Email: andrew.calder@yale.edu

World Fellow: Siobhan Cleary

Hometown: Toronto, Ontario

Majors: Economics and Global Affairs

Activities and Organizations: Yale Climbing Team, Yale New Journal, Yale Herald, Berkeley College Council, Fence Club, BK Master's Aide

Interests: Going outside with my friends and climbing rocks, staying inside and listening to music, learning math, writing, and never having a dull moment.

Favorite Place to Eat: Basil Restaurant, Berkeley dining hall



Luke Connell (SM '13)

Email: luke.connell@yale.edu

World Fellow: Monika Halan

Hometown: Cairo, Georgia

Majors: Religious Studies and Political Science

Activities and Organizations: Yale Refugee Project, Genocide Action Project, A.C.T. for Congo Campaign

Interests: coffee, Hilary Clinton, literature, tiramisu, film, Oprah

Favorite Place to Eat: Blue State



Nora Caplan-Bricker (BK '12)

Email: nora.caplan-bricker@yale.edu

World Fellow: Habib Rahman

Hometown: Northampton, Massachusetts

Major: Humanities

Activities: The Yale Daily News, FOOT, Peace by Peace

Interests: Books, chocolate, exploring new cities

Favorite Place to Eat: Skappo or Caseus



Hector Ivan Correa (SM '13)

Email: hector.correa@yale.edu

World Fellow: Gavin Sheppard

Hometown: Azusa, CA

Major: Mathematics and Philosophy

Activities & Organization: MEChA (Movimiento Estudiantil Chicano de Aztlan), MAS Familias (Math and Science Cultural Group)

Interests: Eating, watching independent movies, going on adventures, dancing

Favorite Place to Eat: Ay Salsa!



Karen Cuenca (CC '13)

E-mail: karen.cuenca@yale.edu

World Fellow: Adrien Couton

Hometown: Chicago

Major: Political Science

Activities & Organization: Roosevelt Institute, Ready Set Launch, Urban Fellows, MEChA, New Haven Reads

Interests: Catching up on world news in different languages, hanging out in gothic libraries, reading until my eyes hurt, taking candid pictures

Favorite Place to Eat: Miya's Sushi, BAR Pizza



Marissa Dearing (BK '14)

Email: marissa.dearing@yale.edu

World Fellow: Habib Rahman

Hometown: Potomac, Maryland

Major: Undecided (Humanities/Ethics, Politics & Economics)

Activities & Organizations: Arab Students Association, The Globalist, Roosevelt Institute

Interests: Arabic, documentaries, NPR

Favorite Place to Eat: Barcelona



Ana T. del Toro (PC '13)

Email: ana.deltoro@yale.edu

World Fellow: Chrishan Thuraisingham

Hometown: Monterrey, Mexico

Major: Economics and Political Science

Activities and Organizations: Bridges ESL (Co-coordinator), the Holocaust Memorial Archive project, Ballet Folklórico Mexicano de Yale dance group, Spanish Department, Yale International Relations Association.

Interests: Cooking and good food, Latin American history, yoga, education reform.

Favorite Place to Eat: Prime 16



Caroline Dewing (SC '12)

Email: caroline.dewing@yale.edu

World Fellow: Gavin Sheppard

Hometown: Mountain Lakes, NJ

Major: Molecular, Cellular & Developmental Biology

Activities and Organizations: Engineers Without Borders, Saint Thomas More Undergraduate Council, Silliman Activities & Administrative Committee, Tutoring

Interests: Traveling, puzzles, outdoor adventures, drawing, creative projects, collecting postcards

Favorite Place to Eat: Ashley's! (I cannot live without ice cream.)



Serif Disi (TD '14)

Email: sherif.disi@yale.edu

World Fellow: Ibrahim Suffian

Hometown: Ramallah, Palestine

Major: Economics and Mathematics

Activities & Organizations: International Students Organization, Arab Students Association, Yale Refugee Project

Interests: Soccer, Middle Eastern Politics, Financial Markets, Music

Favorite Place to Eat: A1 on Broadway!



Name: Jacob Effron (SM' 13)

Email: jacob.effron@yale.edu

World Fellow: Monika Halan

Hometown: Brookline, MA

Major: Ethics, Politics and Economics

Activities and Organizations: ReadySetLaunch, The Politic, Yale Debate Association, FOOT, Tour Guide

Interests: Healthcare policy, Boston sports teams, education and food

Favorite Places to Eat: Barcelona, Thai Taste



Nicole (Nikki) Endsley (MC'13)

Email: nicole.endsley@yale.edu

World Fellow: Martina Gmür

Hometown: San Antonio, TX

Major: Anthropology and Religious Studies

Activities & Organizations: tutor at IRIS (Integrated Refugee and Immigrant Services), assistant at Yale Council on Middle East Studies, Graphics Department Researcher and Tour Guide at the Yale Peabody Museum, St. Thomas More Catholic Liaison for Morse College and Eucharistic Minister, VISA (Vietnamese Student's Association) member, Theater (Dramat and Sudler funded plays), Note-taker for the Yale Office on Disabilities, FOCUS (pre-orientation program for sophomores, Yale Habitat for Humanit, Danceworks

Interests: Traveling, literature, art (I love to paint and draw), poetry, theater, interfaith relations, human rights, French culture and language, the Middle East, refugee and immigrant policy

Favorite Place to Eat: Soul de Cuba, Basil, Istanbul Café, everywhere/anywhere with excellent food



Andrew Goldstein (JE '13)

Email: andrew.goldstein@yale.edu

World Fellow: Negusu Aklilu

Hometown: Portland, Oregon

Major: Applied Physics

Activities and Organizations: Yale Energy Club, Yale Tour Guide, JE Philharmonic, Intramurals

Sports, Yale Scientific Magazine, MathCounts Tutor

Interests: Hiking/Running, Clarinet, Pick-up Basketball Games, Rubik's Cubes

Favorite Place to Eat: Bangkok Gardens, Thai Taste



Ramon Gonzalez (BR '12)

Email: ramon.gonzalez@yale.edu

World Fellow: Fabio Scano

Hometown: New York, New York

Major: Ethics, Politics & Economics

Activities and Organizations: YaleGlobal, Yale Review of International Studies, Club Tennis

Interests: The NY Giants, Bill Simmons, international political economy, foreign journalism, Catholic novelists

Favorite Place to Eat: Sitar, Ibiza



Yahia M.H.A. Hassan (BK '14)

Email: yahia.hassan@yale.edu

World Fellow: Siobhan Cleary

Hometown: Khartoum, Sudan

Major: Economics

Activities & Organizations: Yale Undergraduate African Political Forum (Cofounding President), Berkeley College Council (Treasurer), Arab Students' Association at Yale (Political Chair), Berkeley Housing Committee (Class Representative)

Interests: International News, Financial Markets, Education, Sustainable Development & Alternative Energy Sources, Public Policy, Soccer, Cinema

Favorite Place to Eat: Alpha Delta (Wenzel)!



Claire Henly (CC '12)

Email: claire.henly@yale.edu

World Fellow: Adrien Couton

Hometown: Melbourne, Australia

Major: Environmental Engineering

Activities & Organizations: Women's Ultimate Frisbee Team, FOOT (Freshman Outdoor Orientation Trips), Yale Undergraduate Energy Club, YCEI (Yale Climate and Energy Institute) Student Congress, Read the Disc Volunteer Program

Interests: the outdoors, energy and environmental issues, cooking, good food, music, traveling, junk stores

Favorite Place to Eat: La Carreta, Thai Taste, Prime 16



David Kastelman (PC '13)

Email: david.kastelman@yale.edu

World Fellow: Chrishan Thuraisingham

Hometown: San Jose, CA

Majors: Economics and Cognitive Science

Activities and Organizations: Social Investment Team, Global Development Alliance, Teeth Slam Poets, Club Baseball

Interests: Comedy, Learning, Helping. And California slang.

Favorite Places to Eat: Zaroka, Miya's, Moe's Southwest Grill



Anna Kellar (SY' 12)

Email: anna.kellar@yale.edu

World Fellow: Sonali Kochhar

Hometown: Falmouth, Maine

Major: Political Science

Activities and Organizations: Yale Afghanistan Forum, The Yale Globalist, Club Nordic Skiing, Lo Stivale (Italian Club)

Interests: traveling, politics, Central Asia, British TV, art

Favorite Place to Eat: Thali Too or BAR pizza



Ariella Kristal (TD '14)

Email: ariella.kristal@yale.edu

World Fellow: Orit Marom-Albeck

Hometown: Roslyn, NY

Major: Undecided

Activities and Organizations: Yale Hillel, Timothy Dwight's Mott Woolley Council, Squash Haven, Volunteer Income Tax Assistance

Interests: volunteering, international development, traveling

Favorite Place to Eat: Basta



Maxwell Kushner-Lenhoff (ES '12)

Email: maxwell.kushner-lenhoff@yale.edu

World Fellow: Marcelo Furtado

Hometown: Long Beach, CA

Major: Chemistry (BS/MS)

Activities & Organizations: Chemistry Club, Yale Student Environmental Coalition (YSEC), Yale Student Roundtable (YSR), Theater, Chemistry Research, Yale Club Swim Team

Interests: Environmental Activism, International Politics, Chemistry, Law, Judaism, Theater.

Favorite Place to Eat: Tandoor Clay Oven



Allison Lazarus (JE '14)

Email: allison.lazarus@yale.edu

World Fellow: Sati Rasuanto

Hometown: Cincinnati, Ohio

Majors: Political Science or Global Affairs

Activities & Organizations: Policy Assistant to New Haven Board of Aldermen, Roosevelt, Prison tutoring

Interests: Tennis, reading, French, international relations

Favorite Place to Eat: Mamoun's!



Zeenat Mansoor (JE'13)

Email: zeenat.mansoor@yale.edu

World Fellow: Sati Rasuanto

Hometown: Lahore, Pakistan

Majors: Mechanical Engineering and Film Studies

Activities and Organizations: Yale Daily News, Yale Outdoors, Intramural badminton

Interests: Photography, painting, yoga, biking up East Rock.

Favorite Places to Eat: Starbucks, Yorkside Pizza



Emily Massey (JE '14)

Email: emily.massey@yale.edu

World Fellow: Negusu Aklilu

Hometown: Bethesda, MD

Major: Philosophy

Activities & Organizations: Yale Concert Band, Yale Philosophy Review, Intramural Sports, Roosevelt Institute, Berkeley College Orchestra, Tutor in New Haven Public Schools, Debate Coach at Walt Whitman High School

Interests: Music, skiing, travel, international affairs, law

Favorite Place to Eat: Prime 16 and Thai Taste



Aala Mohamed (ES '14)

Email: aala.mohamed@yale.edu

World Fellow: Marcelo Furtado

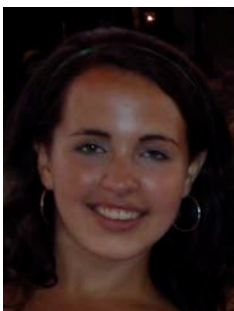
Hometown: Chicago, IL

Major: Molecular, Cellular, and Developmental Biology

Activities and Organizations: JAM, ESCC, AAP, AYA (Association of Yale Alumni), Yale Black Women's Coalition, YSSP (Yale Sight Savers Program)

Interests: Traveling, penguins, Panama City Beach, cancer research, political activism, poetry, interfaith/outreach, reading, classics, fashion design, drawing, painting, photography, global affairs, language, Sudanese culture&jokes,

Favorite Place to Eat: Bangkok Garden



Ruthie Montiel (TC '13)

Email: ruth.montiel@yale.edu

World Fellow: Xolani Zitha

Hometown: Williamstown, Massachusetts

Major: Political science

Activities & Organizations: WYSE (Women and Youth Supporting Each Other, mentoring organization for 8th grade girls), Globalist blogging

Interests: Human rights, traveling, criminal justice, education, French, Spanish

Favorite places to eat: Zaroka, York Street Noodle House



Christopher Murray (BR '13)

Email: christopher.murray@yale.edu

World Fellow: Fabio Scano

Hometown: Hinsdale, Illinois

Major: Political Science and Global Affairs

Activities & Organizations: Mixed Company of Yale (a cappella group), Yale Alpine Ski Team, Yale Club Tennis Team, Yale German Community, No Closed Doors

Interests: Guitar, singing, travel, running, skiing, tennis, soccer, foreign languages, international politics

Favorite Place to Eat: Caseus



Jason Toups (TD '14)

Email: jason.toups@yale.edu

World Fellow: Orit Marom-Albeck

Hometown: Palos Verdes, California; A coastal suburb of Los Angeles

Major: Economics

Activities and Organizations: The Yale Globalist, Yale International Relations Association and Yale Political Union. I have also been known to dabble in a variety of intramural sports.

Interests: I enjoy traveling, hiking, skiing, swimming, reading, and meeting new people. If an activity involves any of those, I am bound to enjoy it.

Favorite Place to Eat: Thai Taste



Anne van Bruggen (SY '14)

Email: anne.vanbruggen@yale.edu

World Fellow: Sonali Kochhar

Hometown: Ijsselstein, The Netherlands

Majors: Political Science and Philosophy

Activities and Organizations: ISO, YEU, YIRA, Globalist, Club Field Hockey, Cycling, Buddhist Fellowship at Yale, Fortuneoff Holocaust Archives, Philosophy research assistant

Interests: conflict resolution, immigration/integration, rise of right wing parties in Europe, social exclusion

Favorite place to eat: Claire's!



Rachel Wilf (TD '12)

Email: rachel.wilf@yale.edu

World Fellow: Ibrahim Suffian

Hometown: Greenwich, Connecticut

Major: History

Activities & Organizations: Yale Glee Club, Splatter (working with lower school students in creative writing)

Interests: Cooking, traveling, singing.

Favorite Place to Eat: Caseus Fromagerie & Bistro



Eric Willett (TC'14)

Email: eric.willett@yale.edu

World Fellow: Xolani Zitha

Hometown: Vero Beach, Florida

Major: Economics and Mathematics

Activities & Organizations: Yale International Relations Association, Yale Daily News, Instrumental Connections

Interests: International aid and development, music performance, running

Favorite Place to Eat: Miya's Late Night